

Temple Bar *Auctions*

POSTAL SALE 133

Closing date for bids Friday 2nd February 2024



373



374



Temple Bar Auctions

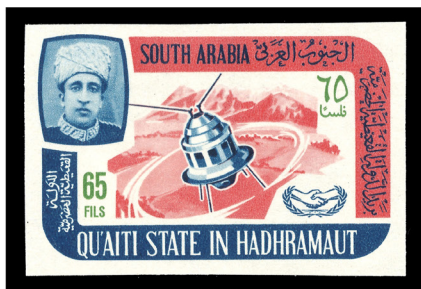
PO Box 1600, Wrington, Bristol BS40 5BD, England

Telephone: 01934 863656 (+44 1934 863656)

Email: BridgerKay@aol.com



Member of The Philatelic Traders Society



Ex 9



19



28



46



76



45



20



57



133



47



82



194



131



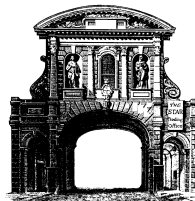
170

Temple Bar Auctions

Tel. 01934 863656 (+44 1934 863656)

Email: BridgerKay@aol.com www.bridgerkay.com VAT no. GB 567 7211 22

Please bid on my behalf on the lots listed below, up to the amounts indicated. I have read the conditions of sale and agree to abide by them.

[illegible]**Please tick method of payment**

☐ I authorise you to charge my Visa ☐ MasterCard ☐ Amex ☐

**Card
Number**

[illegible]**Expiry Date**

--	--	--	--

CVV2

--	--	--	--

(Security no.)

Signature

☐ I AM an established Temple Bar Auction customer and will pay by the following on receipt of the lots and the invoice.

☐ I AM NOT an established Temple Bar Auction customer and will pay by the following on receipt of your pro-forma invoice.

Cheque ☐ **Bank Transfer** ☐ **Bank draft** ☐

(For further details of payment see overleaf).

CONDITIONS OF SALE

TERMS & CONDITIONS - The Philatelic Auctioneers Standard Terms and Conditions of sale apply, a copy of which is available on request. Placing a bid is your acceptance of these terms. Your statutory rights are not affected.

HOW TO BID - This is a **POSTAL AUCTION** and operates in the same way as any Public Auction except you do not need to attend our premises to take part. Simply enter on the Postal Bidding Form overleaf the maximum amounts you are prepared to pay for as many of the lots you wish to bid on and return it to us in the enclosed pre-paid envelope. **PLEASE REMEMBER TO SIGN THE BID FORM.** We will enter these bids on your behalf and buy at the lowest possible price subject to other bids received and reserves. For example:

On a lot estimated at £100 three bids are received. Buyer "A" bids £80; Buyer "B" £100 and buyer "C" £130. Buyer "C" is successful because his bid is the highest received **but he only pays £110** being one bidding step above the underbidder "B".

Alternatively on a lot estimated £250 only one bid is received from Buyer "A" who bids £275. He is successful because his is the only bid received however, **he only pays £220** because the lot is reserved at this price.

Where bids are received which are equal the first one received will be the successful buyer. For example on a lot estimated £80 three bids are received. Buyer "A" bids £95; Buyer "B" £95 and Buyer "C" £95. Buyer "A" is successful at £95 because his was the first bid received.

Bids can also be made by Telephone, Fax or Email but must be confirmed in writing. **BIDS ARE CONFIDENTIAL** and will not be disclosed to third parties under any circumstances.

BIDDING STEPS - Bids will be increased by the following steps:

up to £20	in £1 steps
£20-£50	in £2 steps
£50-£100	in £5 steps
£100-£250	in £10 steps
£250-£500	in £25 steps
£500 and over	in £50 steps

RESERVES - Are usually 80%-90% of the estimates.

REFUNDS - All lots (except literature) can be returned and are offered on a "**NO QUIBBLE, FULLY REFUNDABLE**" basis provided they are returned within 48 hours of receipt and in the same condition as when they were received.

PAYMENT - Payment is due immediately upon receipt of our invoice. We are contracted to pay our vendors after 30 days and amounts outstanding after this time are subject to interest at the rate of 10% per month. We accept payment by the following Credit and Charge cards at **NO EXTRA COST** to the buyer: Visa

MasterCard

American Express

Cheque payable to **Bridger & Kay Limited** or **Temple Bar Auctions**; Bank Transfer (National Westminster Bank, 45/49 Broadmead, Bristol, BS1 3EU - a/c 00603317, sorting code 52-10-03), BIC NWBK GB 2L, IBAN GB84 NWBK 5210 0300 6033 17; Bank Drafts (Sterling only); US Dollar Cheques (converted at current rate of exchange).

POSTAGE, PACKING & INSURANCE -

Depends on the size, weight and value of the material being sent. Charged at cost.

BUYERS PREMIUMS & HANDLING - We do not charge any.

CATALOGUE SUBSCRIPTIONS - We do not charge a subscription. Catalogues are free to regular bidders.

VENDORS - Our commission rates to Vendors are competitive with most other auction houses. We do not charge unsold or lotting fees and with **NO BUYERS PREMIUM** can obtain higher prices for vendors.

*Please contact **STEVE ELLIS** to discuss any material you have for sale.*

ADEN

Lot	Description	Est.
1	1937 KGV I "Dhow" short set to 8a in u/m never hinged DE LA RUE imprint blocks of four. SG 1-8.	£275
2	1948 KGV I ½a bluish green in an u/m never hinged WATERLOW & SONS Imprint block of six. SG 16a.	£30
3	1949 KGV I Silver Wedding 10r mauve in an u/m never hinged lower marginal BRADBURY WILKINSON imprint block of four. SG 31.	£140
4	1953-63 QEII 25c "Mosque" in two of the three listed shades, deep rose-red and rose-red, both u/m never hinged blocks of four. SG 55,55a.	£80
5	1953-62 QEII 1s25 in the two listed shades, blue & black and dull blue & black, both copies u/m never hinged. SG 64,64a.	£30

ADEN - KATHIRI STATE OF SEIYUN

Lot	Description	Est.
6	1946 KGV I Victory set of two very fine mint perforated SPECIMEN. Samuel Type D21. SG 12s-13s.	£120
7	1951 5s on 5r brown & green in an u/m never hinged SE corner DE LA RUE Imprint strip of five. SG 27.	£150

ADEN - QU'AITI STATE OF SHIHR & MUKALLA

Lot	Description	Est.
8	1949 KGV I Silver Wedding 5r green in a superb u/m never hinged lower marginal BRADBURY WILKINSON Imprint block of four. SG 15.	£80
9	Qu'aiti 1966 'International Co-operation Year' complete IMPERFORATE SET of eight superb u/m never hinged. Listed in Michel as 88B-95B. SG 80-87 variety.	£30

ADEN - SOUTH ARABIAN FEDERATION

Lot	Description	Est.
10	Kathiri - 1966 Surcharge set of thirteen in superb u/m never hinged blocks of four. SG 55-67.	£140
11	Kathiri - 1967 World Peace set complete in blocks of four superb mint never hinged. SG 99-107.	£120
12	Kathiri - 1967 American Astronauts set of six in superb u/m never hinged blocks of four. SG 117-122.	£120

ANTIGUA

Lot	Description	Est.
13	1887 QV 2½d ultramarine. An u/m never hinged copy showing the TOP LEFT TRIANGLE DETACHED variety. Row 2/3 right pane. SG 27b.	£325

PLEASE POST YOUR BIDS EARLY - ON A TIED BID THE FIRST ONE RECEIVED WILL WIN.
--

ANTIGUA

Lot	Description	Est.
14	1889 QV 4d chestnut. A very fine used horizontal pair with the left-hand copy showing the TOP LEFT TRIANGLE DETACHED variety. Row 3/3 Plate 2 right pane. SG 28,28a.	£280
15	1913 KGV 5s grey-green & violet very fine mint overprinted SPECIMEN. Samuel Type D12a. SG 51s.	£75
16	1935 KGV Silver Jubilee 1d deep blue & carmine. A very fine mint example showing the DIAGONAL LINE BY TURRET variety. Row 10/1 & 10/2 Plate 2A. SG 91f.	£65
17	1935 KGV Silver Jubilee 2½d brown & deep blue. A very fine mint copy showing the DOT TO LEFT OF CHAPEL variety. Row 8/3 Plate 2B. SG 93g.	£170
18	1935 KGV Silver Jubilee 1s slate & purple. A very fine mint copy showing the DOT BY FLAGSTAFF variety. Row 8/4 Plate 4. SG 94h.	£285

ASCENSION

Lot	Description	Est.
19	1922 KGV 2d black & grey. A very fine mint lightly hinged example showing the LINE THROUGH 'P' OF 'POSTAGE' variety. Row 3/6. SG 4a.	£375
20	1924-33 KGV 1½d rose-red "Badge" issue. A very fine mint very lightly hinged (barely a trace) horizontal pair with the right-hand copy showing the LINE THROUGH "C" variety. Row 1/6. SG 12,12e.	£170
21	1924-33 KGV 1½d rose-red "Badge" issue. A very fine mint copy showing the Row 4/6 TORN FLAG variety. SG 12b.	£135
22	1924-33 KGV 3s grey-black & black/blue "Badge" issue. A very fine mint copy showing the Row 2/1 BROKEN MAINMAST variety. SG 20a.	£675
23	1946 KGVI 1½d black & carmine Perf 14. An u/m never hinged left-hand marginal part sheet of twenty showing the Row 3/1 'CUT MAST AND RAILINGS' variety as well as the Row 5/1 'DAVIT' FLAW variety. A scarce piece! SG 40e,40ea,40eb.	£825
24	1938-53 KGVI 1½d black & carmine Perf 13 in a superb u/m never hinged NW corner block of fifteen (3x5). Row 3/1 shows the CUT MAST & RAILINGS variety and Row 5/1 shows the DAVIT FLAW variety. SG 40f,40fa,40fb.	£250
25	1938-53 KGVI 2d black & red-orange perf 14. A magnificent u/m never hinged half sheet of thirty with one copy showing the MOUNTAINEER FLAW. Row 4/4. SG 41b,41ba.	£325
26	1938-53 KGVI 2d black & scarlet. A very fine mint copy showing the MOUNTAINEER FLAW variety. Row 4/4. SG 41ca.	£135
27	1944 KGVI 2s6d black & deep carmine perf 13. A very fine mint copy showing the DAVIT FLAW variety. Row 5/1. SG 45ca.	£700
28	1963 QEII 1½d black, cobalt & ochre "Black Noddy". An u/m never hinged copy showing the error COBALT OMITTED variety. Comes with normal for comparison. SG 71,71a.	£110

ALL LOTS ARE OFFERED ON A 'NO QUIBBLE, FULLY REFUNDABLE BASIS.'

AUSTRALIA

Lot	Description	Est.
29	1916 'Roo' 1s blue-green Watermark 6 Perf 12 (Die II) in a superb u/m never hinged horizontal strip of four. SG 40.	£250
30	1934 3d blue 'Centenary of Victoria' in a very fine mint SW corner block of four. The lower two copies both show the FLAG ON TOWER variety. Lightly hinged on top pair only, lower pair u/m never hinged. Couple of light bends in margin only. Row 5/6-10 left-hand pane. SG 148,148aa.	£110
31	1942-50 KGV 2d bright purple. A very fine mint coil strip of four with coil join on centre pair. Lightly mounted on top stamp only. SG 205b x2.	£100
32	1981-83 Wildlife "Tasmanian Tiger" 24c multicoloured. An u/m never hinged copy showing DEEP OLIVE ALMOST TOTALLY OMITTED with normal for comparison. Only 40 or 50 copies exist. Pierron AU1576MCA. SG 788 var.	£450

AUSTRALIA - SOUTH AUSTRALIA

Lot	Description	Est.
33	1894-1906 QV set of five De La Rue COLOUR TRIALS of the 5d (SG Type 23 design) imperforate printed on gummed unwatermarked paper in various colours.	£150
34	1883-99 QV ½d green in an u/m never hinged upper marginal IMPERF COLOUR TRIAL block of six. SG 182 var.	£80

AUSTRALIA / B.C.O.F. (JAPAN)

Lot	Description	Est.
35	1946-48 KGV 1s grey-green. A very fine mint SW corner "JOHN ASH" imprint block of eight with the top right copy showing the WRONG FOUNT "6" variety. Row 9/4 left pane. SG J5,J5a.	£350

BAHAMAS

Lot	Description	Est.
36	1906-11 KEVII 2½d ultramarine. A very fine mint example with INVERTED WATERMARK. BPA Certificate (1989). SG 73w.	£125
37	1911-19 "Queens Staircase" 3s black & green. A very fine mint copy showing the WATERMARK INVERTED & REVERSED. SG 80y.	£125
38	1918 KGV War Tax 1d carmine. A very fine mint example showing the WATERMARK SIDEWAYS. BPA Certificate (1998). Scarce. SG 97a.	£150
39	1919 1d grey-black & deep carmine-red in a fine mint lower marginal block of four showing the WATERMARK INVERTED. SG 101w.	£240
40	1937 KGV 3d purple/orange-yellow in an u/m never hinged NE corner Plate 2 block of four with Sheet Number "131" in top margin. Lightly hinged in the margin only. SG 120a.	£80
41	1935 KGV Silver Jubilee 1½d deep blue & carmine. A very fine mint copy showing the DOT BY FLAGSTAFF variety. Row 8/4 Plate 4. SG 141h.	£100

BAHAMAS

Lot	Description	Est.
42	1935 KGV Silver Jubilee 2½d brown & deep blue. A very fine mint copy showing the DOT TO LEFT OF CHAPEL variety. Scarce on this value. Row 8/3 Plate 2B. SG 142g.	£280
43	1935 KGV Silver Jubilee 1s slate & purple. A very fine used copy showing the DOT BY FLAGSTAFF variety. Row 8/4 Plate 4. SG 144h.	£300
44	1942 KGVI '450th Anniversary Landing of Columbus' complete set of fourteen in u/m never hinged blocks of four (except for the £1 value which has one copy very lightly hinged, rest u/m never hinged). SG 162-175a.	£250
45	1942 KGVI ½d bluish green 'Landfall of Columbus'. A very fine mint copy clearly showing the OVERPRINT DOUBLE variety. BPA Certificate (2021). A rare KGVI variety. SG 162b.	£1,500
46	1943 KGVI 6d olive-green & light blue '450th Anniversary of Columbus' issue. A very fine used horizontal pair with the right-hand copy showing the "COLUMBUS" variety. Row 5/2. SG 169,169a.	£1,100
47	1942 '450th Anniversary of Landing of Columbus' 3s slate-purple & myrtle-green. A very fine mint lightly hinged copy showing STOP AFTER 'COLUMBUS' variety. Row 2/12. KGVI Certificate (2013). SG 173b.	£1,300
48	1942 KGVI £1 deep grey-green & black in very fine used block of four on piece and cancelled on FIRST DAY OF ISSUE with a clear 'Nassau' postmark dated 12 OCT '42. SG 175.	£450
49	1954-63 QEII 4d "Water Sports" in the two listed shades, turquoise-green & deep reddish purple and turquoise-blue & deep reddish purple, both shades in u/m never hinged Plate 1 or Plate 1a blocks of four. SG 206,206a.	£115
50	1980 "Mace" 10c multicoloured in a superb u/m never hinged NW corner Cylinder 1C block of four showing the WATERMARK INVERTED. SG 560w.	£120

BAHRAIN

Lot	Description	Est.
51	1937 KGV 9p deep green Litho Printing in a superb u/m never hinged block of thirty two. SG 3.	£100
52	1953 KGVI 2r on 2s6d yellow-green. A superb unmounted mint never hinged right marginal block of four from the scarce Type II surcharge. This type was only discovered many years after the issue date. A rare block. SG 77a.	£525

BARBADOS

Lot	Description	Est.
53	1907 'Kingston Relief Fund' 1d on 2d slate-black & orange in a very fine used block of four on piece. The top right-hand copy shows the NO STOP AFTER '1d' variety. Block is cancelled with a clear crisp 'BARBADOS / R.L.O.' (Registered Letter Office) postmark dated 16 APR '07 - leaving the variety well clear - and is also tied to piece with a London receiver cds dated AP 29 '07. SG 153,153e.	£115

NOTE - THERE IS NO BUYERS PREMIUM OR HANDLING CHARGES.
--

BARBADOS

Lot	Description	Est.
54	1920 "Winged Victory" ½d black & bright yellow-green. A very fine used copy with the WATERMARK INVERTED. SG 202w.	£125
55	1920-21 "Victory" 3s black & dull orange. A very fine mint copy with the WATERMARK SIDEWAYS INVERTED & REVERSED. SG 211y.	£375
56	1935 KGV Silver Jubilee complete set of four in u/m never hinged blocks of four. SG 241-244.	£140
57	1935 KGV Silver Jubilee 1d deep blue & scarlet. A superb used copy showing the DAMAGED TURRET variety. Row 5/6 Plate 1. A scarce variety and the first used copy we have seen. SG 241j.	£280
58	1935 KGV Silver Jubilee 2½d brown & deep blue. A very fine mint copy showing the "BIRD" BY TURRET variety. Row 1/5 Plate 7. Scarce. SG 243m.	£225
59	1935 KGV Silver Jubilee 1s slate & purple. A very fine mint lightly hinged copy showing the KITE & HORIZONTAL LOG variety. Row 10/6 Plate 2B. Scarce. SG 244l.	£550
60	1938-47 "Badge of the Colony" 1d scarlet perf 13½x13 in a superb u/m never hinged left-hand marginal block of four. Scarce multiple. SG 249.	£775
61	1938-47 'Seal of Colony' 4d deep grey shade P13½x13. A very fine mint copy showing the CURVED LINE AT TOP RIGHT variety. Row 7/8. CW 11c. SG 253b.	£70
62	1947 KGVI 1d on 2d carmine perf 13½ x 13. An u/m never hinged SW corner "DE LA RUE" imprint part sheet of 30 showing two copies of the BROKEN "E" IN "PENNY" variety. Row 7/4 & 11/4. SG 264e,264ed (x2).	£275
63	1947 KGVI 1d on 2d carmine perf 13½ x 13. A fine used left-hand marginal block of eight (4x2) with the top right-hand copy showing the BROKEN "E" IN "PENNY" variety. Row 11/4. The lower left-hand copy shows WEAK LOWER LEFT FRAME variety found on Row 12/1. SG 264e, 264ed.	£200
64	1947 KGVI 1d on 2d carmine perf 13½ x 13. A very fine mint copy showing the SHORT "Y" IN "PENNY" variety. Row 6/2. SG 264ec.	£120
65	1948 KGVI Silver Wedding 5s indigo in an u/m never hinged lower marginal BRADBURY WILKINSON Imprint block of four. SG 266.	£70
66	1950 KGVI \$2.40 black in an u/m never hinged lower marginal BRADBURY WILKINSON Imprint block of four. SG 282.	£100

BASUTOLAND / LESOTHO

Lot	Description	Est.
67	1951-52 Postage Due 1d deep carmine on Chalk-surfaced paper in an u/m never hinged vertical block of twenty (2x10) with the third to last row showing the ST EDWARD'S CROWN WATERMARK ERROR. SG D1b,D1bb.	£160
68	1961 Postage Due 5c on 2d violet. A superb u/m never hinged NE corner block of six (2x3) showing the error ST. EDWARD'S CROWN WATERMARK ERROR variety. SG D8,D8b.	£285

NOTE - RESERVES ARE NORMALLY 80%-90% OF THE ESTIMATED PRICES.

BASUTOLAND / LESOTHO

Lot	Description	Est.
69	1935 KGV Silver Jubilee 2d ultramarine & grey. An u/m never hinged copy showing the DIAGONAL LINE BY TURRET variety. Row 10/1 & 10/2 Plate 2A. SG 12f.	£140
70	1935 KGV Silver Jubilee 3d brown & deep blue. A very fine mint copy showing the DOT TO LEFT OF CHAPEL variety. Row 8/3 Plate 2B. SG 13g.	£200
71	1948 KGV Silver Wedding set of two in u/m never hinged SE corner Plate blocks of four. Hinged in the margin only. SG 36-37.	£200
72	1961 QEII 2c on 2d deep bright blue & orange. An u/m never hinged right-hand marginal block of four showing the SURCHARGE INVERTED variety. A scarce multiple. SG 60a.	£925
73	1961-63 QEII 1r in the two listed shades, black & maroon and black & light maroon. Both copies u/m never hinged. SG 79,79a.	£110
74	1980 25s on 25c multicoloured 'Sehlabathebe National Park'. An u/m never hinged example showing the error SURCHARGE DOUBLE variety. Comes with normal for comparison. Ex Stanley Gibbons and comes on original Gibbons 'The Gilt Edged Collection' sales page. SG 412a.	£10

BATUM

Lot	Description	Est.
75	1919 10k bright blue. A very fine used block of four centrally cancelled by a very fine '6 3.20' cds showing four of the six transfer types. Ex Stanley Gibbons. SG 12.	£75
76	1919 15r on 1k orange with Type 5 surcharge in black. A mint very lightly hinged example showing "IT" OF "BRITISH" OMITTED due to having failed to print. Signed Houtzamer on reverse. Only 1200 issued as a basic stamp. A most unusual example! SG 20 var.	£90

BECHUANALAND / BOTSWANA

Lot	Description	Est.
77	1935 KGV Silver Jubilee complete set in superb u/m never hinged blocks of four. SG 111-114.	£80
78	1947 KGV 'Royal Visit' set of four very fine mint perforated SPECIMEN. Samuel Type W9. Certified as genuine. SG 132s-135s.	£120
79	1955-58 QEII 4d red-orange "Baobab Tree & Cattle" in a very fine mint lightly hinged lower marginal WATERLOW & SONS Imprint block of four. Lower pair u/m never hinged. SG 146b.	£70
80	1961 QEII 3½c on 4d red-orange from the First Setting in an u/m never hinged lower marginal WATERLOW & SONS imprint block of four. Top left copy shows the Type II surcharge with BOLD 'C' variety, the right-hand vertical pair shows Type II surcharge and the lower left-hand copy shows Type I surcharge. SG 161, 161b (x2), 161ba.	£100

BERMUDA

Lot	Description	Est.
81	1910-25 "Caravel" complete set including all listed shades all very fine mint. Fifteen stamps in total. SG 44-51a.	£145
82	1918-22 KGV 2s purple & blue/blue. A very fine used example showing WATERMARK REVERSED. Scarce. SG 51bx.	£1,875
83	1918-22 KGV 4s black & carmine. A very fine mint copy showing the DAMAGED LEAF AT BOTTOM RIGHT variety. Row 5/6 on printings from April 1918. HPF #54. SG 52bf.	£260
84	1922-34 "Caravel" 3d ultramarine. A very fine mint right-hand marginal copy showing the WATERMARK INVERTED. SG 83w.	£120
85	1924-32 KGV 2s purple & blue/grey-blue. A very fine mint example showing the GASH IN FRUIT & LEAF variety. Row 5/12 on printings from November 1928. SG 88gg.	£260
86	1924-32 KGV 2s6d black & carmine/pale blue. A very fine mint copy showing the BROKEN CROWN & SCROLL variety. Row 2/12. HPF #24. SG 89b.	£225
87	1936 KGV 10s green & red/deep emerald. A very fine used copy tied to piece by Hamilton cds dated 5 AUG '36. BPA Certificate (2006). SG 92g.	£220
88	1924-32 KGV 12s6d grey & orange from the December 1935 printing. An u/m never hinged upper marginal positional block of four showing pyramid guide in top margin. Excellent centering and fresh appearance. Lightly hinged in margin only. SG 93.	£950
89	1935 KGV Silver Jubilee 1d deep blue & scarlet. A very fine mint copy showing the BIRD BY TURRET variety. Row 1/5 Plate 7. SG 94m.	£150
90	1938-53 KGVI complete set of sixteen mint lightly hinged perforated SPECIMEN. Samuel Types B9, D20. Some values including the £1 are u/m never hinged. SG 110s-121s.	£1,600
91	1938-53 KGVI 2s purple & blue/deep blue. An u/m never hinged SE corner copy showing the BROKEN LOWER RIGHT SCROLL variety. Row 5/12 on printings between May '41 & March '43. SG 116ce.	£170
92	1938-53 KGVI 2s6d black & red/grey-blue. A superb u/m never hinged upper marginal block of four from Positions 4,5,16,17 on the sheet. BPA Certificate (1985). SG 117.	£210
93	1941 KGVI 5s dull yellow-green & red/yellow perf 14¼ line. A very fine mint SE corner Plate 1 block of four with the lower pair showing the Row 5/11 BROKEN TOP RIGHT SCROLL variety and Row 5/12 BROKEN LOWER RIGHT SCROLL variety. The latter found on printings between May 1941 and March 1943. Very lightly hinged on top pair only, varieties u/m never hinged. A rare multiple. HPF #59i, HPF #60. SG 118b x2, 118bd, 118be cat £3200.	£2,250
94	1939 KGVI 10s bluish green & deep red/green in a superb u/m never hinged NE corner block of four. SG 119a.	£600
95	1950 KGVI 12s6d grey & pale orange Perf 13 on chalk-surfaced paper in an u/m never hinged SE corner Plate 1 block of four. SG 120e.	£350

ALL LOTS ARE OFFERED ON A 'NO QUIBBLE, FULLY REFUNDABLE BASIS.'

BERMUDA

Lot	Description	Est.
96	1953-62 QEII 1½d green in an u/m never hinged SE corner Plate 1 and Plate 1a block of four. SG 137.	£10
97	1953-62 QEII 3d in two contrasting shades, deep purple Die II (listed) and bright purple Die II (unlisted), both shades in an u/m never hinged SE corner BRADBURY WILKINSON Imprint Plate 1 blocks of eight. SG 140a, 140a var.	£20
98	1953-62 QEII 1s3d (Die II) "Sandys" printing in the two listed shades, blue and bright blue, both in u/m never hinged SE corner BRADBURY WILKINSON Imprint Plate 1 & 1a blocks of eight. SG 145b, 145bc.	£225
99	1953-62 QEII 2s6d in two shades, scarlet (listed) and dull scarlet (unlisted), both u/m never hinged lower marginal BRADBURY WILKINSON Imprint blocks of four. SG 147, 147 var.	£80
100	1970 QEII 24c on 2s red-brown & orange. A superb u/m never hinged copy showing the WATERMARK CROWN TO RIGHT OF 'CA' variety. SG 243w.	£125

BRITISH ANTARCTIC TERRITORY

Lot	Description	Est.
101	1971 QEII "RRS Shackleton" 50p on 10s deep ultramarine & emerald. An u/m never hinged right-hand marginal copy showing the WATERMARK INVERTED. SG 37w.	£110
102	1980 QEII 22p multicoloured 'Sir James Wordie'. A superb u/m never hinged copy showing the WATERMARK CROWN TO RIGHT OF 'CA'. SG 97w.	£80

BRITISH GUIANA / GUYANA

Lot	Description	Est.
103	1935 KGV Silver Jubilee 6c brown & deep blue. A very fine mint copy showing the DOT BY FLAGSTAFF variety. Row 8/4 Plate 4. SG 302h.	£135
104	1935 KGV Silver Jubilee 24c slate & purple. A very fine mint copy showing the DOT BY FLAGSTAFF variety. Row 8/4 Plate 4. SG 304h.	£260
105	1946 KGV Victory set of two very fine mint perforated SPECIMEN. Samuel Type D21. SG 320s-321s.	£80
106	1948 KGV Silver Wedding set in superb u/m never hinged NE corner blocks of four. SG 322-323.	£76
107	1954-63 QEII "Amerindian shooting fish" 4c deep violet De La Rue printing in an u/m never hinged SE corner Plate 4 block of four. SG 334ab.	£140
108	1954-63 QEII 12c "Felling Greenheart" in the three listed shades, black & reddish brown (Waterlow Printing), black & light brown (Waterlow Printing) and black & brown (De La Rue Printing), all three in u/m never hinged blocks of four. SG 338,338a,338b.	£140

BRITISH HONDURAS / BELIZE

Lot	Description	Est.
109	1888 QV 'TWO' on 50c grey in a very fine mint block of four. Hinged on the top pair only, lower pair u/m never hinged. SG 35.	£200
110	1888-91 QV 50c on 1s grey in a very fine mint block of four. Hinged on the top pair only, lower pair u/m never hinged. SG 42.	£125
111	1899 QV 25c red-brown & green. A very fine mint example showing the Row 6/4 "BEVENUE" variety. SG 68a.	£130
112	1904-07 KEVII 25c dull purple & orange. A very fine mint copy overprinted SPECIMEN and showing the BROKEN "M" IN "SPECIMEN" variety. Samuel Type D12, this variety listed in his book (p43). Position 41 in the setting. Only six or seven copies can exist. SG 89s.	£150
113	1913-21 KGV 1c blue-green. A very fine mint lightly hinged copy showing the WATERMARK INVERTED. SG 101w.	£205
114	1961 QEII 5c deep olive-green & scarlet Perf 14 in an u/m never hinged SE corner DE LA RUE Imprint Plate 1 block of six. SG 183ab.	£110

BRITISH LEVANT

Lot	Description	Est.
115	1921 KGV 2s6d chocolate-brown "Seahorses" from the Bradbury Wilkinson printing. A very fine mint copy showing the MAJOR RE-ENTRY TO SHIELD variety. Row 1/3 Plate 2/4R. Listed in GB Specialised catalogue as N650. SG L24 var.	£175
116	1909 KEVII complete set of three very fine mint overprinted SPECIMEN. Samuel Type GB17. SG 9s-11s.	£130
117	1909 KEVII 5pi on 1s dull green & carmine. A very fine mint copy overprinted SPECIMEN. Samuel Type GB17. SG 21s.	£65

BRITISH OCCUPATION OF ITALIAN COLONIES

Lot	Description	Est.
118	1948 KGVI 2s50c on 2s6d yellow-green in an u/m never hinged SE corner block of four with the top left copy showing the Row 4/7 MISPLACED STOP variety. SG E10, E10a.	£160
119	1950 Postage Due 'B A ERITREA' 1s on 1s deep blue Postage Due. A very fine mint example showing the NO STOP AFTER "A" variety. Row 2/13 and scarce on this value. SG ED10a.	£450
120	1948 Postage Due 'BMA ERITREA' 20c on 2d agate in an u/m never hinged top marginal strip of four with the second stamp showing the NO STOP AFTER "A" variety and the third stamp showing the NO STOP AFTER "B" variety. SG ED3, ED3a, ED3b.	£250
121	1950 Postage Due 'B A ERITREA' 5c on ½d emerald in an u/m never hinged SW corner Control G40 block of six. Lower margin imperforate. SG ED6.	£120

NOTE - THERE IS NO BUYERS PREMIUM OR HANDLING CHARGES.
--

BRITISH OCCUPATION OF ITALIAN COLONIES

Lot	Description	Est.
122	1942 KGVI MEF 1d scarlet in a very fine mint block of four with the top right-hand copy (hinged) showing the Row 6/10 SLICED "M" variety. SG M1,M1a.	£110
123	1943-47 MEF KGVI 5s red. A very fine mint example showing the "T" GUIDE MARK IN KING'S HAIR variety. Commonwealth catalogue CW 20a. SG M20 var.	£75
124	1942 KGVI MEF 5d brown in an u/m never hinged block of four with the lower right copy showing the Row 6/10 SLICED "M" variety. SG M5, M5a.	£120
125	1942 KGVI MEF 1d scarlet in a very fine mint block of four showing the ROUND & SQUARE STOPS SE-TENANT (two vertical pairs). Hinged on one stamp at top only. Scarce. SG M6b x2.	£300
126	1942 KGVI MEF 2d orange. A very fine mint lightly hinged block of nine with all copies showing the overprint Type M2a ROUND STOPS variety. The block is from vertical rows 1,2,3 and from horizontal rows 4,5,6. Stamp position # 19,20,21 / 25,26,27 / 31,32,33. Lightly hinged on the centre stamps in top and lower rows only, rest u/m never hinged. A scarce block. SG M7a.	£500
127	1942 KGVI MEF 2½d ultramarine. A very fine mint vertical pair of the round stops overprint, the lower copy showing the SMALL STOP AFTER "F" variety. Stamp # 59 of the setting. SG M8a, M8a var.	£70
128	1942 Postage Due 'MEF' 1d carmine from the scarce aniline ink printing in a very fine mint lightly hinged SW corner Control K42 block of four. Perforated through lower margin. Two stamps u/m never hinged. SG MD2 var.	£150
129	1948 KGVI BMA Somalia 2s50c on 2s6d yellow-green. A very fine mint copy showing the Row 4/7 MISPLACED STOP variety. SG S19a.	£95
130	1948 KGVI BMA Tripolitania 24l on 1s bistre-brown in an u/m never hinged right-hand marginal block of four with the lower right-hand copy showing BROKEN BARB ON ROSE variety. Row 7/12 Control S46 Cylinder 16 dot. CW 10a. SG T10, T10 var.	£120
131	1948 KGVI BMA Tripolitania 120l on 5s red. An u/m never hinged copy showing the "T" GUIDE MARK IN KING'S HAIR variety. Listed in the Commonwealth catalogue as CW 12a. SG T12 var.	£90
132	1950 KGVI BA Tripolitania 3l on 1½d pale red-brown. A very fine mint example showing the MISALIGNED SURCHARGE variety. Row 8/8 & 18/8. Comes with normal for comparison. Scarce on this issue. SG T16,T16a.	£105
133	1950 KGVI BA Tripolitania 4l on 2d pale orange. A very fine mint copy showing the MISALIGNED SURCHARGE variety. Row 8/8 & 18/8. Comes with normal for comparison. Scarce on this issue. SG T17,T17a.	£115
134	1950 Postage Due 'B A Tripolitania' 24l on 1s deep blue Postage Due in an u/m never hinged SW corner block of four with the top right-hand copy showing the NO STOP AFTER "A" variety. Row 11/2. Lightly hinged in the margin only. BPA Certificate (2003). SG TD10,TD10a.	£650

NOTE - RESERVES ARE NORMALLY 80%-90% OF THE ESTIMATED PRICES.

BRITISH OCCUPATION OF ITALIAN COLONIES

Lot	Description	Est.
135	1950 Postage Due 'B A Tripolitania' 4l on 2d agate in a very fine mint lower marginal block of four with the top left-hand copy showing the NO STOP AFTER "B" variety. Row 11/10. Lightly hinged on top pair. SG TD8,TD8a.	£95
136	1950 Postage Due 'B A Tripolitania' 6l on 3d violet in a very fine mint lower marginal block of four with the top left-hand copy showing the NO STOP AFTER "B" variety. Row 11/10. Lightly hinged on top pair. SG TD9,TD9a.	£170
137	1950 Cyrenaica "Horseman" set up to 50m all in u/m never hinged blocks of four. SG 136-145.	£150

BRITISH VIRGIN ISLANDS

Lot	Description	Est.
138	1935 KGV Silver Jubilee 1d deep blue & scarlet. An u/m never hinged copy showing the KITE & VERTICAL LOG variety. Row 10/6 Plate 2A. SG 103k.	£130
139	1935 KGV Silver Jubilee 1d deep blue & scarlet. A very fine mint copy showing the KITE & HORIZONTAL LOG variety. Row 10/6 Plate 2B. SG 103l.	£120
140	1935 KGV Silver Jubilee 1½d ultramarine & grey. A very fine mint copy showing the "BIRD" BY TURRET variety. Row 1/5 Plate 7. SG 104m.	£150
141	1935 KGV Silver Jubilee 2½d brown & deep blue. An u/m never hinged copy showing the KITE & HORIZONTAL LOG variety. Row 10/6 Plate 2B. SG 105l.	£170
142	1935 KGV Silver Jubilee 1s slate & purple. A very fine mint copy showing the KITE & VERTICAL LOG variety. Row 10/6 Plate 2A. SG 106k.	£325
143	1937 KGVI Coronation set of three very fine mint perforated SPECIMEN. Samuel Type B9. Certified as genuine. SG 107s-109s.	£85

BRUNEI

Lot	Description	Est.
144	1907-10 "View on Brunei River" 5c grey-black & blue. A very fine mint copy showing the WATERMARK REVERSED. Scarce. SG 27x.	£90
145	1922 Malaya-Borneo Exhibition 10c purple/yellow. A very fine used copy showing the BROKEN "E" variety. From vertical Rows 4 & 10. SG 56b.	£65
146	1950-51 "View on Brunei River" 5c orange perf 14½x13½ in an u/m never hinged NE corner block of six with the top left copy showing the "5c" RETOUCH variety. Row 1/8. SG 82b,82c.	£110
147	1972-74 "Sultan Omar Ali Saifuddin" complete set of eight (Wmk W12) in superb u/m never hinged lower marginal DE LA RUE imprint strips of four. SG 202-209.	£70
148	1972-74 "Sultan Omar Ali Saifuddin" complete set of eight (Wmk W12) in u/m never hinged SE corner Frame Plate 1 or 2 Vignette Plate 3 blocks of four. SG 202-209.	£80

BURMA - JAPANESE OCCUPATION

Lot	Description	Est.
149	1943 KGVI 1c orange "Farmer" issue in an u/m never hinged vertical IMPERF PROOF PAIR. No gum as issued. Scarce. SG J73 var.	£80
150	1943 KGVI 2c yellow-green "Farmer" issue in an u/m never hinged vertical IMPERF PROOF PAIR. No gum as issued. Scarce. SG J74 var.	£80
151	1943 KGVI 3c dull blue-green (unlisted shade) "Farmer" issue in an u/m never hinged vertical IMPERF PROOF PAIR. No gum as issued. Scarce. SG J75 var.	£80
152	1943 KGVI 5c dull vermilion (unlisted shade) "Farmer" issue in an u/m never hinged vertical IMPERF PROOF PAIR. No gum as issued. Lower copy shows NO STOP AFTER "5" variety. Scarce. SG J77 var.	£80
153	1943 KGVI 10c grey-brown "Farmer" issue in an u/m never hinged vertical IMPERF PROOF PAIR. No gum as issued. Lower copy shows NO STOP AFTER "10" variety. Scarce. SG J78 var.	£80
154	1943 KGVI 15c magenta "Farmer" issue in an u/m never hinged vertical IMPERF PROOF PAIR. No gum as issued. Scarce. SG J79 var.	£80
155	1943 KGVI 20c grey-lilac "Farmer" issue in an u/m never hinged vertical IMPERF PROOF PAIR. No gum as issued. Scarce. SG J80 var.	£80
156	1943 KGVI 30c deep green (unlisted shade) "Farmer" issue in an u/m never hinged vertical IMPERF PROOF PAIR. No gum as issued. Scarce. SG J81 var.	£80

BURMA / MYANMAR

Lot	Description	Est.
157	1946 KGVI Telegraph Stamps complete set of seven in u/m never hinged blocks of four. SG T1-T7.	£200
158	1938-40 KGVI complete set of sixteen in superb u/m never hinged blocks of four. SG 18b-33.	£750
159	1938-40 KGVI 3a6p light blue & blue. A very fine used copy showing the Row 11/8 EXTRA TREES variety. SG 27a.	£150
160	1945 KGVI British Military Administration 2a6p claret in an u/m never hinged block of twenty-one with the lower centre copy showing the Row 15/3 BIRDS OVER TREES variety. SG 42,42a.	£100

CAMEROON

Lot	Description	Est.
161	1915 1d on 10pf carmine (blue surcharge). An u/m never hinged SW corner block of four showing the SURCHARGE DOUBLE, ONE ALBINO variety. SG B3ba.	£575
162	1960-61 "Tin" 2d (Type B) overprinted "CAMEROONS U.K.T.T." in the three listed shades, grey, bluish grey and pale grey, all u/m never hinged copies. SG T4,T4b,T4c.	£75

ALL LOTS ARE OFFERED ON A 'NO QUIBBLE, FULLY REFUNDABLE BASIS.'

CANADA

Lot	Description	Est.
163	1949 Official 1c green overprinted 'O.H.M.S.' in an u/m never hinged SW corner 'CANADIAN BANK NOTE CO.' Imprint Plate 2 pair. The right-hand copy shows MISSING STOP AFTER 'S' variety. SG O166,O166a.	£155
164	1949 Official 14c sepia overprinted 'O.H.M.S.' in an u/m never hinged NW corner 'CANADIAN BANK NOTE CO.' Imprint Plate 1 block of four. SG O167.	£65
165	1949 Official 20c slate overprinted 'O.H.M.S.' in an u/m never hinged SW corner 'CANADIAN BANK NOTE CO.' Imprint Plate 1 block of four. The lower right-hand copy shows the MISSING STOP AFTER 'S' variety. SG O168,O168a.	£220
166	1949 "Tree Felling" 50c green Official in a very fine mint SW corner "CANADIAN BANK" Imprint block of four. The lower right copy shows MISSING STOP AFTER "S" variety. Row 10/2 lower pane. Hinged on top left copy only, variety u/m never hinged. SG O169,O169a.	£1,400
167	1949 Official 7c blue overprinted 'O.H.M.S.' in an u/m never hinged SE corner 'CANADIAN BANK NOTE CO.' Imprint Plate 2 block of four. SG O171.	£65
168	1950 Official 20c slate overprinted 'G' in an u/m never hinged SW corner 'CANADIAN BANK NOTE CO.' Imprint Plate 2 block of four. SG O187.	£170
169	1950 Official 7c blue overprinted 'G' in an u/m never hinged NW corner 'CANADIAN BANK NOTE CO.' Imprint Plate 2 block of four. SG O190.	£65
170	1950-51 "Drying Furs" 10c brown-purple Official in a superb u/m never hinged left marginal pair with the left copy showing the Row 7/1 OVERPRINT OMITTED variety. This only occurred on a small number of sheets. KGV Certificate (2003). SG O191,O191a.	£750
171	1935 KGV "Silver Jubilee" 1c green in a very fine mint block of four with the top left-hand copy showing the "WEeping PRINCESS" variety. Row 3/1 Plate 1 upper right pane. SG 335,335a.	£120

CANADA - NEWFOUNDLAND

Lot	Description	Est.
172	1937 KGV Coronation 8c scarlet. A very fine mint IMPERF VERTICALLY, horizontal pair. SG 260b.	£750
173	1937 KGV Coronation 14c black. A very fine mint vertical IMPERF PLATE PROOF PAIR on ungummed, watermarked paper, in issued colour. SG 262 var.	£150
174	1937 KGV Coronation 25c slate. A very fine mint vertical IMPERF PLATE PROOF PAIR on ungummed, watermarked paper, in issued colour. SG 266 var.	£150
175	1937 KGV Coronation 48c slate-purple. A very fine mint vertical IMPERF PLATE PROOF PAIR on ungummed, watermarked paper, in issued colour. SG 267 var.	£150
176	1941-44 'Princess Elizabeth' 4c blue Perf 12½ (line) in an u/m never hinged upper marginal block of four with the WATERMARK SHOWING TOP OF SHIELD TO RIGHT variety. SG 279w.	£220

CAPE MAFEKING

Lot	Description	Est.
177	1900 1d on ½d green "Hope" seated issue. Six very fine used examples tied to individual pieces all surcharged with Gibbons Type 1 each showing the six different types of surcharge, Positions 5 & 6 both showing the NO COMMA variety. Five cancelled with a MAFEKING cds dated MR 29 1900 and one dated MR 31 1900. A difficult group to assemble! SG 1.	£425
178	1900 3d on 1d carmine "Hope" standing issue. Six very fine used examples tied to individual pieces all surcharged with Gibbons Type 1 each showing the six different types of surcharge, Positions 5 & 6 both showing the NO COMMA variety. All cancelled with a MAFEKING cds dated MR 29 1900. A difficult group to assemble! SG 3.	£350
179	1900 QV 1d on ½d vermillion. Six very fine used examples tied to individual pieces all surcharged with Gibbons Type 1 each showing the six different types of surcharge, Positions 5 & 6 both showing the NO COMMA variety. All cancelled with a MAFEKING cds dated AP 3 1900. A difficult group to assemble! SG 6.	£380

CAYMAN ISLANDS

Lot	Description	Est.
180	1917 KGV 1½d on 2½d deep blue "WAR STAMP" issue. A very fine used copy showing the NO FRACTION BAR variety. Row 9/4-5. SG 54a.	£105
181	1935 KGV Silver Jubilee ½d black & green. An u/m never hinged block of four with the lower pair both showing the DIAGONAL LINE BY TURRET variety. Row 10/1 & 10/2 Plate 2A. SG 108,108f.	£100
182	1948 KGV Silver Wedding set in superb u/m never marginal blocks of four. SG 129-130.	£72
183	1948 KGV 10s violet-blue in an u/m never hinged lower marginal BRADBURY WILKINSON imprint block of four. SG 130.	£100
184	1962-64 QEII 1s9d deep turquoise & violet in an u/m never hinged SE corner Plate 1 block of four. SG 176.	£90

CEYLON / SRI LANKA

Lot	Description	Est.
185	1935-36 KGV 1r.80 black on blue complete exploded booklet with stamps in blocks of ten. SG SB13a.	£675
186	1936 KGV 2r.70 black on green complete exploded booklet with stamps in blocks of ten. SG SB14a.	£825
187	1935 KGV Silver Jubilee 6c ultramarine & grey. An u/m never hinged example showing the DOT BY FLAGSTAFF variety. Row 8/4 Plate 4. SG 379h.	£90
188	1974 15c multicoloured 'Prime Minister Bandaranaike' in an u/m never hinged horizontal IMPERF PAIR with normal for comparison. SG 605e.	£95

COLLECTIONS

Lot	Description	Est.
189	Box containing 14 Benham small binders with commemorative covers plus a few loose stamps.	£80

COOK ISLANDS

Lot	Description	Est.
190	1893 "Queen Makea Takau" 1½d DIE PROOF in black on wove paper with large margins all around. Scarce.	£80
191	1893 "Queen Makea Takau" 10d DIE PROOF in black on wove paper with large margins all around. Scarce.	£80
192	1893 "Queen Makea Takau" 1d DIE PROOF in black on wove paper with large margins all around. Scarce.	£80
193	1900 "Torea" ½ deep blue (second setting) in an u/m never hinged SW corner block of thirty-two with sheet number printed in lower left-hand corner. SG 11ba.	£120
194	1932 "Natives working Cargo" 2½d black & deep blue in a superb u/m never hinged block of four showing CENTRE INVERTED variety. See footnote in Gibbons under SG 105. SG 102 var.	£900
195	1943-54 "Arms" £5 indigo-blue in a superb u/m never hinged right marginal block of four with WATERMARK UPRIGHT. SG 136.	£1,150
196	1971 10c on 15c multicoloured 'Frangipani'. A superb u/m never hinged copy showing the error SURCHARGE DOUBLE variety. SG 364a.	£80

CYPRUS

Lot	Description	Est.
197	1904-10 KEVII 6pi blue & purple. A very fine used copy showing the BROKEN TOP LEFT TRIANGLE variety. Row 7/5 left pane. SG 65a.	£80
198	1912-15 KGV complete Wmk Multi Crown 'CA' set of eleven very fine mint. Includes all listed shades as per Gibbons. Fifteen stamps in total. SG 74-84.	£260
199	1912-15 KGV ½pi yellow-green & carmine. A very fine used copy showing the BROKEN BOTTOM LEFT TRIANGLE variety. Row 10/6 right pane. SG 75ba.	£65
200	1912-15 KGV 1pi carmine & blue. A very fine used copy showing the BROKEN BOTTOM LEFT TRIANGLE variety. Row 10/6 right pane. SG 77ba.	£105
201	1921-23 KGV complete Wmk Multi Script 'CA' set of fifteen fine mint overprinted SPECIMEN. Samuel Types D9 & D12. SG 85s-99s.	£600
202	1944 KGVI 1pi orange perf 12½x13½ in an u/m never hinged upper marginal block of four. A scarce block in this condition. SG 154a.	£1,650
203	1960-61 QEII complete set of fifteen overprinted 'Cyprus Republic' in u/m never hinged marginal blocks of four. Some values are Plate blocks. SG 188-202.	£425
204	1960-61 QEII 15m "Troodos Forest" overprinted with Type 54 in two of the three listed shades, yellow-bistre & indigo and brownish bistre & deep indigo, both shades in u/m never hinged blocks of four. SG 192,192b.	£96

DOMINICA

Lot	Description	Est.
205	1877-79 QV 4d blue. A very fine used copy showing the MALFORMED "CE" IN "PENCE" variety. Row 10/6. SG 7a.	£95

DOMINICA

Lot	Description	Est.
206	1908-20 KGV 'Roseau from the Sea' Wmk Multi Crown 'CA' complete set of nine overprinted SPECIMEN. Samuel Type D12a. SG 48s-54s.	£180
207	1916-1920 War Tax set of six very fine mint overprinted SPECIMEN. Samuel Type D12a & DO1. SG 55s-60s.	£180
208	1935 KGV Silver Jubilee 1½d ultramarine & grey. A very fine mint copy showing the DOT BY FLAGSTAFF variety. Row 8/4 Plate 4. SG 93h.	£100
209	1935 KGV Silver Jubilee 1s slate & purple. A very fine mint copy showing the DOT BY FLAGSTAFF variety. Row 8/4 Plate 4. SG 95h.	£120
210	1951 KGVI 1c black & vermilion in a superb u/m never hinged marginal block of four, the lower right stamp showing on reverse BROKEN TOP TO "C" IN WATERMARK giving the appearance of the letter "J". Similar to the listed "JA" for "CA" variety. SG 121, 121c var.	£100
211	1951 KGVI \$1.20 emerald & black 'Fresh Water Lake'. A very fine mint copy showing the error 'C' OF 'CA' MISSING FROM WATERMARK. SG 133a.	£600
212	1954-62 QEII 2c chocolate & grey-green "Carib baskets" in an u/m never hinged SE corner BRADBURY WILKINSON Imprint Plate 1a block of eight. SG 142a.	£120
213	1954-62 QEII 10c green & brown in an u/m never hinged lower marginal BRADBURY WILKINSON Imprint Plate 1a block of ten. SG 150.	£80

FALKLAND ISLANDS

Lot	Description	Est.
214	1918-20 KGV 1d orange-vermilion (comb perf) "WAR STAMP" issue. A very fine mint copy showing the OVERPRINT DOUBLE variety. Only 58 copies recorded. Scarce. BPA Certificate (2005). SG 71ca.	£3,250
215	1935 KGV Silver Jubilee 1d deep blue & scarlet in a very fine mint left-hand marginal block of four with the lower left copy showing the FLAGSTAFF ON RIGHT-HAND TURRET variety. Row 7/1 Plate 5. One stamp hinged at top, rest including variety u/m never hinged. SG 139,139d.	£370
216	1935 KGV Silver Jubilee 2½d brown & deep blue. A very fine mint copy showing the Row 8/1 RE-ENTRY ON VALUE TABLET variety. SG 140l.	£150
217	1953 KGVI £1 intense black "Hulk of Great Britain" in a superb u/m never hinged NE corner block of four from the August 1953 second printing on white paper. Perforated through top margin. Stefan Heijtz catalogue 115b. SG 185 var.	£300
218	1962 QEII ½d black & green "Austral Thrush" from the DE LA RUE printing in a superb u/m never hinged NW corner block of six from Plate 1 showing the Row 2/2 'H' FLAW variety. SG 193a,193ac.	£80
219	1971 QEII 'Flowers' complete set of fourteen in superb used blocks of four all cancelled with "FOX BAY" cds postmarks. SG 232-245.	£136

NOTE - THERE IS NO BUYERS PREMIUM OR HANDLING CHARGES.

FALKLAND ISLANDS

Lot	Description	Est.
220	1979 QEII 'Opening of Stanley Airport' set of four all u/m never hinged. The 3p value shows the WATERMARK CROWN TO RIGHT OF 'CA', others WATERMARK CROWN TO LEFT OF 'CA'. Heijtz 284-287 Wmk 1. SG 360w-363w.	£110
221	1979 QEII 'Fokker F.27 Friendship over South Atlantic' 11p multicoloured in a superb u/m never hinged NW corner Plate 1-4 block of four showing the WATERMARK CROWN TO LEFT OF 'CA'. SG 361w.	£150

FALKLAND ISLANDS DEPENDENCIES

Lot	Description	Est.
222	1944-45 KGVI South Shetlands 6d, 8d and 1s (top three values of the set) in very fine mint lower marginal BRADBURY WILKINSON imprint blocks of four. Lightly hinged on one stamp only, rest u/m never hinged. SG D6-D8.	£75
223	1962 QEII 1½d black & yellow-olive "Wyatt Earp". A superb DE LA RUE imprint Plate 1 block of fifteen from the bottom part of the sheet. SG G28a.	£100
224	1946-49 KGVI 1d back & violet "Thick Maps". A very fine used copy showing the GAP IN 80TH PARALLEL and EXTRA ISLAND variety. Row 3/9 Plate 1. SG G2a,G2aa.	£250
225	1949 very neat cover addressed to San Carlos, Falkland Islands, bearing KGVI 2d black & carmine 'Thick Maps' (SG G3d) and ½d black & green 'Thin Maps' (SG G9) both neatly tied with a crisp Graham Land cds dated MR 22 '49. The 2d shows the EXTRA DOT BY OVAL variety. Row 4/6 Plate 1.	£280
226	1946-49 KGVI 3d back & blue "Thick Maps" in a superb u/m never hinged NE corner block of six from Plate 1. Row 1/9 and Row 3/9 both show the GAP IN 80th PARALLEL variety and Row 3/9 also shows the EXTRA ISLAND variety. SG G4, G4a, G4aa.	£175
227	1946-49 KGVI 'Thin Map' issue complete set in lower marginal DE LA RUE Imprint blocks of eight. Row 5/4 & 5/6 all show the DOT IN "T" OF "SOUTH" variety. Hinged on top pair only. SG G9-G16, G9a-G16a x2.	£750
228	SOUTH GEORGIA - 1971-76 QEII Surcharges complete set superb u/m never hinged and includes all the listed surcharges and watermark varieties as per Gibbons. Twenty-one stamps in total. SG 18-31a.	£85
229	SOUTH GEORGIA - 1971 QEII 2p on 2d turquoise-blue. An u/m never hinged copy showing the SURCHARGE MISPLACED - LINES TO RIGHT OF ORIGINAL VALUE. Comes with normal for comparison. Listed in Heijtz as SH 98v1. SG 21,21 var.	£75
230	SOUTH GEORGIA - 1972 Royal Silver Wedding 5p multicoloured. A superb u/m never hinged copy showing the WATERMARK INVERTED. Heijtz 113 Wmk 1. SG 36w.	£70
231	SOUTH GEORGIA - 1977-78 QEII 2½p on 2½d black on glazed paper in an u/m never hinged SE corner Plate 1B block of four. SG 57.	£65

NOTE - RESERVES ARE NORMALLY 80%-90% OF THE ESTIMATED PRICES.

FIJI

Lot	Description	Est.
232	1918 Postage Due set of five very fine mint overprinted SPECIMEN. Samuel Type D12. SG D6s-D10s.	£130
233	1891 2½d on 2d green in a superb u/m never hinged block of four. SG 70.	£150
234	1903 KEVII 2d dull purple & orange in an u/m never hinged upper marginal Plate 1 block of four. SG 106.	£25
235	1904-09 KEVII 1d purple & black/red Watermark Multi Crown 'CA' in a superb u/m never hinged block of four. SG 116.	£110
236	1910 KEVII 6d dull purple Watermark Multi Crown 'CA' in an u/m never hinged SW corner Plate 1 block of four. SG 121.	£150
237	1912-23 KGV 3d purple/yellow (Die I). An u/m never hinged copy showing the WATERMARK SIDEWAYS. Scarce in this condition. SG 130a.	£385
238	1935 KGV Silver Jubilee 1½d deep blue & carmine. A very fine mint copy showing the DIAGONAL LINE BY TURRET variety. Row 10/1 & 10/2 Plate 2A. SG 242f.	£110
239	1935 KGV Silver Jubilee 1s slate & purple. A very fine mint copy showing the DIAGONAL LINE BY TURRET variety. Row 10/1 & 10/2 Plate 2A. SG 245f.	£280
240	1946 KGV Victory 2½d green. A superb u/m never hinged copy PRINTED DOUBLE, ONE ALBINO which is clearly visible. Very scarce. SG 268a.	£500
241	1954-59 QEII 8c in the two listed shades, deep carmine-red and deep carmine-lake, both u/m never hinged blocks of four. SG 288,288a.	£80

GAMBIA

Lot	Description	Est.
242	1898-1902 QV 2½d ultramarine. A very fine mint example showing the MALFORMED "S" variety. Row 7/3 left pane Plate 2. Scarce. SG 40a.	£360
243	1902-05 KEVII 2d orange & mauve. A very fine mint copy showing the DENTED FRAME variety. Row 1/6 left pane. SG 47a.	£170
244	1902-05 KEVII 3d purple & ultramarine. A very fine used copy showing the DENTED FRAME variety. Row 1/6 left pane. SG 49a.	£150
245	1906 KEVII ½d on 2s6d purple & brown/yellow. A very fine mint pair with the left-hand copy showing the BROKEN "E" variety. Row 2/1. See footnote in Gibbons. The copy with variety also shows BROKEN TOP BAR in surcharge variety. SG 69,69 var.	£120
246	1909 KEVII 4d black & red/yellow. A very fine mint copy showing the DENTED FRAME variety. Row 1/6 left pane. SG 76a.	£190
247	1912-22 KGV complete set of seventeen all very fine mint and includes all listed shades. Thirty stamps in total. SG 86-102.	£160
248	1918 KGV ½d deep green. A very fine used example showing the SPLIT "A" variety. Row 8/3 left pane and only found on printings up to 1918. SG 86c.	£110

GAMBIA

Lot	Description	Est.
249	1915 KGV 1d rose-red. A very fine used example showing the SPLIT "A" variety. Row 8/3 left pane and only found on printings up to 1918. Scarce. SG 87c.	£100
250	1912-22 KGV 2d greyish slate. A very fine mint example showing the SPLIT "A" variety. Row 8/3 left pane on printings up to 1918. SG 89a.	£135
251	1912-22 KGV 6d dull & bright purple. A very fine mint copy showing the SPLIT "A" variety. Row 8/3 left pane and corrected on later printings. SG 94a.	£200
252	1912-22 KGV 1s black/green. A very fine mint example showing the SPLIT "A" variety. Row 8/3 left pane on printings up to 1918. SG 97b.	£220
253	1921-22 KGV complete set of ten in fine SE corner Plate 1 pairs (apart from the 4s value with margins removed) all overprinted SPECIMEN. Samuel Type D12. SG 108s-117s.	£600
254	1921-22 KGV 10d pale sage-green & carmine. A very fine mint example showing the WATERMARK REVERSED. SG 116x.	£90
255	1922-29 KGV 1s purple/yellow. A very fine mint copy showing the WATERMARK INVERTED. SG 120w.	£140
256	1935 KGV Silver Jubilee 1½d deep blue & scarlet in an u/m never hinged SW corner block of four with the top left-hand copy showing the EXTRA FLAGSTAFF variety. Row 9/1 Plate 1. Hinged in margin only. SG 143,143a.	£280
257	1936 KGV Silver Jubilee 3d brown & deep blue in an u/m never hinged NW corner block of four with the lower left-hand copy showing the SHORT EXTRA FLAGSTAFF variety. Row 2/1 Plate 2. This stamp also shows SLOPING LINE from top to bottom through left Chapel Gable column variety. Lightly hinged in the margin only. SG 144,144b.	£225
258	1935 KGV Silver Jubilee 6d light blue & olive-green. A fine mint copy showing the SHORT EXTRA FLAGSTAFF variety. Row 2/1 Plate 2. Lightly toned gum. SG 145b.	£260
259	1935 KGV Silver Jubilee 1s slate & purple in an u/m never hinged NE corner block of four with the lower left-hand copy showing the LIGHTNING CONDUCTOR variety. Row 2/5 Plate 3. SG 146,146c.	£375

GIBRALTAR

Lot	Description	Est.
260	1889 QV 25c on 2½d bright blue. A fine u/m never hinged SW corner Plate 1 block of four with the right vertical pair showing the '5' WITH SHORT FOOT variety. Light diagonal crease affecting the lower pair (including one variety). SG 18,18a.	£160
261	1889 QV 75c on 1s bistre in a very fine mint NW corner Plate 1 block of four with the right-hand vertical pair showing the "5" WITH SHORT FOOT variety, Se-tenant with normal. SG 21,21a.	£325

GIBRALTAR

Lot	Description	Est.
262	1912-24 KGV 8s dull purple & green. A very fine mint NE corner Plate 1 copy. SG 84.	£95
263	1912-24 KGV £1 dull purple & black/red. An u/m never hinged NE corner Plate 1 copy with small Dealers Security Mark on reverse. SG 85.	£160
264	1935 KGV Silver Jubilee complete set of four all very fine mint matching SW corner pairs with each value showing the EXTRA FLAGSTAFF variety. Row 9/1 Plate 1. SG 114-117,114a-117a.	£700
265	1935 KGV Silver Jubilee 2d ultramarine & grey-black. A very fine used copy showing the LIGHTNING CONDUCTOR variety. Row 2/5 Plate 3. SG 114c.	£125
266	1935 KGV Silver Jubilee 3d brown & deep blue. A very fine mint copy showing the SHORT EXTRA FLAGSTAFF variety. Row 2/1 Plate 2. SG 115b.	£250
267	1935 KGV Silver Jubilee 6d green & indigo. A very fine mint vertical pair with the upper stamp showing the Row 9/1 Plate 1 EXTRA FLAGSTAFF variety. SG 116,116a.	£215
268	1950 KGV New Constitution 1s black & green. A very fine mint lightly hinged copy showing the BROKEN "R" variety. Row 9/4 Frame Plate 2. SG 143a.	£100
269	1953-59 QEII 3d greenish blue in an u/m never hinged lower marginal DE LA RUE Imprint block of four. SG 150b.	£80
270	1971 QEII 2p multicoloured Military Uniforms (Royal Reg. of Fusiliers). An u/m never hinged copy showing the WATERMARK INVERTED variety. SG 291w.	£80
271	1977-82 QEII 6p multicoloured 'Black Kite'. A superb u/m never hinged copy showing the WATERMARK INVERTED. SG 381w.	£135
272	1977-82 QEII 15p multicoloured 'Winged Asparagus Pea'. A superb u/m never hinged copy showing the WATERMARK INVERTED. SG 384bw.	£135
273	2018 QEII 'Gibraltar Cannons' complete set of twelve in superb u/m never hinged NW corner Cylinder blocks of four. SG 1791-1802.	£70

GILBERT & ELLICE ISLANDS / KIRIBATI & TUVALU

Lot	Description	Est.
274	1935 KGV Silver Jubilee 1d ultramarine & grey-black in a very fine mint SW corner block of eight with the top left-hand copy showing the FLAGSTAFF ON RIGHT-HAND TURRET variety. Row 7/1 Plate 5. Top pair including variety very lightly hinged, rest u/m never hinged. SG 36,36d.	£210
275	1956-62 QEII 2d in the two listed shades, bluish green & deep purple and bluish green & purple, both shades in u/m never hinged blocks of four. SG 66,66a.	£120
276	1956-62 QEII 2d in the two listed shades, bluish green & deep purple and bluish green & purple, both shades in u/m never hinged SE corner BRADBURY WILKINSON Imprint Plate 1a blocks of eight. SG 66,66a.	£240

GOLD COAST / GHANA

Lot	Description	Est.
277	1965 Postage Due 6p. on 6d bright ultramarine with purple-brown surcharge in an u/m never hinged block of four clearly showing the error SURCHARGE DOUBLE variety. Comes with a normal block for comparison. SG D22b, D22ba.	£110
278	1951-52 Postage Due 2d black. A superb u/m never hinged complete upper marginal block of twelve with the top right-hand copy showing the SERIF ON "d" variety. Row 1/6. SG D5,D5d.	£80
279	1951-52 Postage Due 2d black. A superb u/m never hinged complete lower marginal block of twelve with the right-hand vertical pair showing the LARGE "d" variety. Row 9/6 & 10/6. SG D5,D5c x2.	£80
280	1904 QV & KEVII mixed franking, ½d x2 (SG 26), 3d (SG 29), ½d (SG 38) & 1d (SG 39) all very fine used on "BASEL MEDICAL MISSION GOLD COAST" Stationery Envelope sent to Germany. All stamps tied to cover by "ACCRA" cds dated "SE 6 1904". Receiving mark on back dated "23 9 '04".	£75
281	1913-21 KGV 3d purple/yellow. A very fine used copy showing the WATERMARK INVERTED variety. SG 77aw.	£170
282	1916 KGV 10s green & red/blue-green (olive back) in a very fine mint NE corner Plate 8 block of four. Top corner copy hinged, rest u/m never hinged. SG 83a.	£275
283	1935 KGV Silver Jubilee complete set of four in u/m never hinged marginal blocks of four. All very lightly hinged in the margin only. SG 113-116.	£120
284	1935 KGV Silver Jubilee 1d ultramarine & grey-black. A very fine used copy showing the EXTRA FLAGSTAFF variety. Row 9/1 Plate 1. SG 113a.	£90
285	1935 KGV Silver Jubilee 1d ultramarine & grey-black. A very fine mint copy showing the SHORT EXTRA FLAGSTAFF variety. Row 2/1 Plate 2. SG 113b.	£185
286	1938-44 KGV complete set of thirteen very fine mint perforated SPECIMEN. Samuel Type B9. SG 120s-132s.	£480

GRENADA

Lot	Description	Est.
287	1888 QV 4d on 2s orange. A very fine used copy showing FIRST "S" IN "SHILLINGS" INVERTED variety. David Brandon Certificate (1995). SG 41c.	£240
288	1902 KEVII complete set of ten very fine mint overprinted SPECIMEN. Samuel Type D12. SG 57s-66s.	£160
289	1908-11 "Badge of the Colony" 6d dull purple & purple in an u/m never hinged NE corner Plate 1 block of four. SG 85.	£100
290	1922 KGV 1s black/green on emerald back. A very fine mint lightly hinged copy showing the WATERMARK INVERTED. SG 98dw.	£90
291	1913 KGV 1s black/green, 1s black/green (white back) and 1s black/green (emerald back), all very fine mint overprinted SPECIMEN. Samuel Type D12. SG 98s, 98as, 98ds.	£95

NOTE - THERE IS NO BUYERS PREMIUM OR HANDLING CHARGES.

GRENADA

Lot	Description	Est.
292	1935 KGV Silver Jubilee ½d black & green. A very fine mint copy showing the KITE & VERTICAL LOG variety. Row 10/6 Plate 2A. SG 145k.	£65
293	1935 KGV Silver Jubilee 1s slate & purple. A very fine mint copy showing the KITE & HORIZONTAL LOG variety. Row 10/6 Plate 2B. SG 148l.	£225
294	1938-50 KGVI 3d black & olive-green perf 12½. A very fine mint copy showing the COLON FLAW. Row 5/6 and corrected on the November 1950 printing. SG 158ba.	£100
295	1943 "Badge of the Colony" 10s blue-black & carmine (narrow) perf 14 from the September 1943 printing in an u/m never hinged right-hand marginal block of four. CW 25a. SG 163e.	£150

HONG KONG

Lot	Description	Est.
296	1912-21 KGV 50c black/blue-green (white back). An u/m never hinged copy overprinted SPECIMEN. Samuel Type D12. SG 111as.	£150
297	1921-37 KGV 4c carmine-rose in a very fine mint horizontal pair. The right-hand copy shows TOP OF LOWER CHINESE CHARACTERS AT RIGHT BROKEN OFF variety. Row 9/4 lower left pane. SG 120,120b.	£80
298	1935 KGV Silver Jubilee 3c ultramarine & grey-black in an u/m never hinged NE corner block of four with the lower left-hand copy showing the LIGHTNING CONDUCTOR variety. Row 2/5 Plate 3. SG 133,133c.	£300
299	1935 KGV Silver Jubilee 3c ultramarine & grey-black. A very fine used copy showing the LIGHTNING CONDUCTOR variety. Row 2/5 Plate 3. Variety well clear of postmark. SG 133c.	£200
300	1938-52 KGVI 25c bright blue in an u/m never hinged NW corner block of four with Requisition Number "Z06146" in left-hand margin. SG 149.	£120

INDIA

Lot	Description	Est.
301	1865 QV 1a pale brown Watermark 13 in an u/m never hinged block of nine. SG 58.	£225
302	1890 QV 3a brown-orange Watermark 34 in an u/m never hinged SW corner block of nine. Hinged once in lower margin only. SG 94.	£170
303	1926-33 KGV 2a bright purple in a very fine mint lightly hinged SE corner block of four. The lower right-hand variety shows the STOP UNDER 's' IN RIGHT VALUE TABLET variety. Row 4/16. The top right-hand stamp is very lightly hinged, rest including variety u/m never hinged. Scarce. SG 205,205a.	£550
304	1935 KGV Silver Jubilee compete set in either u/m never hinged or very fine mint lightly hinged blocks of four all with White Gum. Some blocks very lightly hinged on one stamp only (1a and 2½a), some blocks very lightly hinged on the top pair only (3½ and 8a), rest u/m never hinged. SG 240-246.	£150

INDIA - CONVENTION STATES - CHAMBA

Lot	Description	Est.
305	1940-43 KGVI Official 2r purple & brown in an u/m never hinged block of four. SG O84.	£100
306	1900-04 QV 3p grey. A very fine mint copy showing the OVERPRINT INVERTED. SG 23a.	£80

INDIA - CONVENTION STATES - GWALIOR

Lot	Description	Est.
307	1949 KGVI set of nine all u/m never hinged except the top value (SG 137) which is hinged. SG 129-137.	£725

INDIA - CONVENTION STATES - NABHA

Lot	Description	Est.
308	1885-97 QV Official ½a blue-green. A very fine mint lightly hinged copy showing the error 'SERVICE' DOUBLE, ONE ALBINO variety. SG O6c.	£70

INDIA - EXPEDITIONARY FORCES

Lot	Description	Est.
309	1901 QV 1d green & carmine. Two superb used examples each tied to a separate small piece by complete strikes of two different "F.P.O No.4" postmarks of Tongku. Types D5 (double-ring) and D6 (single ring). Both copies with matching 11 JL '01 dates! Ex Stanley Gibbons. SG C10.	£75

INDIA - FEUDATORY STATES - BARWANI

Lot	Description	Est.
310	1947 KGVI 1r booklet with grey tissue cover inscribed "32 STAMPS Value Re. 1/-" containing thirty-two x ½a (SG 33B) in panes of four. SG SB8.	£800
311	1922 'Rana Ranjit Singh' 2a purple. An u/m never hinged horizontal IMPERF PAIR. No gum as issued. UNLISTED. Scarce. SG 11 var.	£180
312	1947 Rana Devi Singh ½a blue-green wide setting in an u/m never hinged booklet pane of four. Scarce. Ex 2r booklet (SG SB8) cat £1000 complete for four panes! SG 33B.	£80

INDIA - FEUDATORY STATES - BHOPAL

Lot	Description	Est.
313	1911 Official 4a brown in an u/m never hinged block of four showing the OVERPRINT INVERTED variety. SG O308a.	£80

INDIA - FEUDATORY STATES - BIJAWAR

Lot	Description	Est.
314	1935-36 "Maharaja Sarwant Singh" 3p brown perf 11 in an u/m never hinged COMPLETE PANE of six. SG 1.	£75

INDIA - FEUDATORY STATES - BIJAWAR

Lot	Description	Est.
315	1935-36 "Maharaja Sarwant Singh" 6p carmine perf 11 in a superb u/m never hinged COMPLETE PANE of six. SG 2.	£65

INDIA - FEUDATORY STATES - BUNDI

Lot	Description	Est.
316	1941-44 KGVI 2a chestnut in an u/m never hinged complete sheet of twelve. Scarce piece. SG 82.	£95
317	1941-44 KGVI 2a deep brown in a superb unused no gum as issued complete sheet of twelve. Scarce piece. SG 82a.	£150
318	1941-44 KGVI 4a bright green in an u/m never hinged complete sheet of twelve. Scarce piece. SG 83.	£155

INDIA - FEUDATORY STATES - COCHIN

Lot	Description	Est.
319	1933-38 Maharaja Rama Varma III 1a brown-orange (as SG 57) in an imperf PLATE PROOF pair on ungummed watermarked paper. Scarce.	£80

INDIA - FEUDATORY STATES - INDORE

Lot	Description	Est.
320	1946 "Maharaja Yeshwant Rao Holkar II" 4a yellow-brown in an u/m never hinged left-hand marginal block of four. SG 41.	£75

INDIA - FEUDATORY STATES - RAJASTHAN

Lot	Description	Est.
321	1948-49 KGVI 4a orange machine overprint in a superb u/m never hinged complete sheet of 20 with Sheet Number "223" in top margin. SG 12.	£130

IRAQ - BAGHDAD

Lot	Description	Est.
322	1917 2a on 1pi dull blue. A very fine mint copy of this scarce WWI stamp. Only 747 copies issued. Very under catalogued by Gibbons. BPA Certificate (1981). SG 18.	£600

IRAQ / MESOPOTAMIA

Lot	Description	Est.
323	1931 Official 25r violet P12 overprinted with Type O13 vertically sideways. A superb used copy tied to piece with a double-circle 'SOR / BAGHDAD' (Sorting Office) postmark dated '1 APR'. BPA Certificate (2022) and NPS Certificate (1980). Scarce. SG O105.	£3,750

IRELAND

Lot	Description	Est.
324	1951-53 2s6d black on buff cover complete booklet Edition 36-53 in superb condition containing six ½d (SG 133w), twelve 1d (SG 112aw) and six 2½d stamps (SG 115w) all in blocks of six. All panes with WATERMARK INVERTED. SG SB9 var. Stamps cat £178.	£100
325	1922 KGV 3d blueish violet in a very fine mint SW corner Control S21 Plate 11 strip of three. Perf Type 2. Two copies u/m never hinged. Hibernian catalogue TC16. SG 5.	£90
326	1922 KGV 4d grey-green with carmine overprint in a very fine mint SW corner Control S22 Plate 1e strip of three. Perf Type 2. Two copies u/m never hinged. Hibernian catalogue TC46. SG 6c.	£200
327	1922 KGV 9d agate in a very fine mint SW corner Control S21 Plate 2b strip of three. Perf Type 2. Two copies u/m never hinged. Hibernian catalogue TC42. SG 8b.	£300
328	1922 KGV 1½d red-brown. A very fine mint right marginal block of four showing the "PENCf" error on the lower right stamp. Row 15/12. Hinged on top pair & bottom pair including variety u/m never hinged. SG 10,10a.	£275
329	1922 KGV 6d deep reddish purple in a very fine mint SW corner Control S dot 21 Plate 4 strip of three. Perf Type 2. Two copies u/m never hinged. Hibernian catalogue TC59. SG 14a.	£75
330	1922 KGV 1s bistre-brown in a very fine mint SW corner Control S22 Plate 4 strip of three. Perf Type 2. Two copies u/m never hinged. Hibernian catalogue TC65. SG 15.	£70
331	1922 KGV 2d orange (Die I) in a very fine mint SW corner Control T22 Plate 6 strip of three. Perf Type 2A. Hibernian catalogue TC83. SG 33.	£90
332	1922 KGV 2½d blue in a very fine mint SW corner Control T22 Plate 8b block of six. Perf Type 2. Four copies u/m never hinged. Hibernian catalogue TC88. SG 35.	£180
333	1922 KGV 9d agate in a very fine mint SW corner Control S22 Plate 3b strip of three. Perf Type 2. Two copies u/m never hinged. Hibernian catalogue TC98. SG 40.	£70
334	1922 KGV 9d olive-green in a very fine mint SW corner Control T22 Plate 2b block of six. Perf Type 2. Four copies u/m never hinged. Hibernian catalogue TC100. SG 41.	£100
335	1922 KGV 10d turquoise-blue in a very fine mint SW corner Control S22 Plate 1c strip of three. Perf Type 2A. Two copies u/m never hinged. Hibernian catalogue TC103. SG 42.	£160
336	1922 KGV 1s olive-bistre. A very fine mint SW corner Control T22 Plate 3 block of six. Perf Type 2. Four copies u/m never hinged. Hibernian catalogue TC119. SG 51.	£350
337	1922-23 KGV ½d green. A very fine mint copy showing the ACCENT INSERTED BY HAND variety. Row 15/12. SG 52b.	£80
338	1922 KGV 1d scarlet in a very fine mint horizontal strip of six. The third stamp shows REVERSED 'Q' FOR 'O' variety. Row 15/9 Control T22. SG 53,53e.	£295

ALL LOTS ARE OFFERED ON A 'NO QUIBBLE, FULLY REFUNDABLE BASIS.'

IRELAND

Lot	Description	Est.
339	1922-23 KGV 2d orange (Die II) in a very fine mint SW corner Control T22 Plate 2 block of six. Perf Type 2. Four copies u/m never hinged. Hibernian catalogue TC149. SG 55.	£70
340	1922-23 KGV 4d grey-green in a very fine mint SW corner Control U22 Plate 1e block of six showing the Row 19/2 BREAK OVER "FOUR" variety. Perf Type 2. Three copies u/m never hinged. Hibernian catalogue TC158. SG 58.	£120
341	1922-23 KGV 2s6d chocolate-brown "Seahorses". An u/m never hinged upper marginal copy showing the MAJOR RE-ENTRY variety. Row 1/2. MacDonnell Whyte Certificate (1985) and Richter Certificate (1993). Hinged in margin only. SG 64a.	£950
342	1927 KGV 'Seahorses' set of three from the Bradbury Wilkinson printing in very fine mint lightly hinged vertical pairs each showing the WIDE & NARROW DATES se-tenant. Lower copies u/m never hinged. Scarce. SG 83a-85a.	£1,750
343	1940-68 "Arms of Ireland" 2½d red-brown. An u/m never hinged booklet pane showing the WATERMARK INVERTED. CW P10a. SG 115w.	£110

JAMAICA

Lot	Description	Est.
344	1905 5s grey & violet 'Arms' Issue in a very fine mint block of four. Lower pair u/m never hinged. SG 45.	£200
345	1912-20 KGV 2s in two shades, purple & bright blue (listed) and purple & deep blue (unlisted), both copies very fine mint. SG 66, 66 var.	£40
346	1916 KGV 3d purple/lemon 'WAR STAMP' issue. A very fine mint block of four with the top right-hand copy showing the error 'S' IN 'STAMP' OMITTED variety. SG 72,72b.	£725
347	1941 KGVI 5s slate-blue & yellow orange Perf 14 (line). A very fine mint lightly hinged copy. David Brandon Certificate (2022). Scarce. SG 132a.	£3,750

KENYA, UGANDA & TANGANYIKA

Lot	Description	Est.
348	1912-21 KGV 25c black & red/yellow (white back). A very fine mint copy overprinted SPECIMEN. Samuel Type D12. SG 50as.	£30
349	1935 KGV Silver Jubilee 20c light blue & olive-green. An u/m never hinged copy showing the DIAGONAL LINE BY TURRET variety. Row 10/1 & 10/2 Plate 2A. SG 124f.	£95
350	1935 KGV Silver Jubilee 1s slate & purple. A very fine mint copy showing the LINE THROUGH "O" OF "1910" variety. Row 4/2. SG 127l.	£105

KUWAIT

Lot	Description	Est.
351	1923-24 KGV 1r orange-brown & deep turquoise-green. A very fine mint copy showing the OVERPRINT DOUBLE, ONE ALBINO variety. SG O10b.	£150
352	1934 Registered Airmail cover addressed to England bearing 2a deep blue-green (SG 31) and scarce 4a olive-green (SG 33) cancelled with a neat double-ring "KUWAIT / REG" postmark dated 16 FEB '34 (Donaldson Type 7). Backstamped with a further strike of the same postmark. Front also shows a blue on white Registration Label No "28" handstamped "KUWAIT" in black in both English & Arabic. Holcombe Certificate (1991). The 4a is rare on cover. SG 31,33.	£650
353	1933-34 KGV 4a olive-green. A very fine mint lightly hinged copy showing FEINT 'WAIT' IN 'KUWAIT' variety. SG 33 var.	£175
354	1939 KGVI 2r purple & brown in an u/m never hinged SW corner block of six (3x2) and shows FIRST REPAIR TO THE EXTENDED 'T' variety. Row 3/2 left pane. Listed in the Commonwealth catalogue as CW 11b. SG 48a var.	£975
355	1939 KGVI 10r purple & claret. An u/m never hinged block of four from the top left pane of the sheet clearly showing the OVERPRINT DOUBLE. Only 120 copies known. A scarce block. SG 50a.	£2,100
356	1948 KGVI Silver Wedding 15r on £1 blue. A very fine mint copy showing the Row 3/4 SHORT BARS variety. SG 75a.	£150
357	1957 QEII set of Waterlow high values in superb unmounted mint never hinged NW corner blocks of four from the scarce Type II plate-printed overprints. The 10r on 10s block shows the Row 1/2 WEAK ENTRY variety (SG GB Spec T14a). Only 108 copies of this variety can exist. See Donaldson page 177. SG 107a-109a, 109a var.	£1,100
358	1958-60 "Shaikh Abdullah" complete set of thirteen in u/m never hinged blocks of four, the majority being Plate blocks. SG 131-143.	£250

LABUAN

Lot	Description	Est.
359	1894 QV 16c grey in an u/m never hinged block of four. SG 56.	£140
360	1896 "Jubilee" 1c black and grey-mauve. A fine mint NE corner block of six (2x4) with Row 3/10 showing the 'JUBILE' ERROR variety. Ex complete sheet of one hundred and comes with original BPA Certificate (1998) for the sheet. Hinged on top pair, variety u/m never hinged. A rare piece. SG 83,83d.	£2,250
361	1897 (23rd November) Registered cover addressed to London bearing 12c black & vermilion (SG 98) and 18c black & olive-bistre (SG 99), both individually tied with blue-black 'LABUAN' cds postmarks dated NO 23 1897. Top left with large oval 'R' handstamp and lower left with curved "REGISTERED / NO" handstamp also in the same blue-black ink. Bottom right with black oval Registered London transit postmark dated 22 DE '97 and reverse backstamped with a Tottenham S.O. (Sorting Office) cds dated DE 213 '97.	£130

LEEWARD ISLANDS

Lot	Description	Est.
362	1928 KGV £1 purple & black/red. A very fine used example showing the DAMAGED LEAF AT BOTTOM RIGHT variety. Row 5/6. Unpriced used in Stanley Gibbons. SG 80f.	£450
363	1935 KGV Silver Jubilee complete set of four in u/m never hinged marginal blocks of four. All very lightly hinged in the margin only. SG 88-91.	£150
364	1935 KGV Silver Jubilee 1s slate & purple. An u/m never hinged copy showing the KITE & HORIZONTAL LOG variety. Row 10/6 Plate 2B. SG 91f.	£525
365	1938-51 KGVI complete set of thirteen very fine mint perforated SPECIMEN. Samuel Type D20. SG 95s-114s.	£675
366	1947 KGVI 1d red in an u/m never hinged horizontal pair with the right-hand copy showing the "DI" FLAW. Row 7/3 left pane on printings from Sept 1947 until corrected on Oct 1948 printings. SG 99c,99ca.	£150
367	1943 KGVI 10s green & red/green on ordinary paper. A superb used horizontal pair individually cancelled with 'MONTserrat' cds postmarks - the right-hand copy showing the Row 4/8 DAMAGED CLICHÉ variety. Listed in the Commonwealth Catalogue as CW 12b Type H. SG 113b,113b var.	£725

LONG ISLAND

Lot	Description	Est.
368	1916 ½d blue on thin horizontally laid paper. A very fine mint right-hand marginal copy with large margins all round. Although it is believed only three sheets of twenty were printed (60 stamps), only ten examples have been recorded by Gibbs. Rare. SG 8.	£1,600
369	1916 ½d mauve on thin horizontally laid paper. A fine mint right-hand marginal block of four from Plate 3 showing Positions 11-12 and 15-16. Only 160 examples were printed with 43 remainders ultimately destroyed. Gibbs records only 65 unused examples. Only six blocks of four known. Few light creases. Scarce. Signed Gibbs. SG 9.	£2,300
370	1916 1d mauve on thin horizontally laid paper. A very fine mint SE corner block of four from Plate 4 showing Positions 15-16 and 19-20. The lower right-hand copy (Position # 20) shows the variety "ONR" FOR "ONE ERROR. Only 7 examples of this error have been recorded. This error occurred on Plate 2 (Position # 17), Plate 4 (Position # 18 and 20), Plate 5 (Position # 13) and Plate 6 (Position # 18). Rare. SG 12,12f.	£3,100
371	1916 1s black on thin horizontally laid paper. A very fine mint SE corner block of four from Plate 4 showing Positions 15-16 and 19-20. Only 168 examples were printed with Gibbs recording only 80 unused examples. This block of four is one of six known. Scarce multiple. SG 20.	£1,200
372	1916 2d black on thin wove paper. A very fine mint example from the TOP IMPRESSION affixed to small piece. Top impressions are rare with only 48 printed (two sheets of twenty four) versus 120 carbon copies (plus one sheet of twenty four initialed in red). A rare stamp with only sixteen examples recorded, half of which is a block of eight. SG 30.	£500

NOTE - RESERVES ARE NORMALLY 80%-90% OF THE ESTIMATED PRICES.

MALAYA - JAPANESE OCCUPATION KELANTAN

Lot	Description	Est.
373	1942 KGVI 25c on 10c purple. A very fine mint copy overprinted with SUNAGAWA OVAL SEAL (Gibbons Type 5) in red. BPA Certificate (1987). Scarce. SG J24.	£1,875

MALAYA - JAPANESE OCCUPATION PENANG

Lot	Description	Est.
374	1942 KGVI 8c grey Malaya Straits overprinted with Type 13 in red in a very fine mint right marginal block of four showing the OVERPRINT DOUBLE, ONE INVERTED. BPA Certificate (2003). Hinged on top pair only, lower pair u/m never hinged. Scarce multiple. SG J81b.	£1,800

MALAYA - JOHORE

Lot	Description	Est.
375	1952 'Sultan Sir Ibrahim' 6c pale grey in a superb u/m never hinged upper marginal block of nine with the centre stamp showing the ST. EDWARD'S CROWN WATERMARK ERROR. KGVI Certificate (2010). Scarce. SG 137a,137ac.	£2,450

MALAYA - KEDAH

Lot	Description	Est.
376	1920 "Sheaf of Rice" 3c deep purple. A very fine mint copy with WATERMARK INVERTED & REVERSED. SG 19y.	£65
377	1922-40 "Sheaf of Rice" 5c yellow. A very fine mint lightly hinged copy showing the WATERMARK INVERTED. SG 55w.	£70
378	1937 'Sultan Abdul Hamid Halimshah' complete set of nine very fine mint perforated SPECIMEN. Samuel Type W8. SG 60s-68s.	£260
379	1965 'Phalaenopsis Violacea' 20c multicoloured in an u/m never hinged right-hand marginal block of four showing the error BRIGHT PURPLE (BLOOMS) OMITTED variety. SG 121a.	£1,650

MALAYA - KELANTAN

Lot	Description	Est.
380	1951-55 'Sultan Ibrahim' complete set of twenty-one in u/m never hinged corner PLATE '1' PAIRS. Fours pairs from the NW corner, rest all SE corner pairs. SG 61-81.	£400

MALAYA - NEGRI SEMBILAN

Lot	Description	Est.
381	1957-63 Collection of the entire Definitive Set with Arms of Negri Sembilan neatly described over sixteen album pages in PLATE BLOCKS of four (48) or in PLATE PAIRS (4). The pages describe the various shades and printing dates. Plate Numbers noted are 1A, 1B, 1C and 1. There are two complete sets in blocks of four. The whole collection is u/m never hinged. SG 68-79.	£1,200

MALAYA - PENANG

Lot	Description	Est.
382	1965-68 5c multicoloured "Paphiopedilum Niveum" flower in a u/m never hinged cylinder 1B block of 40 being the complete bottom 4 rows of the sheet. Eight copies on the right above the cylinder number show the error BLUE (BACKGROUND & INSCRIPTION) COMPLETELY OMITTED with a further four copies showing the BLUE PARTIALLY OMITTED. A remarkable rare piece - ex Sir Gawaine Baillie. SG 68d x 8.	£5,750
383	1965-68 'Rhyncostylis Retusa' 15c multicoloured. A superb u/m never hinged right marginal horizontal pair with the right copy showing IMPERF TO RIGHT MARGIN variety. SG 71,71 var.	£80
384	1965-68 'Phalaenopsis Violacea' 20c multicoloured. A superb u/m never hinged copy showing the error BRIGHT PURPLE (BLOOMS) OMITTED. Comes with normal for comparison. SG 72a.	£750

MALAYA - PERAK

Lot	Description	Est.
385	1889 QV 1c on 2c bright rose. A very fine used copy showing the SHORT "R" variety. SG 37c.	£95
386	1895-99 'Tiger' 1c dull purple & green. A very fine mint copy showing the MALFORMED 'C' variety. Row 9/3. SG 66a.	£120
387	1900 'Tiger' 1c on 5c dull purple & olive-yellow. A very fine mint copy showing the ANTIQUE 'e' IN 'Cent' variety. Row 9/4. SG 83b.	£75

MALAYA - STRAITS SETTLEMENTS

Lot	Description	Est.
388	1892 QV 1c on 6c lilac Watermark 'Crown CA'. A very fine used copy showing the OVERPRINT DOUBLE, ONE INVERTED variety. Only 1 pane of sixty printed, with only 54 possible due to the vertical overprint shift. Ceremuga Certificate (2003). SG 90a.	£1,500
389	1904-10 KEVII \$25 grey-green & black. A very fine mint lightly hinged copy overprinted SPECIMEN. Samuel Type D12. SG 139s.	£400
390	1921-33 KGV 10c bright blue. A very fine used copy showing the WATERMARK INVERTED. SG 230w.	£65
391	1922 KGV 25c dull purple & mauve 'MALAYA - BORNEO EXHIBITION'. A very fine used copy showing the SMALL SECOND "A" in "MALAYA" variety. SG 245d.	£65

MALAYA - THAI OCCUPATION GENERAL ISSUE

Lot	Description	Est.
392	1944 "War Memorial" complete set of six all in superb used blocks of four with each block centrally struck with a clear "TRENGGANU" cds. SG TM1-TM6.	£550

MALAYA - TRENGGANU

Lot	Description	Est.
393	1917-18 "Sultan Zain ul ab din" 3c + 2c carmine-red 'RED CROSS' issue surcharged with Gibbons Type 3 (Setting III) showing all varieties corrected, in an u/m never hinged Plate 1 complete sheet double pane of one-hundred and twenty (two panes of sixty). Bottom margin shows additional 'RED CROSS' overprint. SG 19.	£120
394	1961 'Tiger' 10c deep maroon in an u/m never hinged SE corner Plate 1A block of four. SG 94a.	£80

MALAYSIA

Lot	Description	Est.
395	1965 50c multicoloured 'Black-nailed Oriole'. A superb u/m never hinged right-hand marginal block of four showing the WATERMARK INVERTED. SG 22w.	£80

MALTA

Lot	Description	Est.
396	1863-81 QV ½d bright-orange Watermark Crown 'CC'. A very fine mint copy showing the error WATERMARK INVERTED. Scarce. SG 5w.	£1,350
397	1922 "Shipwreck of St Paul" 10s black in an u/m never hinged NE corner block of four. SG 104.	£1,500
398	1935 KGV Silver Jubilee 2½d brown & deep blue. A very fine mint copy showing the EXTRA FLAGSTAFF variety. Row 9/1 Plate 1. SG 211a.	£105
399	1935 KGV Silver Jubilee 6d light blue & olive-green in a very fine mint SW corner block of four with the top left-hand copy showing the EXTRA FLAGSTAFF variety. Row 9/1 Plate 1. SG 212,212a.	£150
400	1948 KGV Silver Wedding £1 indigo in an u/m never hinged lower marginal BRADBURY WILKINSON imprint block of four. SG 250.	£160
401	1965-70 QEII 1s3d multicoloured "International Eucharistic Congress". An u/m never hinged lower marginal vertical IMPERF PAIR. SG 341c.	£300
402	1973-76 QEII 4m multicoloured 'History' issue. An u/m never hinged right-hand marginal horizontal IMPERF PAIR. SG 487b.	£240

MAURITIUS

Lot	Description	Est.
403	1905 'Arms' 2c dull & bright purple on chalk surfaced paper in an u/m never hinged NE corner Plate 1 block of four. SG 165a.	£125
404	1937 KGV Coronation set very fine mint perforated SPECIMEN. Samuel Type D20. Certified as genuine. SG 249s-251s.	£90
405	1937 KGV Coronation 20c bright blue in an u/m never block of four with the top right-hand copy showing the LINE BY SCEPTRE variety. Row 5/3. SG 251,251b.	£70

ALL LOTS ARE OFFERED ON A 'NO QUIBBLE, FULLY REFUNDABLE BASIS.'

MAURITIUS

Lot	Description	Est.
406	1942 KGV 2c olive-grey Perf 15x14 in an u/m never hinged complete sheet of one-hundred and twenty from Plate 2. Row 10/5 shows the SERRATED EDGE variety. Row 10/5 Plate 2 Right Pane. SG 252b,252ba.	£140
407	1938-49 KGV 3c reddish purple & scarlet in an u/m never hinged NE corner block of twenty four (6x4) with two copies showing the SLICED 'S' AT RIGHT variety. Row 2/2 & 3/2 Right Pane. Also shows a MINOR FLAW - DISTORTED 'T' WITH FLECK NEAR BASE OF 'T' (Row 3/4). SG 253,253a x2.	£160
408	1938-52 KGV 2r50c in two shades, dull lavender (1947 Printing) and pale violet (1948 Printing), both copies on Chalk-surfaced paper and both u/m never hinged. Listed in the Commonwealth Catalogue as CW 10b,10c. SG 261c,261c var.	£90
409	1938-52 KGV 10r in two shades, reddish purple on Ordinary paper (1943 Printing) and deep purple on Chalk-surfaced paper (1948 Printing), both copies u/m never hinged. Listed in the Commonwealth Catalogue as CW 12a,12b. SG 263 var, 263a.	£75
410	1949 KGV Centenary set of four very fine mint perforated SPECIMEN. Samuel Type B9. SG 266s-269s.	£140
411	1965 QEII 50c light yellow-buff "Reunion Bulbul". A superb u/m never hinged left-hand marginal block of four with INVERTED WATERMARK. SG 326w.	£280

MONTserrat

Lot	Description	Est.
412	1935 KGV Silver Jubilee complete set very fine mint perforated SPECIMEN. Samuel Type W8. SG 94s-97s.	£90
413	1937 KGV Coronation set of three very fine mint perforated SPECIMEN. Samuel Type D20. SG 98s-100s.	£65

MOROCCO AGENCIES - BRITISH CURRENCY

Lot	Description	Est.
414	1903-05 KEVII 20c grey-green & carmine. A very fine mint pair with the right-hand copy showing the BROAD TOP TO "M" variety. Row 7/3 left-hand pane. SG 19,19b.	£130
415	1907-13 KEVII 1s dull green & carmine in an u/m never hinged block of four. SG 37.	£120
416	1910 KEVII 2s6d pale dull purple on chalk-surfaced paper from the De La Rue printing. A superb used copy on piece cancelled with a complete 'REGISTERED / BRITISH P.O. TANGIER' oval postmark dated 25 FE '10. SG 38.	£120
417	1914-31 KGV ½d green in a very fine mint SW corner Control R21 Plate 48 block of six. Perf Type 2. Row 20/3 shows DAMAGED 'N' IN 'AGENCIES' variety. SG 42,42 var.	£70

MOROCCO AGENCIES - FRENCH CURRENCY

Lot	Description	Est.
418	1925-34 KGV 75c on 9d olive-green Watermark 111 (Block Cypher) in a fine mint SW corner Control C25 Plate 2 block of six. Perf Type 2. SG 208.	£120
419	1935-37 KGV 15c on 1½d red-brown in a very fine mint SW corner Control X35 Cylinder 132 dot block of six. Perf Type 5. Small Format printing. SG 218.	£100

MOROCCO AGENCIES - GIBRALTAR ISSUES OVPT

Lot	Description	Est.
420	1898-1900 QV 20c olive-green & brown. A very fine mint copy showing the INVERTED "V" for "A" variety. Row 6/6 right-hand pane. SG 3a.	£90
421	1898-1900 QV 40c orange-brown. A very fine mint lightly hinged example showing the LONG TAIL TO "S" variety. Row 8/2 right pane. SG 5b.	£170
422	1898 (July) QV 40c orange-brown in a very fine mint NE corner Plate 2 block of four from the second setting showing blue-black overprint. Lightly hinged on lower pair only. SG 5f.	£180
423	1899 QV 1p bistre & ultramarine. A very fine mint pair with the right-hand copy showing the BROAD TOP TO "M" variety. Row 7/3 left-hand pane. SG 15,15b.	£155
424	1899 QV 1p bistre & ultramarine. A very fine mint copy showing the HYPHEN BETWEEN "nc" variety. Row 3/5 right-hand pane. SG 15c.	£135
425	1899-1902 QV 2p black & carmine. A superb u/m never hinged left-hand marginal block of eight (4x2) with the third stamp on top row showing the BROAD TOP TO "M" variety. Row 7/3 left-hand pane. SG 16,16b.	£650
426	1903-05 KEVII 20c grey-green & carmine. A very fine mint copy showing the HYPHEN BETWEEN "nc" variety. Row 3/5 right-hand pane. SG 19c.	£110
427	1903-05 KEVII 1p black & carmine. A very fine mint copy showing the HYPHEN BETWEEN "nc" variety. Row 3/5 right-hand pane. SG 22c.	£170
428	1905-06 KEVII 5c grey-green & green. A very fine mint pair with the right-hand copy showing the BROAD TOP TO "M" variety. Row 7/3 left-hand pane. SG 24,24b.	£105
429	1905-06 KEVII 25c purple & black/blue in a very fine mint block of four hinged only on the top pair. SG 27.	£170
430	1903-05 KEVII 50c purple & violet. A very fine mint copy showing the "CD" SIDEWAYS variety. Row 1/5 left pane. SG 28a.	£150

MOROCCO AGENCIES - SPANISH CURRENCY

Lot	Description	Est.
431	1907 KEVII 10c on 1d scarlet in a very fine mint SE corner Control J10 Plate 62a block of four. Perf Type V2A. SG 113.	£95

NOTE - THERE IS NO BUYERS PREMIUM OR HANDLING CHARGES.
--

MOROCCO AGENCIES - SPANISH CURRENCY

Lot	Description	Est.
432	1907-12 KEVII 1p on 10d slate-purple & carmine in an u/m never hinged left-hand marginal block of eight (4x2) showing CONTINUOUS RULE & HORIZONTAL & VERTICAL PILLARS in upper margin. Attractive. SG 120a.	£200
433	1915 KGV 25c on 2½d blue. A very fine mint Control C13 Plate 1b 'MADE UP' MINIATURE SHEET of thirty-six. Perf Type 2A. SG 133.	£80
434	1925-31 KGV 25c on 2½d blue. A very fine mint block of four showing the WATERMARK INVERTED. Hinged on top pair only, lower pair u/m never hinged. SG 147w.	£195
435	1948 KGV Olympic Games 1p20c on 1s brown. A very fine mint example showing the SURCHARGE DOUBLE. A KGV rarity with only one sheet of 120 copies issued in error. SG 181a.	£975

MOROCCO AGENCIES - TANGIER ZONE

Lot	Description	Est.
436	1927 KGV 1d scarlet in a very fine mint SE corner Control E26 Plate 'Unknown' block of six. Perf Type 2. SG 232.	£90
437	1935 KGV Silver Jubilee complete set of three in u/m never hinged marginal blocks of four. Lightly hinged in the margin only. SG 238-240.	£150
438	1937 KGV 1d scarlet in a very fine mint SW corner Control A37 Cylinder 3 dot block of six. Perforation Type 5. SG 246.	£130

NATAL

Lot	Description	Est.
439	1902-03 KEVII complete set of thirteen very fine mint overprinted SPECIMEN. Samuel Type D12. SG 127s-139s.	£220

NAURU

Lot	Description	Est.
440	1916-23 KGV 1d carmine-red. A very fine mint copy clearly showing on reverse the OVERPRINT DOUBLE, ONE ALBINO variety. SG 2cb.	£165
441	1916-23 KGV 2d orange (Die I). An u/m never hinged lower marginal block of four showing the WATERMARK INVERTED & REVERSED. Scarce in this condition. The lower right-hand copy also shows DAMAGED 'U' IN 'NAURU' variety. SG 4y, 4y var.	£425
442	1916-23 KGV 4d slate-green. A very fine mint copy clearly showing on reverse the OVERPRINT DOUBLE, ONE ALBINO variety. SG 8b.	£165

NEW GUINEA / N.W. PACIFIC IS

Lot	Description	Est.
443	1914 'G.R.I.' 1d on 5pf green on cream (without watermark) MARSHAL ISLANDS Postal Stationery Postcard (Borek type 11 of the 1900 issue) very fine unused. Listed as rare with less than 25 known! Gibbs PS1 (Setting A). H&G 1.	£300

NEW GUINEA / N.W. PACIFIC IS

Lot	Description	Est.
444	1914 'G.R.I.' 2d on 10pf carmine on cream (with border) MARSHAL ISLANDS Postal Stationery Postcard (Borek type 12 of the 1900 issue) very fine unused. Listed as rare with less than 25 known! Gibbs PS2 (Setting A). H&G 2.	£300
445	1914 'G.R.I.' 2d on 10pf carmine on cream (with border) GERMAN NEW GUINEA Postal Stationery Postcard (Borek type 9 of the 1913 issue) very fine unused. Listed as very scarce with less than 100 known! Gibbs PS3 (Setting A). H&G 2.	£250
446	1919 KGV ½d green. A very fine mint copy showing the WATERMARK INVERTED. SG 119w.	£100

NEW HEBRIDES - ENGLISH ISSUES

Lot	Description	Est.
447	1953 Postage Due complete set of five in u/m never hinged SE corner Plate 1 blocks of four. SG D11-D15.	£120
448	1908 KEVII 1d red. A very fine mint vertical pair with the lower copy showing the error OVERPRINT OMITTED variety. BPA Certificate (1994). A rarity with few examples known. SG 2a.	£7,500
449	1924 5d on 2½d ultramarine. A very fine mint left-hand marginal copy showing the SURCHARGE INVERTED. BPA Certificate (2016). One of only twenty recoded examples. Rare. SG 42a.	£2,600

NEW HEBRIDES - FRENCH ISSUES

Lot	Description	Est.
450	1938 Postage Due set of five very fine mint perforated SPECIMEN. Samuel Type B9. Certified as genuine. SG FD65s-FD69s.	£160

NEW ZEALAND

Lot	Description	Est.
451	1936-61 Official 6d scarlet perf 14½x14 in an u/m never hinged lower marginal Plate 2 block of four. SG O127c.	£70
452	1940 Official 4d chocolate & lake in an u/m never hinged upper marginal vertical pair with the top copy showing the Row 1/10 "ff" JOINED variety. SG O147, O147a.	£120
453	1940 Official 6d emerald-green & violet in an u/m never hinged upper marginal vertical pair with the top copy showing the Row 1/10 "ff" JOINED variety. SG O148, O148a.	£85
454	1954-63 QEII Official 4d blue. An u/m never hinged copy PRINTED ON THE GUMMED SIDE with normal for comparrison. SG O164a.	£150
455	1954-63 QEII Official 3s slate (white opaque paper). A superb u/m never hinged SE corner BRADBURY WILKINSON imprint Plate 10 block of four. CP NO39a(6). SG O167.	£160

NOTE - RESERVES ARE NORMALLY 80%-90% OF THE ESTIMATED PRICES.

NEW ZEALAND

Lot	Description	Est.
456	1898 "Huia" 3d black. A very fine mint IMPERF PLATE PROOF. SG 251 var.	£80
457	1907 "Mount Cook" ½d green perf 14 (line) in a superb u/m never hinged block of four. SG 374.	£140
458	1910 KEVII 3d chestnut perf 14 (line) in a very fine mint block of four. CP H3b. SG 395.	£150
459	1916 KEVII 8d indigo-blue perf 14x13½ (comb) in a very fine mint block of four. The lower pair u/m never hinged. CP H7c (1). SG 404.	£150
460	1915 KGV 8d red-brown in an u/m never hinged NW corner Plate 39 pair. CP K10d. SG 428.	£100
461	1920 Victory 6d violet in an u/m never hinged PLATE PROOF sheet of four on gummed paper. Scarce. SG 457 var.	£375
462	1936-42 'Maoro Girl' 3d brown Perf 14x13½. A superb u/m never hinged block of four showing the WATERMARK INVERTED. SG 582w.	£300
463	1938-44 KGV 1½d chocolate in an u/m never hinged left-hand marginal Plate 20 block of four. CP M4a(1)[4]. SG 607.	£80
464	1938-44 KGV 1½d chocolate in an u/m never hinged right-hand marginal Plate 21 block of four. CP M4a(1)[4]. SG 607.	£80
465	1947-52 KGV 6d carmine. A superb u/m never hinged top marginal copy showing the WATERMARK INVERTED. SG 683w.	£245
466	1960-66 "Kowhai" 3d yellow, green, yellow-brown & deep greenish blue. A superb u/m never hinged copy showing the error YELLOW OMITTED variety. Comes with normal for comparison. SG 785,785a.	£165
467	1960-66 "Kowhai" 3d yellow, green, yellow-brown & deep greenish blue. A superb u/m never hinged copy showing the error GREEN OMITTED variety. Comes with normal for comparison. SG 785,785b.	£240
468	1963 "Prince Andrew" 3d + 1d carmine Health Stamp issue in an u/m never hinged top marginal block of six (2x3). The lower right-hand copy shows the BLOODSTAINED FINGER variety. Row 3/5 Plate 1B. SG 816,816a.	£70
469	1975-81 \$1 multicoloured "Scallop". A superb u/m never hinged upper marginal vertical strip of three showing the error IMPERF BETWEEN upper pair which is also partially imperf at sides. Scarce. SG 1103a.	£350

NEW ZEALAND - NIUE

Lot	Description	Est.
470	1932-36 'Port of Avarua' 4d black & greenish blue. An u/m never hinged copy showing the WATERMARK INVERTED variety. SG 66w.	£120
471	1935 KGV Silver Jubilee 6d green & orange in an u/m never hinged left-hand marginal block of twelve (4x3) with the first and fourth vertical rows all showing the NARROW "N" in "KING" variety. SG 71,71a x6.	£90

PLEASE POST YOUR BIDS EARLY - ON A TIED BID THE FIRST ONE RECEIVED WILL WIN.
--

NEW ZEALAND - ROSS DEPENDENCY

Lot	Description	Est.
472	1967 QEII 'Decimal Currency' set in u/m never hinged SE corner Plate blocks of six. SG 5-8.	£220
473	1967 3c carmine-red. An u/m never hinged copy showing the WATERMARK INVERTED. SG 6w.	£70

NEW ZEALAND - VICTORIA LAND

Lot	Description	Est.
474	1913 1d carmine overprinted "VICTORIA LAND." An u/m never hinged lower marginal block of four with the lower left-hand copy showing the 'Q' FLAW variety. Row 10/19 Plate 13. SG A3,A3b.	£675

NIGERIA - BIAFRA

Lot	Description	Est.
475	BIAFRA - 1968 "Crown Bird" 1s3d multicoloured. A superb left-hand marginal copy showing RED OVERPRINT OMITTED resulting in Coat of Arms and Bars through "Nigeria" missing. SG 12b.	£280
476	BIAFRA - 1968 "Kobs" 2s6d orange-brown, buff & brown. A superb u/m never hinged copy showing RED OVERPRINT OMITTED resulting in Coat of Arms and Bars through "Nigeria" missing. SG 13a.	£225
477	1968 'First Anniversary of Independence' 5s multicoloured. An u/m never hinged copy showing the error INDIGO (BANKNOTE) OMITTED variety. Comes with normal for comparison. SG 20,20a.	£80

NIGERIA - NIGER COAST / OIL RIVERS

Lot	Description	Est.
478	1894 QV ½d on 2½d blue Old Calabar provisional. A very fine used copy cancelled by a complete squared OLD CALABAR cds in black dated AU 16 '94 code A. Position # 6 from the setting of 8. SG 65.	£185
479	1894 QV ½d on 2½d blue Old Calabar provisional. A very fine used copy cancelled by two partial squared OLD CALABAR cds in black dated OC 24 '94 code B. Position # 3 from the setting of 8. SG 65.	£185

NORTH BORNEO / SABAH

Lot	Description	Est.
480	1916 2c on 3c black & rose-lake. An u/m never hinged block of nine with the centre right copy showing the "s" in "cents" INVERTED variety. Row 2/5. SG 186,186a.	£280
481	1916 4c on 6c black & olive-green. An u/m never hinged block of six (3x2) with the top right-hand copy showing the "s" in "cents" INVERTED variety. Row 2/5. Block with slightly 'dried' gum. SG 187,187a.	£200

ALL LOTS ARE OFFERED ON A 'NO QUIBBLE, FULLY REFUNDABLE BASIS.'

NORTH BORNEO / SABAH

Lot	Description	Est.
482	1916 10c on 12c black & deep blue. An u/m never hinged block of nine with the centre right copy showing the "s" in "cents" INVERTED variety. Row 2/5. SG 188,188a.	£550
483	1918 24c + 2c mauve "RED CROSS" issue in an u/m never hinged NE corner block of four. SG 226.	£95
484	1947 KGV Royal Cypher set of fifteen very fine mint perforated SPECIMEN. Samuel Type W9. SG 335s-349s.	£260
485	1948 KGV Silver Wedding set in superb u/m never hinged marginal blocks of four. SG 350-351.	£104
486	1948 KGV Silver Wedding set of two in u/m never hinged SE corner Plate blocks of four. Hinged in the margin only. SG 350-351.	£130
487	1961 QEII \$1 brown & yellow-green 'Orang-Utan' in a superb u/m never hinged SE corner Plate1 block of four. SG 403.	£95

NORTHERN RHODESIA / ZAMBIA

Lot	Description	Est.
488	1935 KGV Silver Jubilee 3d brown & deep blue. A very fine mint copy showing the DIAGONAL LINE BY TURRET variety. Row 10/1 & 10/2 Plate 2A. SG 20f.	£200
489	1946 KGV Victory 1½d orange perf 13½ in an u/m never hinged SW corner CURRENT #75A block of six. SG 46a.	£80
490	1963 QEII 3d yellow. A superb u/m never hinged copy showing the error VALUE OMITTED variety. SG 78a.	£90
491	1963 QEII 4d green. A superb u/m never hinged copy showing the VALUE OMITTED variety. SG 79a.	£105
492	1963 QEII 20s blue. A superb u/m never hinged copy showing the error VALUE OMITTED variety. Only three sheets printed in error. Scarce. SG 88a.	£975

NYASALAND / BCA / MALAWI

Lot	Description	Est.
493	1913-19 KGV 2s6d black & red/blue. A very fine mint copy showing the NICK IN TOP RIGHT SCROLL variety. Row 3/12. SG 94c.	£180
494	1926 KGV 10s green & red/pale emerald. A very fine mint example showing the BREAK IN SCROLL variety. Row 1/12. Scarce. SG 113a.	£400
495	1935 KGV Silver Jubilee complete set of four in very fine mint lightly hinged (barely a trace) marginal blocks of four. All are very lightly hinged in the margin and the 1d value with one stamp just touched by a trace of hinge and the 1s value with two stamps just touched by traces of hinge, all barely noticeable. SG 123-126.	£150

NYASALAND / BCA / MALAWI

Lot	Description	Est.
496	1935 KGV Silver Jubilee 2d green & indigo. A very fine mint copy showing the "BIRD" BY TURRET variety. Row 1/5 Plate 7. SG 124m.	£170
497	1935 KGV Silver Jubilee 1s slate & purple. A very fine mint copy showing the KITE & VERTICAL LOG variety. Row 10/6 Plate 2A. Scarce on this value. SG 126k.	£300
498	1938-44 KGVI £1 purple & black/red in an u/m never hinged SE corner Plate 1 block of four. SG 143.	£240
499	1948 KGVI Silver Wedding set of two in u/m never hinged blocks of four, the 1d value being a SE corner Plate 1 block and the 10s value being a lower marginal BRADBURY WILKINSON imprint block of four. SG 161-162.	£70

ORANGE FREE STATE

Lot	Description	Est.
500	1900 6d blue. A very fine mint top marginal copy which was PREPARED FOR USE BUT UNISSUED. See footnote after SG 87.	£48
501	1896 ½d on 3d ultramarine. A very fine mint block of four with three copies showing the DOUBLE SURCHARGE variety. Bottom pair u/m never hinged. SG 70,75a x 3.	£40
502	1896 ½d on 3d ultramarine. An u/m never hinged gutter pair with MISPLACED SURCHARGE showing the BAR AT TOP variety. SG 77 var.	£15
503	1900 "British Occupation" ½d on ½d orange. A very fine mint block of four with the top left-hand copy showing "½" OMITTED variety. Row 7/5. SG 101, 101c.	£155
504	1900 "British Occupation" ½d on ½d orange. A very fine mint copy showing the VALUE OMITTED variety. RPSL Certificate (1953). SG 101f.	£90
505	1900 "British Occupation" 1d on 1d purple. A very fine mint horizontal pair with the right-hand copy showing the "I" AND STOP AFTER "R" OMITTED variety. Row 2/3. SG 102,102g.	£210
506	1900 "British Occupation" 1d on 1d deep brown ERROR OF COLOUR. A very fine mint lightly hinged copy of this scarce stamp. SG 102a.	£450
507	1900 "British Occupation" 2½d on 3d ultramarine. A very fine mint copy showing NO STOP AFTER "V" variety. Row 10/3. SG 104a.	£70
508	1900 "British Occupation" 6d on 6d bright carmine. A very fine mint horizontal pair with the right-hand copy showing the NO STOP AFTER "V" variety. Row 10/3. SG 108,108a.	£220
509	1900 "British Occupation" 6d on 6d ultramarine. A very fine mint horizontal strip of three with the centre copy showing "6" OMITTED variety. Row 7/5. SG 109,109b.	£85
510	1900 "British Occupation" 1s on 1s brown. A very fine mint horizontal pair with the right-hand copy showing the RAISED STOP AFTER "S" variety. Row 1/5, 6/6, 7/2. SG 110,110g.	£25

NOTE - THERE IS NO BUYERS PREMIUM OR HANDLING CHARGES.

ORANGE FREE STATE

Lot	Description	Est.
511	1900 "British Occupation" ½d on ½d orange. A very fine mint horizontal pair with the right-hand copy showing RAISED AND LEVEL STOPS MIXED and also shows the SMALL "½" variety. Row 10/6, fourth setting. SG 112,112g.	£75
512	1900 "British Occupation" 1d on 1d purple. A very fine mint horizontal pair with the left-hand copy showing NO STOP AFTER "R" variety and the right-hand copy showing THICK "V" variety. SG 113d,124.	£20
513	1900 "British Occupation" 3d on 3d ultramarine. A very fine used pair - the left-hand copy with RAISED STOPS and the right-hand copy showing LEVEL STOPS. SG 117b.	£18
514	1900 "British Occupation" 6d on 6d bright carmine. A very fine mint copy showing RAISED AND LEVEL STOPS MIXED. The stop is raised after "R". SG 119a.	£105
515	1900 "British Occupation" 1s on 1s brown in a very fine mint block of four with the lower left-hand copy showing THICK "V" variety. SG 121,131.	£75
516	1903-4 KEVII 1d scarlet. A very fine used copy showing the WATERMARK INVERTED. Scarce. SG 140w.	£50
517	1903-04 KEVII 4d scarlet & sage-green. A very fine mint copy showing the "IOSTAGE" for "POSTAGE" variety. Row 10/2 upper left pane. SG 144a.	£900

PAPUA

Lot	Description	Est.
518	1910 Official "Lakatoi" 1s black & orange Perf 12½. A very fine used CTO (Cancelled to order) SW corner block of six with the top right-hand copy showing the "RIFT" IN CLOUDS variety. Row 5/3. See footnote in Gibbons under SG 83. SG O26, O26 var.	£250
519	1932 "Lakatoi" Official 9d lilac & violet in a superb NW corner block of four with the top right-hand copy showing the LIGHTNING FLASH variety. Row 1/2. SG O63,O63 var.	£150
520	1910 "Lakatoi" 1s black & orange watermark sideways perf 12½ in a fine mint NE corner block of nine. SG 71.	£140
521	1913 "Lakatoi" 2d black & dull purple. A very fine used horizontal pair individually cancelled with the right-hand copy showing 'C' FOR 'O' IN POSTAGE variety. Row 4/3. SG 77,77a.	£110
522	1911 "Lakatoi" 2s6d black & brown Gibbons Type C with thin even stroke in '2/6' in a complete u/m never hinged sheet of thirty (well centered). Two small tone spots in top right-hand margin. A rare sheet. SG 83 cat £2250 for singles.	£1,600
523	1919 "Lakatoi" ½d myrtle & apple green Harrison printing. A very fine mint IMPERF PLATE PROOF on ungummed watermarked paper. SG 93 var.	£85
524	1927 "Lakatoi" 4d light brown & orange in a superb u/m never hinged block of four. Ex larger 'JOHN ASH' imprint block of eleven. SG 99a.	£110

NOTE - RESERVES ARE NORMALLY 80%-90% OF THE ESTIMATED PRICES.

PAPUA

Lot	Description	Est.
525	1917 "Lakatoi" 1d on ½d yellow-green Watermark Crown to right of A in an u/m never hinged complete sheet of forty with "JBC" and "CA" monograms in lower margin. SG 106w.	£300
526	1917 "Lakatoi" 1d on 2d bright mauve. A very fine mint lightly hinged copy showing the WATERMARK CROWN TO RIGHT OF 'A'. SG 107w.	£240
527	1935 KGV Silver Jubilee set of four in u/m never hinged JOHN ASH imprint complete sheets of forty. The 1d, 3d and 5d values show the "ACCENT" FLAW variety. Row 5/4. The 2d does not exist with this variety. SG 150-153, 150a, 152a, 153a.	£750
528	1935 KGV Silver Jubilee complete set of four in u/m never hinged blocks of four. Most are marginal blocks apart from the 3d value and the 2d value is a JOHN ASH Imprint block which is very lightly hinged in the margin only. SG 150-153.	£85
529	1935 KGV Silver Jubilee 5d black & slate-green. A very fine mint lower marginal Imprint copy showing the Row 5/4 "ACCENT" FLAW variety. SG 153a.	£75
530	1938 KGVI complete set of five in very fine mint SW corner JOHN ASH imprint blocks of four. One stamp in each block hinged. SG 158-162.	£120

PAPUA & NEW GUINEA

Lot	Description	Est.
531	1960 Postage Due 6d on 7½d blue. An u/m never hinged example showing the error SURCHARGE DOUBLE variety. BPA Certificate (2015). SG D4a.	£900
532	1964-65 'Ptiloris Magnificus' 10s pale drab. A superb u/m never hinged copy overprinted SPECIMEN. SG 71s.	£65

PITCAIRN ISLANDS

Lot	Description	Est.
533	1940-51 KGVI 4d black & emerald-green in a very fine used lower marginal BRADBURY WILKINSON Imprint Plate 1 block of six. SG 5b.	£70
534	1957-63 QEII 1d "Pitcairn Island Map" in the three listed shades, black & olive-green, black & yellow-olive and black & light olive-green, all three shades u/m never hinged. SG 19,19a,19b.	£70

RHODESIA / ZIMBABWE

Lot	Description	Est.
535	1970-73 Postage Due 2c ultramarine PRINTED ON THE GUMMED SIDE in a superb u/m never hinged left-hand marginal block of four. SG D19a.	£140
536	1909 "Arms" 5s orange. A very fine mint copy showing NO STOP AFTER "RHODESIA" variety. SG 110a.	£135

RHODESIA & NYASALAND

Lot	Description	Est.
537	1954 QEII set (excluding SG 3a which was issued in February 1956) superb used on five illustrated First Day Covers cancelled Cholo 1 JUL '54. SG 1-15 excluding SG 3a.	£95
538	1962 QEII set (excluding SG 24a which was issued in May 1962) superb used on four illustrated First Day Covers cancelled Salisbury 12 AUG '59. SG 18-31 excluding SG 24a.	£150

SAMOA

Lot	Description	Est.
539	1914 KGV ½d on 3pf brown. An u/m never hinged example showing the "1" TO LEFT OF "2" IN "½" variety. SG 101d.	£70
540	1921 "Native Hut" 1d lake perf 14x14½ in an u/m never hinged left-hand marginal block of six (3x2) with the lower left copy showing "DOUBLING OF DESIGN". Row 1/6. Recorded in the NZ handbook Volume 5 Page 631. SG 150,150 var.	£75
541	1935 "Apia" 1d black & carmine. An u/m never hinged copy showing the WATERMARK INVERTED. SG 181w.	£75
542	1940 'Samoan Chief' 3d on 1½d brown. An u/m never hinged copy MISSING SURCHARGE. No gum as issued. See footnote in Gibbons. SG 199 var.	£150

SARAWAK

Lot	Description	Est.
543	1892 "Sir Charles Brooke" 5c on 12c green & blue. A very fine mint copy showing NO STOP AFTER "C" variety. SG 26a.	£140
544	1918 Sir Charles Vyner Brooke 1c PREPARED FOR USE BUT NOT ISSUED. Two u/m never hinged blocks of four in contrasting shades, slate-blue & slate and pale slate-blue & slate. SG 62, 62 var.	£150
545	1945 B.M.A. 15c blue in an u/m never hinged lower marginal BRADBURY WILKINSON Imprint block of eight. SG 135.	£80
546	1947 KGVI complete set of fifteen overprinted with Type 24 in superb u/m never hinged blocks of four. SG 150-164.	£75

SEYCHELLES

Lot	Description	Est.
547	1890-92 QV complete set of eight very fine mint overprinted SPECIMEN. Samuel type D12. Odd gum crease but a very fresh looking set nevertheless. SG 1s-8s.	£170
548	1893 QV 3c on 4c carmine & green. A very fine mint example showing the SURCHARGE DOUBLE variety. BPA Certificate (1951). SG 15b.	£360
549	1897-1900 QV 15c ultramarine. A very fine used copy showing the REPAIRED "S" variety. Row 7/3 left pane Plate 2. Scarce. SG 30a.	£300

SEYCHELLES

Lot	Description	Est.
550	1903 KEVII 2c chestnut & green. A very fine mint copy showing the DENTED FRAME variety. Row 1/6 left pane. SG 46a.	£120
551	1903 KEVII complete set of eleven very fine mint overprinted SPECIMEN. Samuel Type D12. SG 46s-56s.	£180
552	1904 KEVII 1r50 black & carmine. A very fine used copy showing the DENTED FRAME variety. Row 1/6 left pane. Scarce. SG 55a.	£825
553	1906 KEVII 6c carmine. A very fine used copy showing the DENTED FRAME variety. Row 1/6 left pane. SG 62a.	£100
554	1906 KEVII 12c olive-sepia & dull green. A very fine mint copy showing the DENTED FRAME variety. Row 1/6 left pane. SG 63a.	£210
555	1935 KGV Silver Jubilee 20c brown & deep blue in an u/m never hinged block of four with the lower left-hand copy showing the SHORT EXTRA FLAGSTAFF variety. Row 2/1 Plate 2. SG 130,130b.	£260
556	1938-49 KGV 2c purple-brown on Chalk-surfaced paper in an u/m never hinged SE corner Plate 2 block of four. SG 135.	£10
557	1952 KGV 2c lilac "Sail Fish". An u/m never hinged top marginal block of twelve (4x3) showing the ST. EDWARD'S CROWN WATERMARK ERROR on second stamp from left on top row. SG 158,158b.	£110
558	1952 KGV 3c orange "Giant Tortoise". An u/m never hinged NW corner block of eight (4x2) showing the ST. EDWARD'S CROWN WATERMARK ERROR between stamps on Row 1/4 & 2/4. SG 159,159b.	£140
559	1952 KGV 45c purple-brown. A very fine mint copy with ST. EDWARD'S CROWN WATERMARK ERROR. SG 166b.	£300
560	1957 QEII 5c violet 'Flying Fox' in a superb u/m never hinged SE corner Plate 1A block of four. SG 175a.	£20
561	1957 QEII 5c violet 'Flying Fox' in a superb u/m never hinged SE corner Plate 1B block of four. SG 175a.	£20
562	1954-61 QEII 20c orange-yellow 'Fishing Pirogue' in a superb u/m never hinged SE corner Plate 1 block of four. SG 179.	£10
563	1956 QEII 35c crimson 'Map' in a superb u/m never hinged SE corner Plate 1 block of four. SG 180a.	£40

SIERRA LEONE

Lot	Description	Est.
564	1884-91 QV 2d grey Perf 12. A very fine mint copy overprinted SPECIMEN. Samuel Type D12. Cat. £2500 for the P12 set of four. Scarce. SG 30sa.	£475
565	1893 QV ½d on 1½d pale violet Wmk Crown CA. A very fine mint copy showing the "PFNNY" variety. Row 3/1. SG 39b.	£65
566	1935 KGV Silver Jubilee 1d ultramarine & grey-black in an u/m never hinged lower marginal block of four with the top left copy showing the EXTRA FLAGSTAFF variety. Row 9/1 Plate 1. Hinged once in margin. SG 181,181a.	£65

SIERRA LEONE

Lot	Description	Est.
567	1935 KGV Silver Jubilee 3d brown & deep blue. A very fine mint block of four with the top left-hand copy showing the EXTRA FLAGSTAFF variety. Row 9/1 Plate 1. SG 182,182a.	£100
568	1935 KGV Silver Jubilee 5d green & indigo in a very fine mint block of four with the top left-hand copy showing the EXTRA FLAGSTAFF variety. Row 9/1 Plate 1. SG 183,183a.	£145
569	1963 QEII "Second Anniversary of Independence" 3d on ½d black & deep lilac in an u/m never hinged NW corner block of twenty (4x5). All four stamps on the lower row show the NARROW SETTING variety - Row 5/1-4. SG 257,257b x4.	£28
570	1963 QEII "Second Anniversary of Independence" 3d on ½d black & deep lilac in an u/m never hinged top marginal block of twenty-five (5x5). All five stamps on the lower row show the NARROW SETTING variety - Row 5/1-5. SG 257,257b x5.	£30
571	1963 QEII "Second Anniversary of Independence" 4d on 1½d black & ultramarine in an u/m never hinged top marginal block of twenty-five (5x5). All five stamps on the lower row show the NARROW SETTING variety - Row 5/1-5. SG 258,258b x5.	£30
572	1963 QEII "Second Anniversary of Independence" 6d on ½d black & deep lilac in an u/m never hinged NW corner block of twenty (4x5). All four stamps on the lower row show the NARROW SETTING variety - Row 5/1-4. SG 259,259b x4.	£28

SOLOMON ISLANDS

Lot	Description	Est.
573	1913 KGV set of four inscribed "POSTAGE POSTAGE" all very fine mint overprinted SPECIMEN. Samuel Type D12. SG 18s-21s.	£65
574	1922-31 KGV complete set of fifteen overprinted or perforated SPECIMEN. Samuel Types D12, D16, D19. SG 39s-52s.	£360
575	1935 KGV Silver Jubilee 1½d deep blue & carmine. A very fine used copy showing the DIAGONAL LINE BY TURRET variety. Row 10/1 & 10/2 Plate 2A. SG 53f.	£75
576	1935 KGV Silver Jubilee 3d brown & deep blue. A very fine mint copy showing the DIAGONAL LINE BY TURRET variety. Row 10/1 & 10/2 Plate 2A. SG 54f.	£120
577	1946 KGVI Victory set of two very fine mint perforated SPECIMEN. Samuel Type D21. Certified as genuine. SG 73s-74s.	£85
578	1966-67 QEII 'Decimal Currency' set of fifteen in superb u/m never hinged SE corner Cylinder blocks of eight. SG 135A-152A.	£100
579	2006 "Shells" complete set of fourteen in superb u/m never hinged Cylinder blocks of four. SG 1202-1215.	£90

NOTE - THERE IS NO BUYERS PREMIUM OR HANDLING CHARGES.
--

SOMALILAND

Lot	Description	Est.
580	1904-05 KEVII Official 2a dull & bright purple. A very fine mint copy overprinted SPECIMEN and shows the NO STOP AFTER "M" variety. A rarity with only 3 or 4 copies possible. Cat £3,250 unoverprinted Specimen. SG O12as.	£2,750
581	1903 KEVII ½a green SERVICE stamp. A very fine mint copy showing the MISSING "I" IN "BRITISH" variety. Row 7/12 upper pane. SG O6a.	£70
582	1903 KEVII 1a carmine SERVICE stamp. A very fine mint copy showing the MISSING "I" IN "BRITISH" variety. Row 7/12 upper pane. SG O7a.	£70
583	1903 QV 1a carmine. A very fine used copy showing MISSING SECOND "I" IN "BRITISH" variety. Row 2/6 upper pane and Row 5/1 lower pane. SG 2a.	£210
584	1903 QV 2a pale violet. A very fine mint copy showing MISSING SECOND "I" IN "BRITISH" variety. Row 2/6 upper pane and Row 5/1 lower pane. SG 3a.	£300
585	1903 QV 2½a ultramarine. A very fine mint lightly hinged horizontal pair with the left-hand copy showing 'BRIT SH' variety. Row 5/1 lower pane. SG 4,4a.	£550
586	1903 QV 6a olive-bistre. A very fine mint copy showing the "SOMAL.LAND" overprint variety. Row 7/5 lower pane. SG 19b.	£170
587	1903 QV 12a purple/red. A very fine mint example showing the "SUMAL.LAND" overprint variety. Row 7/5 lower pane. SG 20c.	£280
588	1903 QV 1r green & aniline carmine. A very fine mint example showing the "SUMALILAND" overprint variety. Row 2/9 upper pane. SG 21b.	£350
589	1903 KEVII 1a carmine in a very fine mint horizontal pair with the right-hand copy showing the MISSING "I" IN "BRITISH" variety. Row 7/12 upper pane. SG 26,26a.	£260
590	1912-19 KGV 3a chocolate & grey-green. A very fine used copy showing the WATERMARK INVERTED. Scarce. UNPRICED USED by Gibbons. SG 64w.	£150
591	1935 KGV Silver Jubilee 1a deep blue & scarlet. A superb u/m never hinged copy showing the BIRD BY TURRET variety. Row 1/5 Plate 7. SG 86m.	£130
592	1935 KGV Silver Jubilee 2a ultramarine & grey in an u/m never hinged vertical pair, the lower copy showing the KITE & VERTICAL LOG variety. Row 10/6 Plate 2A. SG 87,87k.	£110
593	1951 KGVI 'New Currency' 2s on 2r purple in an u/m never hinged lower marginal WATERLOW & SONS Imprint block of four. SG 133.	£20
594	1951 KGVI 'New Currency' 2s on 2r purple in an u/m never hinged SE corner Plate 1 block of four. SG 133.	£30
595	1951 KGVI 'New Currency' 2s on 3r bright blue in an u/m never hinged SE corner Plate 1 block of four. SG 134.	£85
596	1951 KGVI 'New Currency' 5s on 5r black in an u/m never hinged lower marginal WATERLOW & SONS Imprint block of four. SG 135.	£100
597	1951 KGVI 'New Currency' 5s on 5r black in an u/m never hinged SE corner Plate 1 block of four. SG 135.	£120

NOTE - RESERVES ARE NORMALLY 80%-90% OF THE ESTIMATED PRICES.

SOUTH AFRICA

Lot	Description	Est.
598	1927-28 Postage Due IMPERFORATE FRAME PLATE PROOF in carmine (colour of issued 1d) in an u/m never hinged block of four on gummed, un-watermarked paper. As Type SG D18 var.	£250
599	1944-50 Official 1½d blue-green & yellow buff Official stamp overprinted with Type O2 (reading downwards with 'OFFICIAL' at right). A very fine used bilingual pair showing DIAERESIS OVER SECOND "E" IN 'OFFISEEL' variety. SG O33a.	£360
600	1937 KGV Coronation set of five very fine used on two Registered First Day Covers addressed to England. The 1s value shows the HYPHEN ON AFRIKAANS STAMP OMITTED variety. Row 2/13. SG 71-75, 75a.	£75
601	1947-54 3d blue in an u/m never hinged SW corner bilingual block of five with one copy showing the "FLYING SAUCER" variety. Row 17/2 Cylinder 17. One normal stamp with tiny tone spot. SG 117a,117ab.	£80

SOUTH WEST AFRICA / NAMIBIA

Lot	Description	Est.
602	1923 Postage Due 5d black & violet. A very fine mint horizontal pair with the left-hand copy showing "Afrika" WITHOUT STOP variety. Row 6/1. SG D1b.	£105
603	1923-26 Postage Due 1d black & rose in an u/m never hinged bilingual block of twelve (6 pairs), one pair showing the NO STOP AFTER "AFRICA" variety. Row 9/5 right pane. SG D28,D28a.	£70
604	1923 Postage Due 6d black & slate in a very fine mint right-hand marginal block of four with the lower right-hand copy showing "WES" FOR "WEST" variety. Row 8/6. Bottom pair including variety u/m never hinged. SG D5, D5a.	£325
605	1931 Postage Due 6d black & slate in a very fine used block of four and cancelled with a "WINDHOEK" postmark. SG D51.	£70
606	1927-30 6d green & orange. A very fine mint bilingual pair showing the NO STOP AFTER "A" variety. Row 1/7 & 13/4. SG 63a.	£90
607	1927-30 2s6d green & brown. A very fine mint bilingual pair showing the NO STOP AFTER "A" variety. Row 1/7 & 13/4. SG 65a.	£120
608	1927-30 "Table-Bay" 10s bright blue & brown. A fine used pair with the left-hand copy showing the Row 8/1 NO STOP AFTER "A" variety. SG 67a.	£450
609	1941-43 "Womans Auxiliary Services" 3d blue. A very fine mint bilingual pair with the right-hand copy showing the "CIGARETTE" FLAW variety. Row 18/2. SG 117a.	£75

SOUTHERN RHODESIA

Lot	Description	Est.
610	1947 KGV Victory 2d slate in an u/m never hinged NE corner block of four. The top right-hand copy shows DAMAGE TO RIGHT-HAND FRAME variety. Row 1/10. Scarce. SG 65,65b.	£280

ST HELENA

Lot	Description	Est.
611	1913 KGV 4d black & red/yellow and 6d dull & deep purple on ordinary paper. A very fine mint set of two overprinted SPECIMEN. Samuel Type D12. SG 85s-86s.	£110
612	1922-37 KGV 4d grey & black/yellow "Badge" issue. A very fine mint copy showing the Row 5/1 CLEFT ROCK variety. SG 92c.	£185
613	1922-37 KGV 1s6d grey & green/blue-green "Badge" issue. A very fine mint very lightly hinged copy showing the Row 4/6 TORN FLAG variety. SG 93b.	£420
614	1922-37 KGV ½d grey & black "Badge" issue. A very fine mint copy showing the Row 4/6 TORN FLAG variety. SG 97b.	£190
615	1922-37 KGV 1½d rose-red "Badge" issue. A very fine mint left marginal pair with the left-hand copy showing the Row 2/1 BROKEN MAINMAST variety. SG 99,99a.	£75
616	1922-37 KGV 1½d rose-red "Badge" issue. A very fine mint copy showing the Row 5/1 CLEFT ROCK variety. SG 99c.	£70
617	1922-37 KGV 2d grey & slate "Badge" issue. A very fine used example showing the Row 5/1 CLEFT ROCK variety. SG 100c.	£90
618	1922-37 KGV 3d bright blue "Badge" issue. A very fine mint copy showing the Row 5/1 CLEFT ROCK variety. SG 101c.	£90
619	1922-37 KGV 8d grey & bright violet "Badge" issue. A very fine mint example showing the Row 5/1 CLEFT ROCK variety. SG 105c.	£135
620	1922-37 KGV 1s grey & brown "Badge" issue. A very fine mint lightly hinged example showing the Row 4/6 TORN FLAG variety. SG 106b.	£375
621	1927 KGV 5s grey & green/yellow "Badge" issue. A very fine mint copy showing the Row 5/1 CLEFT ROCK variety. SG 110c.	£560
622	1935 KGV Silver Jubilee 1½d deep blue & carmine. A very fine mint copy showing the DIAGONAL LINE BY TURRET variety. Row 10/1 & 10/2 Plate 2A. SG 124f.	£75
623	1935 KGV Silver Jubilee 2d ultramarine & grey. An u/m never hinged copy showing the DIAGONAL LINE BY TURRET variety. Row 10/1 & 10/2 Plate 2A. SG 125f.	£140
624	1935 KGV Silver Jubilee 1s slate & purple. A very fine mint lightly hinged copy showing DOT BY FLAGSTAFF variety. Row 8/4 Plate 4. SG 127h.	£700
625	1983 QEII 'Birds' issue. Sixteen IMPERFORATE PROOFS produced by The House of Questa (Running Proof / Proofs) neatly stuck down inside three separate A5 folders, with notes from designers/printers regarding changes to the images, from early design concept to final issue - all signed 'Janice Smith'. Ex House of Questa. UNIQUE! SG 419-422 var.	£350

ST KITTS-NEVIS

Lot	Description	Est.
626	1937 KGVI Coronation set of three very fine mint perforated SPECIMEN. Samuel Type D20. SG 65s-67s.	£70

ALL LOTS ARE OFFERED ON A 'NO QUIBBLE, FULLY REFUNDABLE BASIS.'

ST KITTS-NEVIS

Lot	Description	Est.
627	1938-50 KGVI 1s black & green perf 14. A very fine mint copy showing the BREAK IN VALUE TABLET FRAME variety. Row 3/2. SG 75ba.	£85
628	1950 KGVI 5s green & scarlet-vermilion in an u/m never hinged NW corner Plate 1 block of four. Hinged in margin only. SG 77c.	£200
629	1954-63 QEII 1c deep green & ochre in an u/m never hinged WATERLOW & SONS Imprint Plate 1 block of ten from the bottom two rows of the sheet. SG 107.	£12
630	1954-63 QEII 2c in the two listed shades, green (Waterlow printing) and yellow-green (De La Rue printing), both shades in superb u/m never hinged SE corner Plate & Imprint blocks of eight. SG 108,108a.	£65

ST KITTS-NEVIS - NEVIS

Lot	Description	Est.
631	1882-90 QV 1d dull rose. A very fine used copy cancelled by SG Type CC1 Crowned Circle. SG Type CC1 cat £4500 on cover. SG 27.	£120
632	1882-90 QV complete set of two very fine mint overprinted SPECIMEN. Samuel Type D12. SG 33s-34s.	£85
633	1935 KGV Silver Jubilee complete set of four in u/m never hinged marginal blocks of four. SG 61-64.	£95

ST LUCIA

Lot	Description	Est.
634	1935 KGV Silver Jubilee 2½d brown & deep blue. A very fine mint copy showing the DOT TO LEFT OF CHAPEL variety. Row 8/3 Plate 2B. SG 111g.	£135
635	1938-48 KGVI 5s black & mauve. A very fine mint copy showing MOLE UNDER KING'S MOUTH variety. SG 137 var.	£20

ST VINCENT

Lot	Description	Est.
636	1902 KEVII complete set of nine very fine mint overprinted SPECIMEN. Samuel Type D12. SG 76s-84s.	£120
637	1937 KGVI Coronation set of three very fine mint perforated SPECIMEN. Samuel Type B9. SG 146s-148s.	£65
638	1947 KGVI 10s violet & brown. A superb used copy showing the WATERMARK INVERTED and cancelled with Kingston cds dated 31 JA '47. Rare. SG 158aw.	£3,250

SUDAN

Lot	Description	Est.
639	1948 "Gunboat Zafir" Postage Due set of four in superb u/m never hinged blocks of four. SG D12-D15.	£152

SUDAN

Lot	Description	Est.
640	1936-46 Official 2m orange & chocolate on chalk-surfaced paper in a superb u/m never hinged lower marginal block of four. KGVI Certificate (2006). SG O33a.	£375
641	1948 Official 4p ultramarine & black perf 13 in an u/m never hinged SE corner Frame Plate 1 Vignette Plate 2 block of four. SG O52a.	£65
642	1948 Official 4p ultramarine & black perf 13 in an u/m never hinged NW corner Frame Plate 1 Vignette Plate 2 block of six. Hinged in top margin only. SG O52a.	£100
643	1951-60 Official 3p the two listed shades, brown & dull ultramarine and brown & deep blue, both copies superb u/m never hinged. SG O75,O75a.	£55
644	1921-23 'Camel' complete set of seven in Plate 1 blocks of four (a mixture of corner, lower and upper marginal blocks). Most blocks very fine mint lightly hinged, two u/m never hinged (except margin). SG 30-36.	£140
645	1921-23 'Camel' 2m yellow-orange & chocolate in an u/m never hinged NE corner Plate 1 block of six. Hinged in margin only. SG 31.	£65
646	1927-41 'Camel' 3p red-brown & blue on ordinary paper in an u/m never hinged NW corner Plate 4 block of four. Hinged in margin only. SG 44ba.	£100
647	1931-37 "Statue of Gen. Gordon" 15m red-brown & sepia perf 14. An u/m never hinged SW corner DE LA RUE imprint block of six showing the WATERMARK SIDEWAYS INVERTED. Scarce multiple in this condition. SG 52aw.	£1,300
648	1940 5m on 10m carmine & black in an u/m never hinged lower marginal block of twelve. The bottom left-hand copy shows the BROKEN "LAM" variety. Row 6/2 Right-hand pane. SG 78,78d.	£80
649	1948 "Camel" 20p pale blue & deep blue in an u/m never hinged SE corner Frame Plate 1 Vignette Plate 2 block of four. SG 110a.	£150

SWAZILAND / ESWATINI

Lot	Description	Est.
650	1935 KGV Silver Jubilee 2d ultramarine & grey-black in a very fine mint block of four with the top right-hand copy showing the EXTRA FLAGSTAFF variety. Row 9/1 Plate 1. SG 22,22a.	£110
651	1935 KGV Silver Jubilee 3d brown & deep blue in a very fine mint SW corner block of four with the top left-hand copy showing the EXTRA FLAGSTAFF variety. Row 9/1 Plate 1. SG 23,23a.	£85
652	1938-54 KGVI 3d ultramarine Perf 13½x13 in an u/m never hinged SE corner Plate 1 block of four. SG 32.	£50
653	1946 KGVI 3d light ultramarine Perf 13½x14 in an u/m never hinged SE corner Plate 1 block of four. SG 32c.	£110
654	1947 KGVI 3d deep blue Perf 13½x14 in an u/m never hinged SE corner Plate 1 block of four. SG 32d.	£80

NOTE - THERE IS NO BUYERS PREMIUM OR HANDLING CHARGES.
--

SWAZILAND / ESWATINI

Lot	Description	Est.
655	1961 QEII 25c on 2s6d emerald & carmine-red. Three u/m never hinged examples showing the three surcharge types. SG 74,74a,74b. Only 10 sheets (600 copies) issued of SG 74b.	£730
656	1968 QEII 3c on 5c black, red & orange-red 'Long-tailed Whydah' in a superb u/m never hinged NE corner block of four showing the WATERMARK INVERTED variety. SG 136w.	£26
657	1968 QEII 'Independence' ½c black, brown & yellow-brown 'Swazi Shields' in a superb u/m never hinged lower marginal block of four showing the error ALBINO OVERPRINT variety. SG 142b.	£150

TOGO

Lot	Description	Est.
658	1914 KGV 1d on 5pf green. A very fine mint copy showing the "TOG" error. The error is believed to have occurred when the spacing of the overprint was changed from 3mm to 2mm to accommodate more easily the value surcharge and as a result the "O" was accidentally left out. SG H28a.	£100
659	1915 KGV ½d green in an u/m never hinged right-hand marginal block of eighteen (6x3) - Stamps 25-42. One copy in the top row shows the NO HYPHEN AFTER "ANGLO" variety (Position #28) and one stamp on the middle row shows the "CUPATION" FOR "OCCUPATION" variety (Position #33). SG H34,H34c, H34e.	£130
660	1915 KGV 1d red. A very fine mint copy showing the OVERPRINT INVERTED. SG H35h.	£135
661	1915 KGV 3d purple/yellow (white back). A very fine used copy showing the SMALL "F" variety. Position # 25,58 & 59. SG H38ga.	£65
662	1915 KGV 2s purple & blue/blue. A very fine mint copy showing THIN "G" IN "TOGO" variety. Stamp #24 and shows DIAGNOSTIC FLAWS - MISSING CROSSBAR IN "A" OF "ANGLO" & THICK HYPHEN. SG H42b.	£75
663	1916-20 KGV 1s in three of the four listed shades as per Gibbons, black/green, black on blue-green (olive back) and black on emerald-green (emerald-green back), all three shades very lightly mounted mint. The latter shade is scarce! SG H53, H53a, H53c.	£360

TONGA

Lot	Description	Est.
664	1892 6d red on white wove paper with linin inside & pointed flap stationery Registered Envelope Size H2 very fine unused. H&G C3a.	£65
665	1895 'King George II' 7½d orange-yellow perf 12. A very fine mint upper marginal block of four. Three stamps u/m never hinged. SG 35.	£110
666	1920-35 'Queen Salote' 2d agate & aniline violet (Die I) in a very fine mint upper marginal block of four. The top right copy shows the SMALL "2" variety. Lower pair hinged, variety u/m never hinged. SG 57,57b.	£75

NOTE - RESERVES ARE NORMALLY 80%-90% OF THE ESTIMATED PRICES.

TRANSJORDAN / JORDAN

Lot	Description	Est.
667	1939 Postage Due 1m red-brown perf 13½x13 in a superb u/m never hinged top marginal block of four. Scarce KGVI piece. SG D189a.	£360
668	1922 9p ochre. A very fine mint copy with violet overprint. BPA certificate. SG 44a.	£170
669	1925 ½p chocolate in an u/m never hinged IMPERF block of four. Ex Ledger. SG 135 var.	£80
670	1925 ¼p ultramarine in a very fine mint IMPERF block of four. Ex Ledger. SG 136 var.	£80
671	1925 ¼p ultramarine. A very fine mint SE corner IMPERF copy showing the OVERPRINT INVERTED variety. Ex Ledger. SG 136a var.	£75
672	1925 ½p carmine in a very fine mint IMPERF block of four. Ex Ledger. SG 137 var.	£80
673	1925 1½p orange in a very fine mint IMPERF block of four. Ex Ledger. SG 139 var.	£80
674	1925 2p blue in a very fine mint IMPERF block of four. Ex Ledger. SG 140 var.	£80
675	1925 3p sage-green. A very fine mint IMPERF copy showing the OVERPRINT INVERTED variety. Ex Ledger. SG 141b var.	£100
676	1925 5p chestnut in a very fine mint IMPERF block of four. Hinged in margin. Ex Ledger. SG 142 var.	£80

TRINIDAD & TOBAGO

Lot	Description	Est.
677	1945 Postage Due 1s black. A very fine mint example showing the UPRIGHT STROKE variety found on vertical column five. SG D25a.	£100
678	1947-61 Postage Due set of eight superb u/m never hinged perforated SPECIMEN. Samuel Type D21. KGVI Certificate (2011). SG D26s-D33s.	£110
679	1935 KGV Silver Jubilee complete set in superb u/m never hinged marginal blocks of four. The 24c block shows TWO VERTICAL PARALLEL LINES EITHER SIDE OF CURFEW TOWER variety - Row 9/2 Plate 3. SG 239-242.	£80
680	1935 KGV Silver Jubilee complete set fine mint perforated SPECIMEN. Samuel Type B9. SG 239s-242s.	£85
681	1935 KGV Silver Jubilee 6c brown & deep blue in a very fine mint SW corner block of four with the top left-hand copy showing the EXTRA FLAGSTAFF variety. Row 9/1 Plate 1. SG 241,241a.	£65
682	1937 KGVI Coronation complete set of three very fine mint perforated SPECIMEN. Samuel Type D20. SG 243s-245s.	£75
683	1948 KGVI Silver Wedding set of two in u/m never hinged lower marginal blocks of four, the 3c value being a Plate 1 block and the \$4.80 value being a BRADBURY WILKINSON imprint block. SG 259-260.	£120

PLEASE POST YOUR BIDS EARLY - ON A TIED BID THE FIRST ONE RECEIVED WILL WIN.
--

TRISTAN DA CUNHA

Lot	Description	Est.
684	1928 Envelope addressed to London bearing a very fine strike of the Type IV "TRISTAN DA CUNHA" double ring cachet in purple-red. Upon arrival in England a black "1½d TO PAY SEI" postage due cachet was applied and then the cover was affixed with GB ½d green and GB 1d carmine postage due stamps paying the amount due, each cancelled with an indistinct (London) cds dated 3 DE '28. The Tristan Da Cunha cachet is well clear and unobstructed. No postal markings on reverse. Scarce. SG C4 cat £850.	£650
685	1976 Postage Due 10p chestnut. A superb u/m never hinged copy showing the WATERMARK CROWN TO RIGHT OF 'CA'. SG D15w.	£90
686	1957 Postage Due 4d ultramarine. A very fine used copy showing the BROKEN "d" in value variety. From the 5th vertical row. UNPRICED USED in Gibbons. SG D4a.	£90
687	1986 QEII 25p multicoloured '60th Birthday of QEII' issue. A superb u/m never hinged copy showing the error SILVER (CYPHER & LOGO) OMITTED variety. Comes with normal for comparison. SG 408a.	£240

TURKS & CAICOS ISLANDS

Lot	Description	Est.
688	1935 KGV Silver Jubilee 6d light blue & olive-green. A very fine mint copy showing the KITE & VERTICAL LOG variety. Row 10/6 Plate 2A. SG 189k.	£75
689	1935 KGV Silver Jubilee 1s slate & purple. A very fine mint copy showing the KITE & VERTICAL LOG variety. Row 10/6 Plate 2A. SG 190k.	£75
690	1937 KGVI Coronation set of three very fine mint perforated SPECIMEN. Samuel Type D20. Certified as genuine. SG 191s-193s.	£70
691	1950 KGVI 5s blue & black 'Loading Salt' in an u/m never hinged lower marginal WATERLOW & SONS Imprint block of four. SG 232.	£100
692	1950 KGVI 10s black & violet 'Dependency Badge' in an u/m never hinged lower marginal WATERLOW & SONS Imprint block of four. SG 233.	£110

ZANZIBAR

Lot	Description	Est.
693	1952-55 "Sultan Khalifa" and "Seyyid Khalifa Schools" short set to 1r in superb DE LA RUE imprint blocks of eight. Each block very lightly hinged on one stamp only, rest u/m never hinged. SG 339-348.	£80

ZULULAND

Lot	Description	Est.
694	1888 QV £1 green Revenue Stamp. A very fine mint vertical IMPERF PLATE PROOF PAIR on gummed, watermarked paper. Lower copy u/m never hinged. Scarce. Barefoot 6 var.	£450
695	1894-96 QV £5 purple & black/red. A very fine mint lightly hinged copy overprinted SPECIMEN. Samuel Type D12. SG 29s.	£380



214



Ex 253



322



323



Ex 220



Ex 342



297



Ex 365



402



Ex 380



448



435



466



523



372



657



469



441



585



Ex 625



620



668



687



548



Ex 574



580



685



695