

Temple Bar Auctions

POSTAL SALE 135

Closing date for bids Friday 31st May 2024



553



Temple Bar Auctions

PO Box 1600, Wrington, Bristol BS40 5BD, England

Telephone: 01934 863656 (+44 1934 863656)

Email: BridgerKay@aol.com



Member of The Philatelic Traders Society



7



44



56



16



76



77



91



8



10



106



173



160



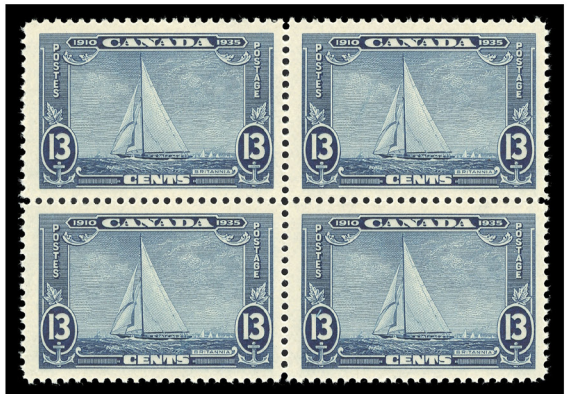
92



73



Ex 236



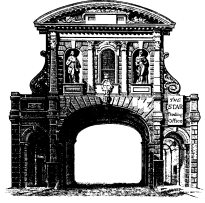
133

POSTAL BIDDING FORM

Temple Bar Auctions

PO Box 1600, Wrington, Bristol, BS40 5BD, England
Tel. 01934 863656 (+44 1934 863656)

Email: BridgerKay@aol.com www.bridgerkay.com VAT no. GB 567 7211 22



Please bid on my behalf on the lots listed below, up to the amounts indicated. I have read the conditions of sale and agree to abide by them.

Signed <i>(Bid sheet must be signed)</i>		Sale no.	OFFICE USE ONLY	
Name		Invoice No:		
Address		Proforma <input type="checkbox"/>	Sent <input type="checkbox"/>	
		Sub Total	£	
		First Class Post	£	
Post/Zip Code	Country	Special Delivery	£	
Tel. <i>Home</i>	<i>Mobile.</i>	Signed For	£	
Email		Registered Worldwide	£	
Special Instructions		Total	£	

Lot Number	Bid	Successful Bid	Lot Realised	Lot Number	Bid	Successful Bid	Lot Realised
		Please Leave Blank				Please Leave Blank	
	£	£	£		£	£	£
	£	£	£		£	£	£
	£	£	£		£	£	£
	£	£	£		£	£	£
	£	£	£		£	£	£
	£	£	£		£	£	£
	£	£	£		£	£	£
	£	£	£		£	£	£
	£	£	£		£	£	£
	£	£	£		£	£	£
	£	£	£		£	£	£
	£	£	£		£	£	£
	£	£	£		£	£	£
	£	£	£		£	£	£
	£	£	£		£	£	£
	£	£	£		£	£	£
	£	£	£		£	£	£
	£	£	£		£	£	£

Please tick method of payment

I authorise you to charge my Visa MasterCard Amex

Card Number

Expiry Date CVV2 Signature
(Security no.)

I AM an established Temple Bar Auction customer and will pay by the following on receipt of the lots and the invoice.

I AM NOT an established Temple Bar Auction customer and will pay by the following on receipt of your pro-forma invoice.

Cheque Bank Transfer Bank draft

(For further details of payment see overleaf).

CONDITIONS OF SALE

TERMS & CONDITIONS - The Philatelic Auctioneers Standard Terms and Conditions of sale apply, a copy of which is available on request. Placing a bid is your acceptance of these terms. Your statutory rights are not affected.

HOW TO BID - This is a **POSTAL AUCTION** and operates in the same way as any Public Auction except you do not need to attend our premises to take part. Simply enter on the Postal Bidding Form overleaf the maximum amounts you are prepared to pay for as many of the lots you wish to bid on and return it to us in the enclosed pre-paid envelope. **PLEASE REMEMBER TO SIGN THE BID FORM.** We will enter these bids on your behalf and buy at the lowest possible price subject to other bids received and reserves. For example:

On a lot estimated at £100 three bids are received. Buyer "A" bids £80; Buyer "B" £100 and buyer "C" £130. Buyer "C" is successful because his bid is the highest received **but he only pays £110** being one bidding step above the underbidder "B".

Alternatively on a lot estimated £250 only one bid is received from Buyer "A" who bids £275. He is successful because his is the only bid received however, **he only pays £220** because the lot is reserved at this price.

Where bids are received which are equal the first one received will be the successful buyer. For example on a lot estimated £80 three bids are received. Buyer "A" bids £95; Buyer "B" £95 and Buyer "C" £95. Buyer "A" is successful at £95 because his was the first bid received.

Bids can also be made by Telephone, Fax or Email but must be confirmed in writing. **BIDS ARE CONFIDENTIAL** and will not be disclosed to third parties under any circumstances.

BIDDING STEPS - Bids will be increased by the following steps:

up to £20	in £1 steps
£20-£50	in £2 steps
£50-£100	in £5 steps
£100-£250	in £10 steps
£250-£500	in £25 steps
£500 and over	in £50 steps

RESERVES - Are usually 80%-90% of the estimates.

REFUNDS - All lots (except literature) can be returned and are offered on a "**NO QUIBBLE, FULLY REFUNDABLE**" basis provided they are returned within 48 hours of receipt and in the same condition as when they were received.

PAYMENT - Payment is due immediately upon receipt of our invoice. We are contracted to pay our vendors after 30 days and amounts outstanding after this time are subject to interest at the rate of 10% per month. We accept payment by the following Credit and Charge cards at **NO EXTRA COST** to the buyer: Visa

MasterCard

American Express

Cheque payable to **Bridger & Kay Limited** or **Temple Bar Auctions**; Bank Transfer (National Westminster Bank, 45/49 Broadmead, Bristol, BS1 3EU - a/c 00603317, sorting code 52-10-03), BIC NWBK GB 2L, IBAN GB84 NWBK 5210 0300 6033 17; Bank Drafts (Sterling only); US Dollar Cheques (converted at current rate of exchange).

POSTAGE, PACKING & INSURANCE -

Depends on the size, weight and value of the material being sent. Charged at cost.

BUYERS PREMIUMS & HANDLING - We do not charge any.

CATALOGUE SUBSCRIPTIONS - We do not charge a subscription. Catalogues are free to regular bidders.

VENDORS - Our commission rates to Vendors are competitive with most other auction houses. We do not charge unsold or lotting fees and with **NO BUYERS PREMIUM** can obtain higher prices for vendors.

Please contact STEVE ELLIS to discuss any material you have for sale.

ADEN

Lot	Description	Est.
1	1951 KGVI 15c on 2½a blue. An u/m never hinged NW corner copy showing the SURCHARGE DOUBLE variety. Top margin has old certificate number attached (Certificate no longer accompanies). Tiny hinge remainder in top margin only. Scarce. SG 38a.	£1,200
2	1953-63 QEII 15c "Crater" in the three listed shades, greenish grey, deep greenish grey and greenish slate, SG 53,53a,53b.	£40
3	1953-63 QEII 25c "Mosque" in two of the three listed shades, deep rose-red and rose-red, both copies u/m never hinged. SG 55,55a.	£20

ADEN - QU'AITI STATE OF SHIHR & MUKALLA

Lot	Description	Est.
4	1942-46 'Sutan Sir Saleh bin Ghalib Al-Qu'aiti' ½a in the two listed shades, blue-green (1942 Printing) and olive-green (1946 Printing), both shades u/m never hinged blocks of four. SG 1,1a.	£110

ADEN - SOUTH ARABIAN FEDERATION

Lot	Description	Est.
5	1965 "New Definitive Issue" illustrated Official First Day Cover bearing complete set of fourteen (SG 3-16) all tied neatly to cover with ADEN postmarks dated 1 AP '65.	£25
6	Qu'aiti - 1966 'Churchill Commemoration' complete set of three in superb u/m never hinged SE corner Plate 1A blocks of four all UNOFFICIALLY OVERPRINTED IN BLACK. See footnote in Gibbons catalogue under SG 70. Listed in the Michel Catalogue as 65-67. Cat 150 Euros. SG 65-67 var.	£350
7	Kathiri - 1967 100f on 2s deep yellow-green 'World Peace' issue. A superb u/m never hinged copy showing the OVERPRINT INVERTED variety. Unlisted by Gibbons & Michel. SG 105 var.	£75

ANTIGUA

Lot	Description	Est.
8	1887 QV 2½d ultramarine. A very fine mint vertical pair (lower copy u/m never hinged) overprinted "SPECIMEN" (Samuel Type D12) with the lower copy also showing the TOP LEFT TRIANGLE DETACHED variety - Row 3/3 Plate 2 right pane. Only 5 or 6 copies possible. Variety u/m never hinged! SG 27s,27bs.	£650
9	1903-07 6d purple & drab. A very fine mint copy showing the WATERMARK INVERTED. SG 36w.	£140
10	1921-29 KGV 1s black/emerald. A very fine mint example showing the WATERMARK INVERTED & REVERSED. Scarce. SG 57y.	£200
11	1921-29 KGV 1d bright scarlet and 1d carmine-red shade for comparison, both copies very fine mint. SG 63,65.	£30

PLEASE POST YOUR BIDS EARLY - ON A TIED BID THE FIRST ONE RECEIVED WILL WIN.
--

ANTIGUA

Lot	Description	Est.
12	1935 KGV Silver Jubilee complete set of four very fine mint perforated SPECIMEN. Samuel Type D19. SG 91s-94s.	£90
13	1948 KGVI Silver Wedding set in superb u/m never hinged NE corner blocks of four. SG 112-113.	£56

ASCENSION

Lot	Description	Est.
14	1924-33 KGV ½d grey-black & black "Badge" issue. A very fine mint copy showing the Row 4/6 TORN FLAG variety. SG 10b.	£140
15	1924-33 KGV 2d grey-black & grey "Badge" issue. A very fine used copy showing the Row 2/1 BROKEN MAINMAST variety. SG 13a.	£200
16	1924-33 KGV 3d blue "Badge" issue. A very fine used copy showing the Row 5/1 CLEFT ROCK variety. SG 14c.	£225
17	1935 KGV Silver Jubilee 1½d deep blue & scarlet. A fine mint copy showing the KITE & HORIZONTAL LOG variety. Row 10/6 Plate 2B. SG 31l.	£325
18	1938-53 KGVI ½d black & bluish violet perf 13 in an u/m never hinged half sheet of thirty from the left-hand side of the sheet showing the Row 2/3 LONG CENTRE BAR TO "E" in "GEORGETOWN" variety and Row 2/2 shows RIGHT FRAME LINE RE-ENTRY. Listed in the Commonwealth catalogue as CW 14a,14b. SG 38b,38ba.	£110
19	1938-53 KGVI 1d black & yellow-orange Perf 13½ in an u/m never hinged left-hand marginal block of four. SG 39a.	£40
20	1938-53 KGVI 1½d black & rose-carmine perf 14. A very fine mint copy showing the Row 5/1 DAVIT FLAW variety. SG 40da.	£65
21	1938 KGVI 1½d black & rose-carmine Perf 13 in an u/m never hinged SW corner block of twelve (2x6) with the top left copy showing the Row 5/1 DAVIT FLAW variety. SG 40f,40fa.	£125
22	1970 QEII 4d multicoloured 'Wahoo' in an u/m never hinged SW corner Cylinder block of four showing the WATERMARK CROWN RO RIGHT OF 'CA' variety. Rare in this format. SG 126w.	£1,500
23	1985 QEII 12p multicoloured 'The Duke of York at Balmoral'. An u/m never hinged copy showing the WATERMARK INVERTED. SG 376w.	£10
24	2002 QEII "Scenes & Flowers" complete set of twelve in superb u/m never hinged NW corner Cylinder / Traffic Light blocks of four. SG 851-862.	£110

AUSTRALIA

Lot	Description	Est.
25	1925-30 KGV 1½d red on off-white card Perf 12½ (Squared corners) Postal Stationery Letter Card very fine unused. Brusden White LC59 cat \$120.	£35
26	1911 KGV 1d rose-red on white surfaced card Postal Stationery Postcard very fine unused. Brusden White P23 B cat \$75.	£20

ALL LOTS ARE OFFERED ON A 'NO QUIBBLE, FULLY REFUNDABLE BASIS.'

AUSTRALIA

Lot	Description	Est.
27	1938 Postage Due 3d carmine & green in a superb u/m never hinged SE corner block of four. SG D115.	£150
28	1929 'Black Swan' 1½d dull scarlet in an u/m never hinged lower marginal block of six (3x2). The top centre copy shows the RE-ENTRY variety ('T' OF 'AUSTRALIA' CLEARLY DOUBLE). Row 7/4 Plate 2. The variety lightly mounted mint, rest u/m never hinged. SG 116,116a.	£55
29	1930 'Captain Charles Sturt' 1½d scarlet in an u/m never hinged NW corner Plate 2 block of four. SG 117.	£10
30	1931-36 KGV 1d green in a very fine mint lower marginal "JOHN ASH" imprint pair. SG 125.	£15
31	1950 "Wallaroo" ½d orange in an u/m never hinged half sheet of eighty from the right-hand pane with one copy showing the SKY RETOUCH variety. Row 6/8 right pane. SG 228,228b.	£55
32	1963-65 'Navigators' complete set of six in superb u/m never hinged blocks of four. SG 355-360.	£320

AUSTRALIA - NEW SOUTH WALES

Lot	Description	Est.
33	1903-08 QV 3d yellow-green perf 11 Watermark W65 in a very fine mint block of four. The lower pair is u/m never hinged. SG 327.	£50

AUSTRALIA - NORFOLK ISLAND

Lot	Description	Est.
34	1947-59 "Ball Bay" 3d emerald-green in a superb u/m never hinged SW corner COMMONWEALTH OF AUSTRALIA Imprint block of four. SG 6a.	£60
35	1959 "Ball Bay" 2s deep blue in a superb u/m never hinged SW corner COMMONWEALTH OF AUSTRALIA Imprint block of four. SG 12a.	£50
36	1980-81 'Airplanes' complete set of sixteen in superb u/m never hinged SE corner Cylinder blocks of four. SG 236-251.	£32

AUSTRALIA - QUEENSLAND

Lot	Description	Est.
37	1907 cover to England franked with a pair of QV 1d (SG Type 21), each stamp cancelled by "336" barred oval numeral cancel with a proving "THURSDAY ISLAND" skeleton postmark below dated OC 10 '07. Reverse with arrival postmark dated NO 26 '07. Thursday Island lies 39 Kilometers north of Cape York Peninsula, Queensland. In 1877, an administrative centre for the Torres Strait Islands was set up on the island by the Queensland Government and a lucrative pearling industry was founded on the island in 1885. Comes with photo postcard of Thursday Island. A lovely neat cover from this remote island.	£160

AUSTRALIA - VICTORIA

Lot	Description	Est.
38	1911 QV 1d rose-carmine. An u/m never hinged copy with perf "OS". Brusden White V44Gba. SG 417b var.	£10
39	1905-13 QV 1d rose-carmine on thin, ready gummed paper. An u/m never hinged block of four perforated "OS". Brusden White V49ba. SG 454a var.	£30

AUSTRALIA - WESTERN AUSTRALIA

Lot	Description	Est.
40	1898-1907 'Swan' 2½ blue in an u/m never hinged SE corner block of four from the left-hand pane of the sheet. SG 114.	£90

AUSTRALIA / B.C.O.F. (JAPAN)

Lot	Description	Est.
41	1946-47 'Roo' ½d orange. An u/m never hinged right-hand marginal pair with the tight copy showing the LINE TO KANGAROO'S EAR variety. Row 6/8 right pane. Hinged in margin only. SG J1,J1e.	£110
42	1946-47 'Roo' ½d orange. An u/m never hinged NE corner block of four with the top right-hand copy showing the NARROW "N" variety. Row 1/8 right pane. Hinged in margin only. SG J1,J1b.	£170
43	1946-48 'Kookaburra' 6d purple-brown in a very fine mint lightly hinged NE corner block of four. The top right-hand copy shows the NARROW "N" variety. Row 1/8 right pane. Lightly hinged in the margin and one copy only, rest including the variety u/m never hinged. SG J4,J4c.	£290
44	1946-48 'Lyrebird' 1s grey-green. An u/m never hinged NE corner pair with the right-hand copy showing the NARROW "N" variety. Row 1/8 right pane. Hinged in margin only. SG J5,J5c.	£275

BAHAMAS

Lot	Description	Est.
45	1929 KGV 2d + 1d red on cream stationery Registered Envelope Size G overprinted SPECIMEN very fine unused. H&G C4.	£35
46	1938 KGV 1d red on cream stationery Registered Envelope Size G overprinted SPECIMEN very fine unused. H&G C5a.	£45
47	1941? KGV 1d black on 1½d brown on buff stationery Post Card very fine unused. Scarce. H&G 15a.	£150
48	1938 KGV 1d red on cream stationery Registered Envelope Size G very fine unused. H&G C6.	£25
49	1935 KGV Silver Jubilee 2½d brown & deep blue. A very fine mint copy showing the DIAGONAL LINE BY TURRET variety. Row 10/1 & 10/2 Plate 2A. SG 142f.	£135

NOTE - THERE IS NO BUYERS PREMIUM OR HANDLING CHARGES.
--

BAHAMAS

Lot	Description	Est.
50	1935 KGV Silver Jubilee 6d light blue & olive-green. A very fine mint copy showing the DOT TO LEFT OF CHAPEL variety. Row 8/3 Plate 2B. SG 143g.	£185
51	1942 KGVI ½d bluish green. A very fine mint copy example showing the ELONGATED "E" variety. Row 9/6 left pane. SG 149ca.	£125
52	1942 KGVI ½d bluish green in a superb u/m never hinged Plate 1 complete left-hand pane of sixty. One copy shows the ELONGATED 'E' variety. Row 9/6 left-hand pane. SG 162,162a.	£60
53	1948 KGVI 'Tercentenary of Settlement' complete set of sixteen in u/m never hinged marginal blocks of four. Most are corner blocks but some are Imprint blocks. SG 178-193.	£250
54	1954-63 QEII ½d in two contrasting shades, black & red-orange and black and deep red-orange, both u/m never hinged SE corner BRADBURY WILKINSON Imprint Plate blocks of eight. The former being a Plate 1 block and the latter being a Plate 1a block. SG 201, 201 var.	£20
55	1962 QEII 2d yellow-brown & deep myrtle-green "Native Straw Work" in an u/m never hinged SE corner Plate 1a block of four. SG 204a.	£45

BAHRAIN

Lot	Description	Est.
56	1948 KGVI 2½a on 2½d ultramarine 'Olympic Games' issue. A fine mint copy showing the SURCHARGE DOUBLE variety. A scarce error. SG 63a.	£1,800
57	1950-55 KGVI 2r on 2s6d yellow-green. A very fine used block of four from the scarce Type II surcharge. SG 77a.	£165
58	1950-55 KGVI 5r on 5s red. A very fine mint copy showing the Row 6/1 EXTRA BAR variety. Scarce. SG 78a.	£625
59	1957 QEII 25np on 4d ultramarine in a very fine mint right-hand marginal block of eight (2x4) with the lower left copy showing the "SOLID PEARL" variety. Row 14/5 Cylinder 1 no dot. Listed in the Stanley Gibbons GB Specialised catalogue as W6a. One stamp hinged only (variety u/m never hinged). SG 114,114 var.	£18

BARBADOS

Lot	Description	Est.
60	1996 \$50 and \$100 multicoloured Revenue Stamps. Both values superb u/m never hinged. Unlisted in Barefoot.	£50
61	1913 KGV ½d green on white stationery Post Card overprinted SPECIMEN fine unused. H&G 11A.	£30
62	1916-19 "Seal of the Colony" 2½d ultramarine. An u/m never hinged copy showing the WATERMARK INVERTED & REVERSED. SG 185y.	£45
63	1935 KGV Silver Jubilee complete set of four in u/m never hinged NW corner blocks of four. Lightly hinged in top margin only. SG 241-244.	£140

NOTE - RESERVES ARE NORMALLY 80%-90% OF THE ESTIMATED PRICES.

BARBADOS

Lot	Description	Est.
64	1938-47 "Badge of the Colony" 2d carmine. A very fine used copy showing the Row 11/9 EXTRA FRAME LINE variety. SG 250da.	£48
65	1944 'Seal of Colony' 4d black P14 in an u/m never hinged left-hand marginal block of four with the top left-hand copy showing the FLYING MANE variety. Row 4/1. SG 253d,253da.	£175
66	1939 KGVI 'Tercentenary of General Assembly' set of five all in u/m never hinged lower marginal DE LA RUE imprint blocks of four. Lightly hinged in margin only. SG 257-261.	£70
67	1947 KGVI 1d on 2d carmine perf 14. A very fine mint pair with the right-hand copy showing the BROKEN "E" IN "PENNY" variety. Row 7/4 & 11/4. SG 264,264d.	£36

BASUTOLAND / LESOTHO

Lot	Description	Est.
68	1966 Postage Due 1c carmine overprinted "LESOTHO" in an u/m never hinged SE corner Plate 1 block of twelve. Row 4/7 shows the "LSEOTHO" ERROR. SG D11,D11a.	£26
69	1933-52 Postage Due set of two very fine mint perforated SPECIMEN. Samuel Type D19. SG D1s-D2s.	£60
70	1938 KGVI 1d scarlet. A superb u/m never hinged NW corner block of eight, the lower right copy showing the Row 2/4 TOWER FLAW variety. Scarce as this variety did not appear on all printings. SG 19,19a.	£140
71	1945 KGVI Victory 1d brown & carmine in a u/m never hinged right-hand marginal block of six (three pairs). Row 9/6 shows the "BARBED WIRE" FLAW variety. CW S4,S4a. SG 29,29a.	£12
72	1948 KGVI Silver Wedding 10s grey-olive in an u/m never hinged lower marginal BRADBURY WILKINSON imprint block of four. SG 37.	£200
73	1961 QEII 2c on 2d deep bright blue & orange. A superb u/m never hinged copy showing the TRIAL SURCHARGE in large bold font from a Trial Printing. Only one sheet printed. See footnote in Gibbons. SG 60 var.	£300

BECHUANALAND / BOTSWANA

Lot	Description	Est.
74	1938 KGVI Bechuanaland Protectorate 1d carmine on buff stationery Post Card very fine unused. H&G 9.	£20
75	1932-58 Postage Due set of three very fine mint perforated SPECIMEN. Samuel Type D19. SG D4s-D6s.	£90
76	1935 KGV Silver Jubilee 1d deep blue & scarlet. A very fine mint copy showing the FLAGSTAFF ON RIGHT-HAND TURRET variety. Row 7/1 Plate 5. SG 111d.	£485

PLEASE POST YOUR BIDS EARLY - ON A TIED BID THE FIRST ONE RECEIVED WILL WIN.
--

BECHUANALAND / BOTSWANA

Lot	Description	Est.
77	1935 KGV Silver Jubilee 2d ultramarine & grey-black. A very fine used copy showing the EXTRA FLAGSTAFF variety. Row 9/1 Plate 1. SG 112a.	£165
78	1961 QE II 2½c on 2½d bright ultramarine in an u/m never hinged SE corner WATERLOW & SONS Imprint Plate 1 block of ten. The second stamp on the lower row shows the Row 10/3 SPACED "c" variety. Scarce (especially in this format). SG 160,160a.	£375
79	1961 QEII 12½c on 1s3d black & lilac in an u/m never hinged SE corner Plate 1 block of four. Lightly hinged in margin only. SG 164.	£10

BERMUDA

Lot	Description	Est.
80	1924-32 KGV 2s6d black & carmine/pale blue. A very fine mint lightly hinged copy showing the DAMAGED LEAF AT BOTTOM RIGHT variety. Row 5/6 on printings from April 1918. SG 89f.	£260
81	1924-32 KGV 2s6d black & scarlet-vermilion/deep blue. A very fine mint very lightly hinged copy showing the BROKEN CROWN AND SCROLL variety. Row 2/12. HPF #24. SG 89jb.	£325
82	1924-32 KGV 2s6d black & bright-vermilion/deep blue. A very fine used copy of this rare shade. RPSL Certificate (1981). SG 89k.	£2,250
83	1924-32 KGV 12s6d grey & orange. A very fine mint copy showing the BROKEN CROWN & SCROLL variety. Row 2/12. HPF #24. SG 93b.	£550
84	1935 KGV Silver Jubilee complete set of four in u/m never hinged marginal blocks of four. Lightly hinged in the margin only. SG 94-97.	£100
85	1952 KGVI 2s reddish purple & blue/pale blue P13 on ordinary paper in a superb u/m never hinged NE corner block of four. Headplate pale pink under UV light. Listed in the Commonwealth Catalogue as CW 21b. SG 116f var.	£175
86	1950 KGVI 2s6d black & orange-red/pale blue perf 13 on ordinary paper in a superb u/m never hinged block of four. The lower right-hand copy shows CUT SCROLL variety - stamp #14. SG 117c,117c var.	£70
87	1942 KGVI 5s pale bluish green and carmine-red/pale yellow in a superb u/m never hinged lower marginal block of four. SG 118d.	£300
88	1943 KGVI 5s pale bluish green and carmine-red/pale yellow in a very fine mint block of four with the top left-hand copy showing the GASH IN CHIN variety. Row 2/5 and found on printings between May 1941 and March 1943. Lightly hinged on the top pair only. HPF #17. SG 118d,118df cat £1300.	£925
89	1951 KGVI 10s green & vermilion/green in a superb u/m never hinged NW corner block of four. SG 119e.	£120
90	1953 KGVI 10s green & dull red/green perf 13 on ordinary paper in a very fine mint SE corner Plate 1 block of four. Very lightly hinged on the top pair only, lower pair u/m never hinged. SG 119f.	£140

ALL LOTS ARE OFFERED ON A 'NO QUIBBLE, FULLY REFUNDABLE BASIS.'

BERMUDA

Lot	Description	Est.
91	1944 KGVI 12s6d grey & pale orange "Keyplate" issue on ordinary paper. A mint copy with small hinge remainder and short perf at bottom showing the BROKEN LOWER RIGHT SCROLL variety. Row 5/12 found only on printings from 1941 to 1943. A rare flaw with only a possible 91 copies printed. SG 120ce cat £2250.	£850
92	1938-53 KGVI £1 purple & black/red Perf 14. An u/m never hinged copy showing 'ER' JOINED variety. Row 1/2. SG 121a.	£825
93	1943 KGVI £1 deep reddish purple & black/pale red in a very fine mint very lightly hinged SE corner Plate 1 block of four. Very lightly hinged on top left stamp only (barely a trace), rest superb u/m never hinged. SG 121c.	£220
94	1952 KGVI £1 bright violet & black/scarlet in a very fine mint SE corner Plate 1 block of four. Lightly hinged on one stamp only, rest u/m never hinged. SG 121e.	£475
95	1953-62 QEII 1d black & red in an u/m never hinged SE corner BRADBURY WILKINSON Imprint Plate 1a block of eight. SG 136.	£20
96	1953-62 QEII 4½d emerald in an u/m never hinged SE corner BRADBURY WILKINSON Imprint Plate 1a block of eight. SG 142.	£22
97	1953-62 QEII 1s3d in the four listed Types (Die I & II) and shades as per Gibbons, blue (Type I), greenish blue (Type I), blue (Type II) and bright blue (Type II) all four copies u/m never hinged. SG 145,145a,145b,145bc.	£40

BRITISH ANTARCTIC TERRITORY

Lot	Description	Est.
98	1972 Royal Silver Wedding 5p multicoloured. An u/m never hinged copy showing the WATERMARK INVERTED. SG 42w.	£16

BRITISH COMMONWEALTH

Lot	Description	Est.
99	Small box containing predominately QEII issues in sets and single items. Strength in the surcharged issues of Basutoland, Bechuanaland & Swaziland. We note Basutoland SG 58a LMM with certificate (slight gum bend); SG 64a mint & used; Swaziland SG 75b LMM with dealers security mark also a range of new issues from Harry Allen in the 1970's with watermark varieties.	£1,750

BRITISH GUIANA / GUYANA

Lot	Description	Est.
100	1890 1c on \$2 green. A very fine used copy on piece showing the SURCHARGE DOUBLE variety. UNPRICED used in Gibbons. SG 208a.	£95
101	GUYANA - 1966-67 QEII 8c ultramarine watermark Multi Script CA in an u/m never hinged SE corner Plate 2 block of four. SG 382.	£18

BRITISH HONDURAS / BELIZE

Lot	Description	Est.
102	1938 KGV 2c + 3c brown on cream stationery Registered Envelope Size G overprinted SPECIMEN very fine unused. H&G C5.	£40
103	1891 QV 2c on 1d carmine pair, one copy BISECTED (1c), on local "AIKMAN" cover cancelled Belize cds of MY 9 '91. SG 37,37a.	£60
104	1935 KGV Silver Jubilee 4c green & indigo. A very fine used copy showing the LIGHTNING CONDUCTOR variety. Row 2/5 Plate 3. RPSL Certificate (2005). SG 144c.	£170
105	1953-62 QEII 1c green & black in two u/m never hinged blocks of four, one being a lower marginal WATERLOW & SONS Imprint block and the other being a SE corner Plate 1 block. SG 179.	£10
106	1962 QEII 10c multicoloured 'Scarlet Macaw'. A superb u/m never hinged example showing the error BLUE OMITTED variety. Comes with normal for comparison. SG 207a.	£485

BRITISH INDIAN OCEAN TERRITORY

Lot	Description	Est.
107	B.I.O.T. 1968 QEII 5r multicoloured. An u/m never hinged copy showing STOPS NEARLY MISSING AFTER "I" & "O" variety. SG 14 var.	£12
108	B.I.O.T. 1968 QEII 10r multicoloured. An u/m never hinged upper marginal vertical pair with the top copy showing the NO STOP AFTER "B" variety. Row 1/8. SG 15,15a.	£160

BRITISH LEVANT

Lot	Description	Est.
109	1905-08 KEVII 2pi on 5d dull purple & ultramarine in a superb u/m never hinged part sheet of thirty. The margins show a Continuous Rule in dull purple from the Head Plate & a Co-extensive Rule in ultramarine from the Duty Plate, the top margin showing both these rules superimposed. From these Marginal Rules it can be concluded that the Duty Plate was printed first. Printed by DE LA RUE from Head Plate 1 Duty Plate 1. Ex Baillie. SG 14.	£950

BRITISH OCCUPATION OF ITALIAN COLONIES

Lot	Description	Est.
110	1948 Postage Due 'BMA ERITREA' 10c on 1d carmine in u/m never hinged upper marginal block of four with the top left-hand copy showing the constant Row 1/7 variety HYPHEN BETWEEN "E" & "A" in "ERITREA". SG ED2, ED2 var.	£75
111	1948 Postage Due 'BMA ERITREA' 20c on 2d agate in an u/m never hinged lower marginal block of four with the top left copy showing the NO STOP AFTER "A" variety. SG ED3, ED3a.	£90

NOTE - THERE IS NO BUYERS PREMIUM OR HANDLING CHARGES.
--

BRITISH OCCUPATION OF ITALIAN COLONIES

Lot	Description	Est.
112	1950 Postage Due 'B A ERITREA' 20c on 2d agate. An u/m never hinged pair with the right-hand copy showing NO STOP AFTER "A" variety. Scarce. SG ED8,ED8a.	£350
113	1943 KGVI 2½d light ultramarine in a very fine mint SW corner Control L42 Cylinder 99 no dot block of six. Perf Type 5. SG M13.	£35
114	1943 KGVI 1s bistre-brown in a very fine mint SW corner Control K42 Cylinder 6 no dot block of six. Perf Type 6B. SG M18.	£35
115	1942 KGVI MEF 1d scarlet. A very fine mint block of four of the round stops overprint, hinged only on the top pair. SG M6a.	£125
116	1942 KGVI MEF 3d violet. A superb u/m never hinged block of thirty from the rare Nairobi overprinting. This piece comes from complete horizontal rows 1-5. The second and third rows are the square stops overprinting (Gibbons Type M2) and the first, fourth & fifth rows are the rounds stops overprinting (Gibbons Type M2a) giving twelve se-tenant vertical pairs (Gibbons SG M9b). Brandon certificate (1999) and Sismondo Certificate (2006). A very rare exhibition piece and to our knowledge the second largest known multiple of this issue this piece being a complete half sheet. SG M9,M9a,M9b cat £7980++.	£6,800
117	1942 Postage Due ½d emerald in an u/m never hinged lower marginal Control G40 block of four. Lower margin perforated. SG MD1.	£20
118	1943-46 KGVI 2½d light ultramarine in a very fine mint SW corner Control K42 Cylinder 90 no dot block of six. Perf Type 5. SG S3.	£30
119	1943 KGVI 3d pale violet in a very fine mint SW corner Control K42 Cylinder 21 no dot block of six. Perf Type 5. SG S4.	£30

BRITISH VIRGIN ISLANDS

Lot	Description	Est.
120	1899 ½d yellow-green. A very fine used copy showing the Row 10/1 "HALFPFNNY" error. SG 43a.	£90
121	1935 KGV Silver Jubilee complete set of four in u/m never hinged marginal blocks of four. Lightly hinged in the margin only. SG 103-106.	£110
122	1935 KGV Silver Jubilee 1d deep blue & scarlet. A very fine mint copy showing the KITE & VERTICAL LOG variety. Row 10/6 Plate 2A. SG 103k.	£120
123	1935 KGV Silver Jubilee 1s slate & purple. A very fine mint copy showing the KITE & HORIZONTAL LOG variety. Row 10/6 Plate 2B. SG 106l.	£325

BURMA - JAPANESE OCCUPATION

Lot	Description	Est.
124	1942 KGVI 15c on 4a on 4s emerald (Admiral Togo) in a superb used block of four. SG J63.	£160

BURMA / MYANMAR

Lot	Description	Est.
125	1938-40 KGVI 2a6p claret. A very fine mint copy showing the Row 15/3 "BIRDS OVER TREES" variety. SG 25a.	£175

CANADA

Lot	Description	Est.
126	1949 Official 7c blue overprinted 'O.H.M.S.' in an u/m never hinged NE corner 'CANADIAN BANK NOTE CO.' Imprint Plate 1 block of four. SG O171.	£65
127	1950 Official 20c slate overprinted 'G' in an u/m never hinged NW corner 'CANADIAN BANK NOTE CO.' Imprint Plate 1 block of four. SG O187.	£170
128	1950 Official 7c blue overprinted 'G' in an u/m never hinged NE corner 'CANADIAN BANK NOTE CO.' Imprint Plate 1 block of four. SG O190.	£65
129	1911-22 KGV "Admiral" 2c deep rose-red in a very fine mint lightly hinged well centred booklet pane of six. Unitrade 106a cat \$60. SG 201a.	£25
130	1911-22 KGV "Admiral" 3c brown. A very fine mint lightly hinged well centred copy from the "Wet Printing". Scarce in this condition. Unitrade 108 cat \$30. SG 204.	£10
131	1915 KGV 2c carmine-red in an u/m never hinged upper marginal block of four. SG 229.	£85
132	1922 KGV "Admiral" 2c green imperf x perf 8. A choice mint very lightly hinged well centred wide margin horizontal coil pair from the "Dry Printing". Ex "G.Marnier" collection. Unitrade 128ii cat \$45. SG 257 var.	£20
133	1935 KGV Silver Jubilee 13c blue 'Royal Yacht Britannia' in a superb u/m never hinged block of four with the lower right-hand copy showing the 'SHILLING MARK' variety. Row 8/8 upper right pane Plate 1. SG 340,340a.	£525
134	1935 KGV 5c blue in a very fine mint lightly hinged at top well centred Plate 2 lower marginal block of six. Unitrade 221 cat \$70. SG 345.	£30
135	1935 KGV 1c, 2c & 3c imperf x perf 8 coil stamps set of three in very fine lightly hinged pairs selected for their perfect centering. Unitrade 228-230 cat \$130. SG 352-354.	£60
136	1937-38 KGV complete set of three in u/m never hinged Coil strips of four. SG 368-370.	£115
137	1946-47 Peace Re-conversion 8c brown 'Farm Scene' in an u/m never hinged SW corner 'CANADIAN BANK NOTE CO.' Imprint Plate 1 block of four. SG 401.	£10
138	1946-47 Peace Re-conversion 14c sepia 'Power Station' in an u/m never hinged SW corner 'CANADIAN BANK NOTE CO.' Imprint Plate 1 block of four. SG 403.	£20
139	1946-47 Peace Re-conversion 20c slate 'Combine-harvester' in an u/m never hinged SW corner 'CANADIAN BANK NOTE CO.' Imprint Plate 1 block of four. SG 404.	£20
140	1946-47 Peace Re-conversion 50c green 'Lumbering' in a very fine mint NW corner 'CANADIAN BANK NOTE CO.' Imprint Plate 1 block of four. Two stamps hinged. SG 405.	£40
141	1946-47 Peace Re-conversion \$1 purple 'Albegweit' in an u/m never hinged SE corner 'CANADIAN BANK NOTE CO.' Imprint Plate 1 block of four. SG 406.	£60

NOTE - RESERVES ARE NORMALLY 80%-90% OF THE ESTIMATED PRICES.

CANADA - NEWFOUNDLAND

Lot	Description	Est.
142	1887-88 "Newfoundland Dog" ½c rose-red in an u/m never hinged block of six. SG 49.	£100
143	1933 Air mail 15c chocolate in a very fine mint HORIZONTAL PAIR WITH AND WITHOUT WATERMARK. SG 229a.	£20
144	1937 KGVI Coronation 7c bright ultramarine perf 14 in an u/m never hinged block of four, one copy showing the Row 4/8 RE-ENTRY TO RIGHT OF DESIGN variety. SG 259,259b.	£70
145	1937 KGVI Coronation 15c claret comb perf 13 in a very fine mint block of four. Hinged on top pair only, lower pair u/m never hinged. SG 263d.	£95

CAPE MAFEKING

Lot	Description	Est.
146	1900 1d on ½d green (Type 1 in the setting), 3d on 1d carmine (Type 6 in the setting) and 6d on 3d lilac & black (Type 3 in the setting). All three values very fine used on piece all individually cancelled with 'MAFEKING' postmarks dated AP 16 1900. SG 1,3,10.	£180

CAYMAN ISLANDS

Lot	Description	Est.
147	1926 KGV 3s green & violet. A superb used copy tied to piece showing DOT UNDER SECOND "A" IN "CAYMAN" variety and has been cancelled with a complete "CAYMAN BRAC / CAYMAN ISLANDS" postmark dated JA 1 '26. SG 50 var.	£55
148	1935 KGV Silver Jubilee 2½d brown & deep blue in an u/m never hinged SW corner Frame Plate 1 block of four. SG 109.	£40
149	1938-48 KGVI ½d green Perf 13x11½ in an u/m never hinged SE corner DE LA RUE Imprint Plate 1 block of eight. SG 116.	£10
150	1943 KGVI 1s red-brown Perf 14 in an u/m never hinged lower marginal DE LA RUE Imprint block of four. SG 123a.	£25
151	1953-62 QEII ¼d deep bright blue & rose-red in an u/m never hinged SE corner BRADBURY WILKINSON Imprint Plate 1 block of eight. SG 148.	£10
152	1953-62 QEII 2½d turquoise-blue & black in an u/m never hinged lower marginal BRADBURY WILKINSON Imprint Plate 1 block of eight. SG 153.	£35
153	1962-64 QEII 2d blue & deep brown in an u/m never hinged SE corner BRADBURY WILKINSON Imprint Plate 1 block of eight. SG 168.	£20

CEYLON / SRI LANKA

Lot	Description	Est.
154	1882 QV 20c on 64c red-brown in an u/m never hinged upper marginal block of nine. Hinged once in top margin. SG 143.	£120
155	1885 QV 25c on 32c slate in a superb u/m never hinged lower marginal block of nine. SG 167.	£250

PLEASE POST YOUR BIDS EARLY - ON A TIED BID THE FIRST ONE RECEIVED WILL WIN.

CEYLON / SRI LANKA

Lot	Description	Est.
156	1912-25 KGV 6c carmine in an u/m never hinged interpanneau block of four showing the WATERMARK SIDEWAYS (Crown to right of CA). SG 306a.	£220
157	1928 KGV 5r PLATE PROOF of frame in black on thin, white, ungummed paper. An u/m never hinged upper marginal block of four. SG 365 var.	£120
158	1935 KGV Silver Jubilee 20c brown & deep blue. A very fine mint copy showing the DIAGONAL LINE BY TURRET variety. Row 10/1 & 10/2 Plate 2A. SG 381f.	£150
159	1972 2c multicoloured 'Emperor Angel Fish'. An u/m never hinged block of four showing the error PLUM OMITTED variety with normal block for comparison. SG 594,594a.	£20
160	1974 15c multicoloured 'Prime Minister Bandaranaike' in an u/m never hinged vertical IMPERF PAIR with normal for comparison. SG 605e.	£95

COINS, MEDALS, CIGARETTE CARDS & EPHEMERA

Lot	Description	Est.
161	Small box containing various coins and banknotes. We note 18 modern crowns and white five pound note (creased in several places).	£120
162	Box containing Royal Mint commemorative and proof coins (some on covers) from the last twenty years. A few proof silver coins noted.	£450
163	Box containing a large range of world coins.	£250

COLLECTIONS

Lot	Description	Est.
164	Box containing a small range of GB 1980's presentations packs, FDC's, stamps loose in envelopes plus a small collection of USA and two small stockbooks containing mint GB commemoratives. We also note in one a four margin penny black but very grubby.	£70
165	Box containing five GB year books from the late 1990's - 2003 plus small selection of presentation packs, various coin covers in albums, 2 albums "Leaders Of the World" also five albums of FDC's.	£180

COOK ISLANDS - PENRHYN

Lot	Description	Est.
166	1914-15 KEVII ½d yellow-green surcharged with Type I in carmine. An u/m never hinged horizontal strip of three with the centre stamp showing NO STOP AFTER "ISLAND" variety. SG 19,19a.	£22
167	1917 KGV 2½d blue in an u/m never hinged NW corner Plate 17 block of four. SG 24.	£35

ALL LOTS ARE OFFERED ON A 'NO QUIBBLE, FULLY REFUNDABLE BASIS.'

CYPRUS

Lot	Description	Est.
168	1881 QV 1pi rose Watermark 'CC'. Six examples all very fine used displaying a range of different numeral cancels, comprising Larnaca (942), Nicosia (969), Limassol (975), Paphos (981), Polymedia (D47) and Headquarters Camp (D48). The 'D47' and 'D48' Numeral Cancels particularly scare on this issue. The stamp with 'D47' cancel Ex Brewer. The six examples Ex Gibbons. SG 12 (x6).	£140
169	1904-10 KEVII 9pi yellow-brown & carmine. A fine used copy showing the WATERMARK INVERTED. SG 68aw	£90
170	1938-51 KGVII 1½pi violet in an u/m never hinged lower marginal WATERLOW & SONS Imprint block of six. SG 155a.	£20
171	1938-51 KGVII 3pi ultramarine in an u/m never hinged lower marginal WATERLOW & SONS Imprint block of six. SG 156a.	£20
172	1938-51 KGVII 3pi ultramarine in an u/m never hinged SE corner Plate 1 block of six. SG 156a.	£25
173	1948 KGVII Silver Wedding 1½pi violet. A very fine mint copy showing the EXTRA DECORATION variety. Row 3/5. SG 166a.	£28
174	1955-60 QEII 2m blackish brown in an u/m never hinged lower marginal BRADBURY WILKINSON imprint block of eight. SG 173.	£10
175	1955-60 QEII 5m brown-orange "Oranges" in an u/m never hinged lower marginal BRADBURY WILKINSON imprint block of eight. SG 175.	£30
176	1960-61 QEII 15m "Troodos Forest" overprinted with Type 54 in two of the three listed shades, yellow-bistre & indigo and brownish bistre & deep indigo, both copies u/m never hinged. SG 192,192b.	£24

DOMINICA

Lot	Description	Est.
177	1910 "Roseau from the Sea" 1s black/green. A very fine mint lightly hinged copy overprinted SPECIMEN in red. Samuel Type D12. SG 53as.	£55
178	1935 KGV Silver Jubilee complete set of four very fine mint perforated SPECIMEN. Samuel Type D19. SG 92s-95s.	£85
179	1935 KGV Silver Jubilee 1½d ultramarine & grey in a very fine used SW corner block of four with the lower pair both showing the DIAGONAL LINE BY TURRET variety. Row 10/1 & 10/2 Plate 2A. SG 93,93f x2.	£200
180	1954-62 QEII 2c chocolate & grey-green "Carib baskets" in an u/m never hinged SE corner BRADBURY WILKINSON Imprint Plate 1 block of eight. SG 142a.	£120
181	1954-62 QEII 3c black & carmine in an u/m never hinged SE corner Plate 1a block of four. SG 144.	£30
182	1954-62 QEII 5c black & carmine-red in an u/m never hinged SE corner Plate 1a block of four. SG 146.	£20
183	1954-62 QEII 10c green & brown in an u/m never hinged SE corner Plate 1 block of four. SG 150.	£40

FALKLAND ISLANDS

Lot	Description	Est.
184	1929-37 KGV 'Gentoo Penguins' 6d in the two listed shades, purple (comb) & reddish purple (line), both copies very fine mint. SG 121,121a.	£52
185	1935 KGV Silver Jubilee complete set very fine used on blue Formula Registered Postal Stationery Envelope (152x96mm) Size G (Type E2), the stamps tied to cover with Port Stanley postmarks dated 31 DE '35. SG 139-142.	£150
186	1937 Orange-red Formula Registered Stationery Envelope Size 'G' addressed to Australia bearing complete KGV1 Coronation set of three (SG 143-145) cancelled with Port Stanley postmarks dated '26 JY' (year missing) Code 'B'. Front also shows a very fine curved Crown 'REGISTERED' handstamp struck in black. Upon arrival in Australia it was then backstamped with Registered Melbourne and Elwood (Victoria) single-circle postmarks dated 20.9.37 and 4 OC '37 respectively.	£250
187	1938-50 KGV1 2½d black & blue in an u/m never hinged lower marginal BRADBURY WILKINSON Imprint block of four. SG 152.	£30
188	1938-50 KGV1 1s light dull blue in an u/m never hinged NE corner block of four from the first printing. SG 158.	£225
189	1938 KGV1 £1 black & violet from the Second Printing. A very fine used vertical pair on piece and cancelled with a clear 'Port Stanley' cds dated 2 MY '49. SG 163 var.	£110
190	1952 KGV1 ½d green in an u/m never hinged NE corner block of six (3x2). The top centre copy shows the Row 1/5 MISSING FRAME LINE IN LOWER RIGHT CORNER variety. Heijtz 102v2. SG 172,172 var.	£50
191	1960-66 QEII ½d black & myrtle-green "Austral Thrush" in an u/m never hinged SE corner DE LA RUE Imprint Frame Plate 2 Vignette Plate 1 block of eight. Row 12/5 shows the WEAK ENTRY variety and Row 12/4 shows SUBSTITUTED CLICHE variety. Small gum bend in far SE corner margin. Stefan Heijtz 123v2. SG 193a, 193ab.	£130
192	1960-66 QEII "Gentoo Penguins" 2d black & blue in an u/m never hinged lower marginal WATERLOW & SONS Imprint Plate 1 block of ten. SG 195.	£45
193	1960 QEII "Gentoo Penguins" 2d black & deep blue. Two u/m never hinged copies, one printed by WATERLOW and the other printed by DE LA RUE. SG 195,195a.	£19
194	1988 QEII 58p multicoloured 'Charles Cooper Ship 1866'. An u/m never hinged copy showing the WATERMARK INVERTED. Heijtz 503 Wmk 1. SG 566w.	£25

FALKLAND ISLANDS DEPENDENCIES

Lot	Description	Est.
195	1944-45 KGV1 Graham Land 4d, 6d and 1s in very fine mint lower marginal BRADBURY WILKINSON imprint blocks of four. Hinged on one pair. SG A5,A6,A8.	£75
196	1944-45 KGV1 South Georgia complete set of eight in very fine mint lower marginal BRADBURY WILKINSON imprint blocks of four. Blocks hinged on one pair only. SG B1-B8.	£60

NOTE - THERE IS NO BUYERS PREMIUM OR HANDLING CHARGES.
--

FALKLAND ISLANDS DEPENDENCIES

Lot	Description	Est.
197	1946-49 KGVI 1d black & violet 'Thin Map' issue. An u/m never hinged lower marginal DE LA RUE Imprint Plate 1A block of twenty with the top row showing five copies of the DOT IN "T" OF "SOUTH" variety. Row 5/2, 5/4, 5/6, 5/8 & 5/10. SG G10,G10a x5.	£40
198	1946-49 KGVI "Thick Maps" complete set of eight in very fine mint horizontal pairs, each pair showing the GAP IN 80th PARALLEL variety. Row 1/4, 1/9, 3/4, 3/9, 5/4, 5/9. SG G1-8,G1a-8a.	£25
199	1954-62 QEII ½d black & bluish green in a superb u/m never hinged lower marginal WATERLOW & SONS Imprint block of eight. SG G26.	£10
200	1954-62 QEII ½d in the two different printings, black & bluish-green (Waterlow printing), and black & deep green (De La Rue printing), both u/m never hinged SE corner Plate 1 blocks of four. SG G26,G26a.	£50
201	1954-62 QEII 1d black & sepia-brown from the Waterlow printing in an u/m never hinged SE corner Plate 1 block of four. SG G27.	£10
202	SOUTH GEORGIA - 1977-78 QEII 1½p on 5½d deep violet in an u/m never hinged SW corner Plate 2B block of four. SG 55.	£10
203	SOUTH GEORGIA - 1977-78 QEII 10p on 2s yellow-olive & light blue on glazed paper in an u/m never hinged SE corner Plate 1B block of four. SG 63.	£15
204	SOUTH GEORGIA & SOUTH SANDWICH ISLANDS - 1994 QEII 17p multicoloured 'Jason Harbour'. An u/m never hinged upper marginal copy showing the WATERMARK CROWN TO RIGHT OF 'CA'. Heijtz 327 Wmk 1. SG 251w.	£24

FIJI

Lot	Description	Est.
205	1902 QV 1s deep brown P 12½ x 11¼. A very fine used Fournier Forgery of Gibbons Type 12 design cancelled with a complete 'NAUSORIPOR / FIJI' cds dated 5 MAR 1902. An unusual forgery.	£25
206	1876-77 1d grey-blue on wove paper. A very fine mint IMPERFORATE PAIR from PRINTERS TRIAL SHEETS. See footnote under SG 33b. SG 28 var.	£80
207	1903 KEVII ½d green & pale-green Watermark Crown 'CA' in an u/m never hinged left-hand marginal block of four with the top left-hand copy showing DIAGONAL LINE FLAW FROM KING'S NECK TO TOP FRAME LINE variety. SG 104,104 var.	£40
208	1935 KGV Silver Jubilee 2d ultramine & grey. A very fine mint copy showing the DIAGONAL LINE BY TURRET variety. Row 10/1 & 10/2 Plate 2A. SG 243f.	£90
209	1935 KGV Silver Jubilee 2d ultramine & grey. A very fine mint copy showing the DOT TO LEFT OF CHAPEL variety. Row 8/3 Plate 2B. SG 243g.	£200
210	1938-55 KGVI 3d blue. A very fine mint example showing the SPUR ON ARMS MEDALLION variety. Row 4/2 Plate 2 of the November 1945 printing. A scarce variety. SG 257a.	£525

NOTE - RESERVES ARE NORMALLY 80%-90% OF THE ESTIMATED PRICES.

FIJI

Lot	Description	Est.
211	1954-59 QEII 1½d sepia in an u/m never hinged SE corner BRADBURY WILKINSON imprint Plate 1 block of ten. SG 282.	£30

GAMBIA

Lot	Description	Est.
212	1889 QV 6d bronze-green. An u/m never hinged copy showing the Row 1/1 SLOPING LABEL variety. SG 33a.	£110
213	1902-05 KEVII set of twelve very fine mint overprinted SPECIMEN. Samuel Type D12. SG 45s-56s.	£185
214	1902-05 KEVII 3s carmine & green/yellow. A very fine mint copy showing the DENTED FRAME variety. Row 1/6 left pane. SG 56a.	£650
215	1904-06 KEVII 2½d bright blue. A very fine mint copy showing the DENTED FRAME variety. Row 1/6 left pane. SG 60b.	£280
216	1905 KEVII 5d grey & black. A very fine mint copy showing the DENTED FRAME variety. Row 1/6 left pane. SG 63a.	£350
217	1909 KEVII 3d purple/yellow. A very fine mint copy showing the DENTED FRAME variety. Row 1/6 left pane. SG 75b.	£200
218	1909 KEVII 5d orange & purple. A very fine mint copy showing the DENTED FRAME variety. Row 1/6 left pane. SG 77a.	£190
219	1909 KEVII 6d dull & bright purple. A very fine mint copy showing the DENTED FRAME variety. Row 1/6 left pane. SG 78a.	£190
220	1912-22 KGV 1d red shade. A fine mint example showing the SPLIT "A" variety. Row 8/3 left pane and only found on printings up to 1918. Scarce. SG 87c.	£145
221	1912-22 KGV 2½d deep bright blue. A very fine mint example showing the SPLIT "A" variety. Row 8/3 left pane on printings up to 1918. SG 90b.	£240
222	1912-22 KGV 4d black & red/yellow. A very fine mint example showing the SPLIT "A" variety. Row 8/3 left pane on printings up to 1918. SG 92d.	£180
223	1912-22 KGV 7½d brown & blue Watermark Multi Crown 'CA'. A very fine mint copy showing the SPLIT "A" variety. Row 8/3 left pane on printings up to 1918. Scarce on this value with only 106 copies possibly existing. SG 95a.	£280
224	1912-22 KGV 10d pale sage-green & carmine. A very fine mint example showing the SPLIT "A" variety. Row 8/3 left pane on printings up to 1918. SG 96b.	£340
225	1935 KGV Silver Jubilee 1½d deep blue & scarlet in an u/m never hinged NW corner pair with the lower copy showing the SHORT EXTRA FLAGSTAFF variety. Row 2/1 Plate 2. Hinged in margin only. SG 143,143b.	£280
226	1935 KGV Silver Jubilee 6d light blue & olive-green in an u/m never hinged NE corner block of four with the lower left-hand copy showing the LIGHTNING CONDUCTOR variety. Row 2/5 Plate 3. Shows Sheet Number "141" in top margin. SG 145,145c.	£250

PLEASE POST YOUR BIDS EARLY - ON A TIED BID THE FIRST ONE RECEIVED WILL WIN.

GIBRALTAR

Lot	Description	Est.
227	1935 (5th April) KGV 2d grey on cream stationery Illustrated Stationery Letter Card very fine used addressed to Plymouth, England. Full letter enclosed written onboard HMS 'Queen Elizabeth' - A dreadnought battleship launched in 1913 and served through both World Wars finally being scrapped in 1948. Scarce. H&G A1.	£120
228	1956 Postage Due 2d sepia in a very fine mint lightly hinged SE corner Plate 1 block of four with both stamps in the right vertical pair showing the Row 9/6 & 10/6 LARGE "d" variety. Upper pair lightly hinged, lower pair including one variety u/m never hinged. SG D2,D2a x2.	£45
229	1889 QV 5c on ½d green in a fine u/m never hinged bottom right-hand pane of sixty (Plate 1) showing the "5" WITH SHORT FOOT variety found on the 1st, 5th and 6th vertical columns. Row 9/1 also shows BROKEN RIGHT VERTICAL FRAME believed to only occur on this pane. Hinged in margin only. SG 15,15a,15 var - Cat £840.	£420
230	1889 QV 25c on 2d brown-purple in an u/m never hinged block of four, the right vertical pair showing the "5" WITH SHORT FOOT from the second vertical row. SG 17,17a.	£30
231	1889 QV 75c on 1s bistre in a fine u/m never hinged NW corner Plate 1 block of twenty eight (4x7). Ex Sir Gawaine Baillie. SG 21.	£1,100
232	1907 KEVII ½d blue-green in an u/m never hinged NW corner Plate 1 block of six. SG 66.	£100
233	1935 KGV Silver Jubilee 6d green & indigo. A very fine mint copy showing the EXTRA FLAGSTAFF variety. Row 9/1 Plate 1. SG 116a.	£200
234	1953-59 QEII "Europa Point" 6d in two of the three listed shades, black & pale blue and black & blue, both copies u/m never hinged. SG 153,153a.	£15
235	1968 QEII 4d multicoloured. An u/m never hinged SW corner block of four with the top right-hand copy showing the error GOLD (STAR) OMITTED. The upper left and lower right copies both show GOLD PARTIALLY OMITTED. Comes with a SE corner Cylinder 1A block of four for comparison. SG 231,231a.	£675

GILBERT & ELLICE ISLANDS

Lot	Description	Est.
236	1940 Postage Due complete set of eight very fine mint perforated SPECIMEN. Samuel Type B9. Certified as genuine. SG D1s-D8s.	£200
237	1912-24 KGV £1 purple & black/red (Die II). A very fine mint lower marginal Plate 11 copy. SG 24.	£450
238	1935 KGV Silver Jubilee 1½d deep blue & scarlet. A very fine used copy showing the FLAGSTAFF ON RIGHT-HAND TURRET variety. Row 7/1 Plate 5. Unpriced used in Gibbons. Scarce. SG 37d.	£325
239	1955 KGVI 3d black & bright blue Perf 12 in an u/m never hinged SW corner Plate 1 block of four. Lightly hinged in margin only. SG 48a.	£15

ALL LOTS ARE OFFERED ON A 'NO QUIBBLE, FULLY REFUNDABLE BASIS.'

GOLD COAST / GHANA

Lot	Description	Est.
240	1965 Postage Due 6p. on 6d bright ultramarine with purple-brown surcharge. An u/m never hinged copy clearly showing the error SURCHARGE DOUBLE variety. Comes with a normal copy for comparison. SG D22b, D22ba.	£28
241	1902 QV 2d dull mauve & orange-red in an u/m never hinged SE corner Plate 3 block of four. SG 27b.	£275
242	1913-21 KGV complete set of twelve very fine mint overprinted SPECIMEN. Samuel Type D12. SG 71s-84s.	£260
243	1924 KGV 1s black/emerald in a very fine mint SW corner Plate 11 block of four. Some perf separation reinforced by stamp hinge. Two copies u/m never hinged. SG 95.	£70
244	1935 KGV Silver Jubilee complete set of four very fine mint perforated SPECIMEN. Samuel Type B9. SG 113s-116s.	£100
245	GHANA - 1957-58 QEII ½d olive-brown & scarlet in an u/m never hinged SE corner BRADBURY WILKINSON Imprint Frame Plate 2a Vignette Plate 1a block of eight. SG 170a.	£12
246	GHANA - 1957-58 QEII 1d deep blue in an u/m never hinged SE corner BRADBURY WILKINSON Imprint Plate 2 block of eight. SG 171.	£10
247	1965 New Currency 6p on 6d multicoloured 'Fire Crowned Bishop' in an u/m never hinged NE corner block of four with Sheet Number showing the SURCHARGE INVERTED variety. SG 385a.	£25
248	1965 New Currency 6p on 6d multicoloured 'Fire Crowned Bishop' in an u/m never hinged SE corner Cylinder block of four showing the SURCHARGE INVERTED variety. SG 385a.	£30
249	1965 New Currency 11p on 11d multicoloured 'Golden Spider Lily' in an u/m never hinged block of six showing the SURCHARGE INVERTED variety. SG 386a.	£60
250	1965 New Currency 12p on 1s multicoloured 'Shell Ginger'. An u/m never hinged copy showing the SURCHARGE INVERTED variety. SG 387da.	£12
251	1965 New Currency 12p on 1s multicoloured 'Shell Ginger' in an u/m never hinged SE corner Cylinder block of four showing the SURCHARGE INVERTED variety. SG 387da.	£60

GREAT BRITAIN

Lot	Description	Est.
252	Box containing presentation packs, FDC's and miniature sheets all in albums from the 1980's to 2000's.	£325
253	Three bags containing a range of Royal Mail presentation packs and loose stamps and FDC's from the 1980's & 1990's plus a small plastic box of mixed coins and a few banknotes.	£200
254	Box containing year books from 1987 through to 2014 (not continuous) plus one album of presentation packs & FDC's.	£375

YOU CAN POST, FAX OR EMAIL YOUR BIDS TO US.

GREAT BRITAIN

Lot	Description	Est.
255	Box containing range of Royal Mail presentation packs & FDC's from the 1980's through to the 2000's.	£425
256	Box containing modern stamp booklets, first day covers and coin covers.	£1,100
257	1935 KGV Silver Jubilee 2s blue on buff stamp booklet (edition 302) complete in fine mint condition. All 1d and 1½d panes with inverted watermark. SG BB16.	£60
258	1935 KGV Silver Jubilee 2s blue on buff stamp booklet (edition 303) complete in very fine mint condition. One pane of 1d and one pane of 1½d with inverted watermark. SG BB16.	£60
259	1935 KGV Silver Jubilee 3s red on buff stamp booklet (edition 294) complete in superb mint condition. All panes ex the 1d with inverted watermark. SG BB28.	£60
260	1935 KGV Silver Jubilee 3s red on buff stamp booklet (edition 296) complete in very fine mint condition. All panes with upright watermark ex one pane of the 1½d. SG BB28.	£40

GRENADA

Lot	Description	Est.
261	1938 KGVI 1½d carmine on yellowish wove paper Stationery Envelope overprinted SPECIMEN very fine unused. H&G B2.	£30
262	1938 KGVI 5c purple on yellow wove paper Stationery Envelope overprinted SPECIMEN superb unused. H&G B3.	£30
263	1951 KGVI 4c red on dark buff stationery Post Card overprinted SPECIMEN very fine unused. H&G 17.	£30
264	1908-11 "Badge of the Colony" 6d dull purple & purple in an u/m never hinged NW corner Plate 1 block of four. SG 85.	£100
265	1934-36 KGV ½d green in a very fine mint vertical COIL JOIN pair. SG 135a.	£25
266	1938-50 KGVI ½d yellow-green perf 12½x13½ in an u/m never hinged vertical COIL JOIN strip of four. SG 153b.	£40
267	1938-50 KGVI 2s black & ultramarine in an u/m never hinged lower marginal WATERLOW & SONS imprint block of four. Hinged in the margin only. SG 161a.	£160
268	1964-66 "Badge of the Colony" 25c black & sepia in an u/m never hinged SE corner Frame Plate 1 Vignette Plate 2 block of four. Lower margin perforated. SG 220.	£22

HONG KONG

Lot	Description	Est.
269	1863 QV 12c pale blue Watermark Crown 'CC' in a very fine mint block of thirty (6x5). Four copies hinged only, twenty six copies u/m never hinged. A scarce block. SG 12a.	£750

YOU CAN POST, FAX OR EMAIL YOUR BIDS TO US.

HONG KONG

Lot	Description	Est.
270	1891 50th Anniversary of Colony QV 2c carmine. A very fine mint copy showing the SHORT 'J' IN 'JUBILEE' variety. Row 1/6. SG 51a.	£575
271	1901 QV 12c blue Watermark Crown 'CA' in a very fine mint left-hand marginal block of eight (4x2). Six copies u/m never hinged. SG 60.	£325
272	1921 KGV 50c black/blue-green (emerald back). A very fine mint copy overprinted SPECIMEN. Samuel Type D12. SG 111ds.	£160
273	1921-37 KGV 30c purple & chrome-yellow in an u/m never hinged block of four showing the WATERMARK INVERTED. A scarce multiple in this condition. SG 127w.	£1,500
274	1935 KGV Silver Jubilee 5c green & indigo. A very fine mint copy showing the SHORT EXTRA FLAGSTAFF variety. Row 2/1 Plate 2. SG 134b.	£325
275	1938-52 KGV 1c to 80c (excluding 25c bright blue & 30c yellowish olive P14½14) in u/m never hinged Plate 1 blocks of four except the the 2c value which is a Plate 2 block. SG 140-154 excluding 149 and 151a.	£475
276	1938-52 KGV 25c bright blue. An u/m never hinged NW corner block of twelve (6x2) with Requisition Number "Z12605" in left-hand margin and also shows a second clear ALBINO IMPRESSION of the Requisition Number. SG 149.	£275
277	1938-52 KGV \$1 dull lilac & blue in an u/m never hinged NW corner block of six four showing Requisition Number "Z07889" in left-hand margin. Usual brownish gum from the 1938 printing. SG 155.	£50
278	1947 KGV \$10 reddish violet & blue in a superb u/m never hinged right-hand marginal block of four showing Requisition Number "M1005" in margin. SG 162b.	£650
279	1948 KGV Silver Wedding 10c violet in an u/m never hinged SE corner Plate 1 block of four. Lower margin perforated. SG 171.	£20
280	1954-62 QEII 30c in the two listed shades, grey and pale grey, both shades u/m never hinged. SG 183,183a.	£10
281	1954-62 QEII 40c in the two listed shades, bright blue and dull blue, both copies u/m never hinged. SG 184,184a.	£17
282	1973 QEII \$10 multicoloured on glazed paper. A superb u/m never copy with BPA Certificate (2023). Scarce. SG 209d.	£1,700

HONG KONG - BRITISH P.O. IN CHINA

Lot	Description	Est.
283	1917-21 KGV 1c brown. A very fine used copy showing the Row 9/2 CROWN BROKEN AT RIGHT variety. SG 1b.	£300
284	1922-27 KGV 25c purple & magenta Wmk Multi Script 'CA'. A very fine mint copy showing the "BROKEN FLOWER" variety. Row 1/3 upper left pane. Ex Stanley Gibbons. SG 25a.	£850

NOTE - THERE IS NO BUYERS PREMIUM OR HANDLING CHARGES.

INDIA

Lot	Description	Est.
285	1959 QEII 5nP green on yellow stationery Post Card overprinted SPECIMEN very fine unused. H&G 75.	£35
286	1950's KGVII 3nP brown on yellow stationery Post Card overprinted SPECIMEN very fine unused. H&G 68.	£35
287	1930 KGV 3a blue Air issue. A fine used copy showing the '1' FOR SECOND 'I' IN 'INDIA' variety. Row 1/12. SG 221b.	£240
288	1976 'NEHRU' 25P dull violet in the three listed Types as per Gibbons, all u/m never hinged. SG 810,810a,810b.	£16

INDIA - CONVENTION STATES - CHAMBA

Lot	Description	Est.
289	1942-47 KGVII 12a lake in an u/m never hinged block of four. SG 119.	£85

INDIA - FEUDATORY STATES - BHOPAL

Lot	Description	Est.
290	1911 Official 4a brown. An u/m never hinged IMPERF PAIR. No gum as issued. SG O308c.	£45

INDIA - FEUDATORY STATES - BIJAWAR

Lot	Description	Est.
291	1935-36 "Maharaja Sarwant Singh" 3p brown. An u/m never hinged IMPERF BLOCK OF FOUR (2 x IMPERF PAIRS). SG 1a (x2).	£25
292	1935-36 "Maharaja Sarwant Singh" 2a deep green in a very fine mint IMPERF HORIZONTAL (VERTICAL PAIR). SG 5b.	£35
293	1936 "Maharaja Sarwant Singh" 6p carmine Roulette 7 in an u/m never hinged COMPLETE PANE of six. Hinged in margin only. SG 7.	£60

INDIA - FEUDATORY STATES - BUNDI

Lot	Description	Est.
294	1941-44 KGVII 3p bright blue in a very fine mint complete sheet of 12. No gum as issued. SG 79.	£35

INDIA - FEUDATORY STATES - INDORE

Lot	Description	Est.
295	1927-37 "Maharaja Yeshwant Rao Holkar II" 4a yellow-brown in a very fine mint lower marginal IMPERF PLATE PROOF PAIR on ungummed paper. SG 26 var.	£40
296	1941 "Maharaja Yeshwant Rao Holkar II" 1a green in an u/m never hinged left-hand marginal block of four. SG 38.	£40

NOTE - RESERVES ARE NORMALLY 80%-90% OF THE ESTIMATED PRICES.

INDIA - FEUDATORY STATES - TRAVANCORE-COCHIN

Lot	Description	Est.
297	1949 4p on 8ca carmine perf 12½. A very fine used copy showing the "S" INVERTED IN "PIES" variety. Row 3/7 right pane. SG 2b.	£40
298	1950 6p on 1a orange in a very fine mint lightly hinged upper marginal block of four. The top left-hand copy shows the Row 1/5 NO STOP AFTER 'T' variety. No gum as issued. SG 10,10a.	£35

IRELAND

Lot	Description	Est.
299	1922 KGV ½d green. A very fine mint lower marginal Control R21 copy. Perf Type 2. Hibernian catalogue TC1. SG 1.	£50
300	1922 KGV 4d grey-green. A very fine mint lower marginal Control S22 Plate 2d copy. Hibernian catalogue TC24. SG 6.	£25
301	1922 KGV 9d agate. A very fine mint lower marginal Control S21 Plate 1f copy. Hibernian catalogue TC28. SG 8.	£30
302	1922 KGV 9d agate. A very fine mint lower marginal Control S22 Plate 2b copy. Perf Type 2A. Hibernian catalogue TC48. SG 8c.	£325
303	1922 KGV 6d reddish purple. A fine mint lower marginal Control T dot 22 Plate X (probably Plate 4) copy. Hibernian catalogue TC60. SG 14.	£40
304	1922 KGV 1½d red-brown. A very fine mint lightly hinged lower marginal Control T22 example. Possibly Plate 35. Perf Type 2A. Hibernian catalogue TC79. SG 32.	£45
305	1922 KGV 2d orange (Die I). A very fine mint lower marginal Control S22 Plate 6 copy. Perf Type 2A. Hibernian catalogue TC81. SG 33.	£60
306	1922 KGV 6d deep reddish purple in a fine mint SW corner Control U dot 22 Plate 6 block of four. Perf Type 2. Two copies u/m never hinged. Left vertical pair with gum bend. Hibernian catalogue TC97. SG 39a.	£65
307	1922 KGV 9d olive-green. A very fine mint lower marginal Control T22 Plate 2b copy. Perf Type 2. Hibernian catalogue TC100. SG 41.	£60
308	1922 KGV 1s bistre-brown in a very fine mint SW corner Control S22 Plate 3 block of six. Perf Type 2A. Three copies u/m never hinged. Hibernian catalogue TC107. SG 43.	£210
309	1922 KGV 1s bistre-brown. A very fine mint lower marginal Control S22 Plate 3 copy. Perf Type 2A. Hibernian catalogue TC107. SG 43	£140
310	1922 KGV 2d orange (Die II). A very fine mint lower marginal Control T22 Plate 5 copy. Perf Type 2A. Hibernian catalogue TC118. SG 50.	£80
311	1922-23 KGV 3d bluish violet in a very fine mint SW corner Control U22 Plate 11 block of six. Perf Type 2A. Three copies u/m never hinged. Hibernian catalogue TC156. SG 57.	£80
312	1922-23 KGV 10d turquoise-blue. A very fine mint lower marginal Control T22 Plate 2b copy. Perf Type 2A. Hibernian catalogue TC171. SG 62.	£60

PLEASE POST YOUR BIDS EARLY - ON A TIED BID THE FIRST ONE RECEIVED WILL WIN.

JAMAICA

Lot	Description	Est.
313	1903-04 1d grey & carmine. A very fine mint pair, one copy showing the Row 4/2 Upper Left Pane "SER.ET" for "SERVIET" variety. SG 34,34a.	£22
314	1952 KGVI 3d green & scarlet in an u/m never hinged SE corner WATERLOW & SONS Imprint Frame Plate 6 Vignette Plate 4 block of eight. SG 126c.	£50
315	1956-58 QEII 3d emerald & red-brown in an u/m never hinged SE corner DE LA RUE Imprint Frame Plate 1C Vignette Plate 1C block of eight. SG 163.	£10
316	1962-63 QEII ½d black & deep orange-red Independence Issue in an u/m never hinged SE corner DE LA RUE Imprint Frame Plate 1B Vignette Plate 7B block of eight. SG 181.	£10
317	1962-63 QEII ½d black & deep orange-red Independence Issue in an u/m never hinged SE corner DE LA RUE Imprint Frame Plate 1C Vignette Plate 7C block of eight. SG 181.	£10
318	1962-63 QEII ½d black & deep orange-red Independence Issue in an u/m never hinged SE corner DE LA RUE Imprint Frame Plate 1C Vignette Plate 5C block of eight. SG 181.	£10
319	1962-63 QEII 1d black & emerald Independence Issue in an u/m never hinged SE corner DE LA RUE Imprint Frame Plate 1A Vignette Plate 5A block of eight. SG 182.	£10
320	1962-63 QEII 2½d black & deep bright blue Independence Issue in an u/m never hinged SE corner DE LA RUE Imprint Frame Plate 1A Vignette Plate 7A block of eight. SG 183.	£10
321	1962-63 QEII 2½d black & deep bright blue Independence Issue in an u/m never hinged SE corner DE LA RUE Imprint Frame Plate 1C Vignette Plate 7C block of eight. SG 183.	£10
322	1963-64 QEII 1d black & emerald block St Edward's Crown watermark Independence Issue in an u/m never hinged SE corner DE LA RUE Imprint Frame Plate 2C Vignette Plate 5C block of eight. SG 206.	£10
323	1964-68 `National Stadium` 1s black & light brown. A superb complete vertical strip of ten with selvedge at the top and bottom, the bottom pair showing the error LIGHT BROWN OMITTED variety. The top error and bottom normal stamps both with cancelled-to-order "Kingston Jamaica AP 12 '65" circular datestamps. These errors were cancelled with the Kingston circular datestamp as a way to authenticate the discovery location and date. The rest including the bottom error copy being u/m never hinged. Only 18 examples recorded. A rare and striking error that only affected the bottom row of the sheet. SG 226,226a x2.	£4,875

KENYA, UGANDA & TANGANYIKA

Lot	Description	Est.
324	1965 Graduated Personal Tax stamps - 4s, 6s, 20s and 50s in u/m never hinged upper marginal blocks of four with MSA 02 Control from Mombassa. Barefoot 1,2,5,8.	£10

ALL LOTS ARE OFFERED ON A 'NO QUIBBLE, FULLY REFUNDABLE BASIS.'

KENYA, UGANDA & TANGANYIKA

Lot	Description	Est.
325	1935 KGV Silver Jubilee complete set of four in superb u/m never hinged left-hand or right-hand marginal blocks of four. SG 124-127.	£45
326	1935 KGV Silver Jubilee 20c light blue & olive-green. A very fine mint lower margin Frame Plate 1 copy showing the DIAGONAL LINE BY TURRET variety. Row 10/1 & 10/2 Plate 2A. SG 124f.	£90
327	1938-54 KGVI 10c black & green in an u/m never hinged block of four, one copy showing the MOUNTAIN RETOUCH variety. Row 6/7 Plate 7B. SG 135,135a.	£60
328	1941 KGVI £1 black & red perf 14 in an u/m never hinged NW corner Plate 1 block of four. Folded horizontally between top and lower pair. SG 150a.	£150

KUWAIT

Lot	Description	Est.
329	1923-24 KGV Official 5r ultramarine & violet. A very fine mint lightly hinged copy clearly showing the OVERPRINT DOUBLE, ONE ALBINO variety. SG O12a.	£150
330	1939 KGVI 1r grey & red-brown. A very fine mint lightly hinged left-hand marginal pair with the right copy showing the EXTENDED "T" in "KUWAIT" variety. Row 3/2 lower left pane. BPA Certificate (1979). SG 47,47a.	£850
331	1948-49 KGVI 5r on 5s red. A very fine mint copy showing the "T" GUIDE MARK IN KING'S HAIR variety. CW 36a. SG 73 var.	£80
332	1950-54 KGVI 2r on 2s6d yellow-green. A very fine mint block of four with the lower right-hand copy showing the EXTRA BAR IN CENTRE variety. Row 7/2 and only on part of the overprinting. Top pair hinged, lower pair including variety u/m never hinged. A scarce variety. SG 90,90a.	£1,175
333	1952 KGVI 10r on 10s ultramarine. A superb unmounted never hinged mint left marginal block of four from the scarce Type II surcharge. This type was only discovered many years after the issue date. A rare block. SG 92a.	£1,125
334	1952-54 QEII 1½a on 1½d green Watermark Tudor Crown in a superb u/m never hinged SW corner Cylinder 6 no dot block of six. Perf Type A. SG 95.	£18
335	1952-54 QEII 2½a on 2½d carmine-red Watermark Tudor Crown in a superb u/m never hinged SW corner Cylinder 9 dot block of six. Perf Type A. SG 97.	£18
336	1952-54 QEII 3a on 3d deep lilac Watermark Tudor Crown in a superb u/m never hinged SW corner Cylinder 3 dot block of six. Perf Type C. SG 98.	£18
337	1952-54 QEII 4a on 4d ultramarine Watermark Tudor Crown in a superb u/m never hinged SW corner Cylinder 1 no dot block of six. Perf Type B. SG 99.	£20
338	1952-54 QEII 6a on 6d reddish purple Watermark Tudor Crown in a superb u/m never hinged SW corner Cylinder 1 no dot block of six. Perf Type A. SG 100.	£24

LABUAN

Lot	Description	Est.
339	1901 Postage Due 12c black & vermilion. A very fine used copy (C.T.O.) showing the OVERPRINT READING DOWNWARDS. Only one sheet issued in error and only known Cancelled to Order. Rare. SG D7a.	£975
340	1880-82 QV 6c orange-brown Watermark Crown 'CC'. A very fine mint copy showing the WATERMARK INVERTED. SG 6w.	£240
341	1883 QV 40c amber in an u/m never hinged sheet of ten. Hinged in margin only. SG 21.	£250
342	1885-86 QV 2c rose-red in a very fine mint sheet of ten. Narrow margins left and right. Only 1000 Sheets printed. Very lightly hinged on three stamps only, rest u/m never hinged. Hinged in margin. SG 30.	£40
343	1902-03 3c black & sepia. A very fine mint copy showing the LINE THROUGH "B" variety. Row 5/10. SG 119a.	£65
344	1902-03 8c black & vermilion P13½-14. A very fine mint copy showing the LINE THROUGH "B" variety. Row 5/10. SG 121b.	£100
345	1902-03 12c black & yellow. A very fine mint lightly hinged copy showing the LINE THROUGH "B" variety. Row 5/10. SG 123c.	£120
346	1902-03 16c green & brown. A very fine mint lightly hinged marginal copy showing the LINE THROUGH "B" variety. Row 5/10. SG 124b.	£90
347	1907 KEVII Straits Settlements \$1 claret & orange perf 13½-14 (SG 151). A fine used copy cancelled by a large part strike of the LABUAN cds for 1907. Couple of short perfs at right but scarce usage.	£80

LEEWARD ISLANDS

Lot	Description	Est.
348	1902 QV 1d on 7d dull mauve & slate. An u/m never hinged block of six (3x2) with the first vertical row showing very FEINT 'ONE' IN SURCHARGE variety. SG 19, 19 var.	£50
349	1905-08 KEVII 3d dull purple & black on chalk-surfaced paper in a superb u/m never hinged block of four. SG 33a.	£260
350	1938-51 KGVI complete set of nineteen in superb u/m never hinged blocks of four. SG 95-114c.	£600
351	1948 KGVI 1d scarlet in an u/m never hinged SW corner block of twenty, one copy showing the "DI" flaw. Row 7/3 left pane on printings from Sept 1947 until corrected on Oct 1948 printings. SG 99,99a.	£200
352	1943-44 KGVI 5s green & red/yellow ordinary paper. A superb u/m never hinged copy showing the BROKEN "E" variety. Row 4/3 left pane. SG 112ba.	£900

NOTE - THERE IS NO BUYERS PREMIUM OR HANDLING CHARGES.

LEEWARD ISLANDS

Lot	Description	Est.
353	1945 KGVI 10s pale green & dull red/green on ordinary paper. A superb used copy on piece tied with a very fine 'BARBUDA' cds dated JY 20 '45. SG 113a.	£375
354	1944 KGVI £1 purple & black/carmine from the February 1942 printing. A superb used copy C.T.O. (cancelled to order) with complete 'ST.KITTS' cds dated 26 FE '44. SG 114a.	£50
355	1945 KGVI £1 brown-purple & black/salmon. A superb u/m never hinged lower marginal Plate 1 copy. SG 114b.	£40
356	1946 KGVI £1 brown-purple & black/salmon. A very fine used copy cancelled with a superb 'ST. JOHNS / ANTIGUA ' double-ring postmark dated MR 28 '46. SG 114b.	£35
357	1951 KGVI £1 violet & black/scarlet Perf 13. A superb used copy cancelled with a very fine 'BASSETERRE / ST.KITTS' cds dated 11 FE '53. SG 114c.	£35
358	1951 KGVI £1 violet & black/scarlet Perf 13. A superb mint very lightly hinged copy showing the WATERMARK INVERTED variety. Only one sheet of sixty issued. KGVI rarity! SG 114cw.	£3,750
359	1954 QEII ½c brown on chalk-surfaced paper in an u/m never hinged NW corner Key and Duty Plate 1 block of six (3x2). Row 2/2 shows the "LOOP" FLAW variety. SG 126,126a.	£12

LONG ISLAND

Lot	Description	Est.
360	1916 1d mauve on thin horizontally laid paper. A very fine mint block of eight with sheet margins either side from Plate 4 showing Positions 5-8 and 9-12 (Row 2 and 3). Block shows partial Papermaker's Watermark "NEN SILVER" through bottom row. Only 440 examples were printed with 129 remainders ultimately destroyed. Gibbs states that only two blocks of eight are known. Scarce multiple. SG 12.	£2,500
361	1916 1s black on thin horizontally laid paper. A very fine mint horizontal strip of four with margins either side from Plate 4 showing Positions 13-16 (Row 4). The strip shows complete Papermaker's Watermark "SILVER LINEN". Only 168 examples were printed with Gibbs recording only 80 unused examples. This is the only strip of four known. Scarce multiple. SG 20.	£1,200
362	1916 1s mauve on thin horizontally laid paper. A very fine mint left-hand marginal block of four from Plate 5 showing Positions 9-10 and 13-14 and shows ALBINO STRIKE OF FRAME variety. Block shows partial Papermaker's Watermark "SILVER". Only 228 examples were printed with Gibbs recording only 100 unused examples and only seven blocks of four are known. Signed Gibbs. SG 22.	£1,200
363	1916 1d black on thin wove paper. A very fine mint example with large margins from Plate 12. Only 72 copies were printed with 24 remainders destroyed. Gibbs records only sixteen unused examples. Scarce. SG 26.	£1,100

NOTE - RESERVES ARE NORMALLY 80%-90% OF THE ESTIMATED PRICES.

MALAYA - KEDAH

Lot	Description	Est.
364	1950-55 'Sultan Badlishah' complete set of twenty-one in u/m never hinged SE corner Plate 1 blocks of four. SG 76-90.	£850
365	1959-62 'Sultan Abdul Halim Shah' \$1 ultramarine & reddish purple in an u/m never hinged SE corner DE LA RUE Imprint Plate 1B block of eight. Hinged in margin only. SG 112.	£50
366	1959-62 'Sultan Abdul Halim Shah' \$2 bronze-green & scarlet in an u/m never hinged SE corner DE LA RUE Imprint Plate 1 block of eight. Hinged in margin only. SG 113.	£120

MALAYA - NEGRI SEMBILAN (SUNGEI UJONG)

Lot	Description	Est.
367	1891-94 'Tiger' 2c orange in an u/m never hinged SW corner Plate 1 block of four. SG 51.	£15

MALAYA - PENANG

Lot	Description	Est.
368	1949-52 KGVI 1c black in an u/m never hinged SE corner Plate 1 block of four. SG 3.	£15
369	1949-52 KGVI 2c orange in an u/m never hinged SE corner Plate 1 block of four. SG 4.	£15
370	1949-52 KGVI 4c brown in an u/m never hinged SE corner Plate 1 block of four. SG 6.	£12
371	1952 KGVI 5c bright purple in an u/m never hinged SE corner Plate 1 block of four. SG 7.	£45
372	1954 KGVI 5c bright magenta shade in a fine u/m never hinged SE corner Plate 1 block of six. Listed in the Commonwealth Catalogue as CW 16a. SG 7 var.	£60
373	1949-52 KGVI 6c grey in a fine u/m never hinged SE corner Plate 1 block of four. Lower margin Imperforate. SG 8	£18
374	1949-52 KGVI 8c scarlet in an u/m never hinged SE corner Plate 1 block of four. SG 9.	£15
375	1949-52 KGVI 10c in contrasting shades, purple, deep purple & red-purple, all u/m never hinged SE corner Plate 1 blocks of four. SG 11.	£45
376	1952 KGVI 12c scarlet in an u/m never hinged SE corner Plate 1 block of four. SG 12.	£45
377	1949-52 KGVI 15c ultramarine in an u/m never hinged NW corner Plate 1 block of four. SG 13.	£25
378	1949-52 KGVI 20c black & green in an u/m never hinged NW corner Plate 1 block of four. SG 14.	£25
379	1952 KGVI 20c bright blue in an u/m never hinged SE corner Head Plate 4 Frame Plate 1 block of four. SG 15.	£45

PLEASE POST YOUR BIDS EARLY - ON A TIED BID THE FIRST ONE RECEIVED WILL WIN.
--

MALAYA - PENANG

Lot	Description	Est.
380	1952 KGVI 35c scarlet & purple in an u/m never hinged NW corner Head Plate 4 Frame Plate 1 block of four. SG 17.	£45
381	1949-52 KGVI 50c black & blue in an u/m never hinged NW corner Head Plate 4 Frame Plate 1 block of four. SG 19.	£45

MALAYA - PERAK

Lot	Description	Est.
382	1886 QV 2c pale rose. A very fine mint copy showing SLIGHT DOUBLING OF OVERPRINT - this is a 'KISS' PRINT' rather than the normal double overprint variety. A good reference item. Brandon Certificate (2022). SG 20 var.	£40
383	1935 "Sultan Iskandar" complete set of fifteen very fine mint perforated SPECIMEN. Samuel Type D19 or D20. Certified as genuine. SG 88s-102s.	£380
384	1938-41 'Sultan Iskandar' 3c green on ordinary paper in an u/m never hinged SE corner Plate 1 block of four. SG 106.	£180
385	1938-41 'Sultan Iskandar' 12c bright ultramarine in an u/m never hinged upper marginal Plate 1 block of four. Hinged in margin only. SG 113.	£130
386	1938-41 'Sultan Iskandar' 30c dull purple & orange on chalk-surfaced paper in an u/m never hinged NW corner Plate 1 block of four. Hinged in margin only. SG 116.	£65
387	1938-41 'Sultan Iskandar' 50c black/emerald on chalk-surfaced paper in an u/m never hinged NW corner Plate 1 block of four. Hinged in margin only. SG 118.	£140
388	1940 'Sultan Iskandar' \$1 black & red/blue in an u/m never hinged SE corner Plate 1 block of four. SG 119.	£550
389	1950-56 'Sultan Yussuf Izzuddin Shah' 10c in the two listed shades, purple & brown purple, both shades u/m never hinged SW corner copies. SG 136,136a.	£19

MALAYA - PERLIS

Lot	Description	Est.
390	1961 'Tiger' 10c deep maroon in an u/m never hinged lower marginal Plate 1A block of four with partial Imprint. SG 35.	£85

MALAYA - POSTAL UNION

Lot	Description	Est.
391	1949 Postage Due 8c yellow-orange in an u/m marginal block of four. SG D10.	£40

MALAYA - SELANGOR

Lot	Description	Est.
392	1894 'Tiger' 3c on 5c rose in an u/m never hinged SW corner Plate 1 block of four. SG 53.	£35

MALAYA - SELANGOR

Lot	Description	Est.
393	1948 KGVI Silver Wedding set of two in u/m never hinged SE corner Plate 1 blocks of four. Hinged in the margin only. SG 88-89.	£110

MALAYA - STRAITS SETTLEMENTS

Lot	Description	Est.
394	1904-10 KEVII 5c dull purple on chalk-surfaced paper in an u/m never hinged SE corner Plate 1 block of six. SG 130a.	£250
395	1918 KGV 1c blue-green. A very fine used block of four showing the WATERMARK INVERTED and cancelled with two Penang postmarks dated 29 OC 1918. A scarce multiple. SG 193bw.	£1,200
396	1922 KGV 1c black overprinted 'MALAYA - BORNEO EXHIBITION'. A very fine mint copy showing the NO HYPHEN variety. Row 7/1 & Row 9/2 left pane. SG 250e.	£40
397	1935 KGV Silver Jubilee complete set of four in u/m never hinged marginal blocks of four. All very lightly hinged in the margin only. SG 256-259.	£60

MALDIVE ISLANDS

Lot	Description	Est.
398	1952 "Palm Tree & Dhow" 2l olive-brown in an u/m never hinged lower marginal BRADBURY WILKINSON imprint Plate 1 block of six. SG 21a.	£90

MALTA

Lot	Description	Est.
399	1872 QV ½d IMPERFORATE PLATE PROOF printed in orange-yellow on glazed wove paper and additionally overprinted 'CANCELLED'. Ex Gibbons. Scarce. SG 7.	£175
400	1863-81 QV ½d buff-brown. A very fine mint pair. Scarce multiple. SG 14.	£225
401	1922-26 5s orange-yellow & bright ultramarine in an u/m never hinged SE corner Plate 1 block of four. SG 137.	£110
402	1926-27 KGV 1d rose-red in an u/m never hinged SE corner Plate 1 block of four. SG 159.	£18
403	1935 KGV Silver Jubilee ½d black & green in an u/m never hinged SW corner block of four with the top left copy showing the EXTRA FLAGSTAFF variety. Row 9/1 Plate 1. Very lightly hinged in the margin only. SG 210,210a.	£22
404	1935 KGV Silver Jubilee 2½d brown & deep blue in an u/m never hinged SW corner block of four with the top left-hand copy showing the EXTRA FLAGSTAFF variety. Row 9/1 Plate 1. Very lightly hinged in margin only. SG 211,211a.	£120

ALL LOTS ARE OFFERED ON A 'NO QUIBBLE, FULLY REFUNDABLE BASIS.'

MALTA

Lot	Description	Est.
405	1938-43 KGVI 'Pictorials' complete set of twenty-one in superb u/m never hinged blocks of four. SG 217-231.	£220
406	1948-53 KGVI 'New Constitution' ½d red-brown in an u/m never hinged SE corner Plate 6 block of six showing the Row 4/10 "NT" JOINED variety. SG 235, 235a.	£15
407	1948-53 KGVI Self-Government 1½d blue-black in an u/m never hinged SE corner block of eight (4x2) with the top left-hand copy showing the BROKEN CROSS variety. Row 5/7 right pane. SG 237,237a.	£135
408	1956-58 QEII 1d black in an u/m never hinged lower marginal BRADBURY WILKINSON Imprint block of four. SG 268.	£10
409	1965-70 QEII 2s multicoloured "Gozo Civic Council". A superb u/m never hinged copy the error GOLD (CENTRE) OMITTED. SG 343a.	£125

MAURITIUS

Lot	Description	Est.
410	1938 KGVI 10c red on buff stationery Post Card superb unused overprinted SPECIMEN. H&G 35.	£30
411	1938 KGVI 20c light blue on white laid paper Stationery Envelope overprinted SPECIMEN very fine unused. H&G B48.	£30
412	1938 KGVI 12c light brown on white stationery Registered Envelope Size G overprinted SPECIMEN very fine unused. H&G C15.	£40
413	1953 KGVI / QEII 5r booklet complete containing stamps from both reigns. Some tone marks on the first two panes but a scarce booklet with only 500 printed many of which must have been used. SG SB1 cat £225.	£150
414	1935 KGV Silver Jubilee complete set of four very fine mint perforated SPECIMEN. Samuel Type D19. SG 245s-248s.	£110
415	1935 KGV Silver Jubilee 12c green & indigo. A fine mint copy showing the DIAGONAL LINE BY TURRET variety. Row 10/1 & 10/2 Plate 2A. Hinge remainder. SG 246f cat £150.	£50
416	1937 KGVI Coronation 20c bright blue. An u/m never hinged example showing the LINE BY SCEPTRE variety. Row 5/3. SG 251b.	£65
417	1945 KGVI 5c pale lilac Perf 14 from the Fourth Printing (March 1943). An u/m never hinged copy showing the SERRATED EDGE variety. Row 10/5 Plate 2 Right Pane. SG 255ba.	£185
418	1950 KGVI 5r red-brown. A superb used copy showing the WATERMARK INVERTED. A KGVI rarity and only recently listed by Gibbons. SG 289w.	£2,500
419	1953-58 QEII "Mauritius Dodo" 60c in the two listed shades, deep green and bronze-green, both copies u/m never hinged. SG 302a,302ab.	£15

MONTSERRAT

Lot	Description	Est.
420	1932 KGV Tercentenary ½d green in an u/m never hinged DE LA RUE Imprint Plate 1 complete sheet thirty. A little perf separation in top margin (centre). SG 84.	£40
421	1932 KGV Tercentenary set of ten very fine mint perforated SPECIMEN. Samuel Type D19. SG 84s-93s.	£200
422	1932 KGV Tercentenary 1½d red-brown in an u/m never hinged DE LA RUE Imprint Plate 1 complete sheet thirty. A little perf separation in top margin. SG 86.	£40
423	1932 KGV Tercentenary 2d grey in an u/m never hinged DE LA RUE Imprint Plate 1 complete sheet thirty with attractive Lathe Work in bottom margin. A little perf separation in top margin. SG 87.	£50
424	1935 KGV Silver Jubilee complete set of four in superb u/m never hinged NW corner blocks of four. SG 94-97.	£50
425	1953-62 QEII ½c deep violet inscribed "PRESIDENCY" in an u/m never hinged SE corner BRADBURY WILKINSON Imprint Plate 1 block of eight. SG 136a.	£10
426	1953-62 QEII ½c deep violet inscribed "PRESIDENCY" in an u/m never hinged SE corner BRADBURY WILKINSON Imprint Plate 1 block of eight. Lower margin guillotined. SG 136a.	£10
427	1953-62 QEII ½c deep violet inscribed "PRESIDENCY" in an u/m never hinged SE corner BRADBURY WILKINSON Imprint Plate 1a block of eight. SG 136a.	£10
428	1953-62 QEII ½c deep violet inscribed "COLONY" in an u/m never hinged SE corner BRADBURY WILKINSON Imprint Plate 1a block of eight. SG 136b.	£16
429	1953-62 QEII ½c deep violet inscribed "COLONY" in an u/m never hinged SE corner BRADBURY WILKINSON Imprint Plate 1 block of eight. SG 136b.	£14

MOROCCO AGENCIES - BRITISH CURRENCY

Lot	Description	Est.
430	1907-13 KEVII 2d pale grey-green & carmine-red in an u/m never hinged block of four. SG 33.	£45
431	1907-13 KEVII 6d dull purple in a very fine mint block of four. Hinged on the top pair only, lower pair u/m never hinged. SG 36a.	£75
432	1914-31 KGV 1d scarlet in a fine mint SE corner Control J17 Plate 'Unknown' block of six. Perf Type 2. The top of 'J' is 1½mm from the base of Jubilee Line and slanting to right. SG 43.	£20
433	1921 KGV 1½d red-brown in a very fine mint SW corner Control O20 Plate 24a block of six. Perf Type 2. SG 44.	£70
434	1914-31 KGV 2d orange (Die I) in a very fine mint SW corner Control R21 Plate 15 block of six. Perf Type 2. Row 19/3 shows DAMAGED 'R' IN 'MOROCCO' variety. SG 45,45 var.	£50

NOTE - THERE IS NO BUYERS PREMIUM OR HANDLING CHARGES.

MOROCCO AGENCIES - BRITISH CURRENCY

Lot	Description	Est.
435	1914-31 KGV 2s6d sepia-brown "Seahorses" from the Waterlow printing. A very fine mint copy overprinted SPECIMEN and also showing the MAJOR RE-ENTRY variety. Row 2/1. A rarity with a maximum of 10 examples existing. SG 50as.	£950
436	1925-36 KGV ½d green in a very fine mint SW corner Control A24 Plate 46 block of six. Perf Type 2. SG 55.	£30
437	1952-55 QEII 2d red-brown in a very fine mint SW corner Cylinder 1 no dot block of six. Perf Type A. SG 104.	£12

MOROCCO AGENCIES - FRENCH CURRENCY

Lot	Description	Est.
438	1917-24 KGV 10c on 1d scarlet Watermark 100 (Simple Cypher) in an u/m never hinged SE corner Control K18 Plate 'Unknown' block of six. Perf Type 2A. SG 193.	£45
439	1917-24 KGV 15c on 1½d red-brown Watermark 100 (Simple Cypher) in a very fine mint SW corner Control U23 Plate 'Unknown' block of six. Perf Type 2A. SG 194.	£38
440	1917-24 KGV 25c on 2½d blue Watermark 100 (Simple Cypher) in a very fine mint SW corner Control V23 Plate 11b block of six. Perf Type 2. SG 195.	£20
441	1917-24 KGV 40c on 4d slate-green Watermark 100 (Simple Cypher) in an u/m never hinged SW corner Control V23 Plate 2b block of six. Perf Type 2. SG 196.	£25
442	1917-24 KGV 50c on 5d yellow-brown Watermark 100 (Simple Cypher) in a very fine mint SW corner Control V23 Plate 4 block of six. Perf Type 2A. SG 197.	£20
443	1917-24 KGV 75c on 9d olive-green Watermark 100 (Simple Cypher) in a very fine mint SW corner Control V23 Plate 2b block of six. Perf Type 2A. SG 198.	£20
444	1925-34 KGV 5c on ½d green Watermark 111 (Block Cypher) in a very fine mint SW corner Control G27 Plate 'Unknown' block of six. Perf Type 2. SG 202.	£18
445	1925-34 KGV 10c on 1d scarlet Watermark 111 (Block Cypher) in an u/m never hinged SW corner Control B24 Plate 10 block of six. Perf Type 2. SG 203.	£22
446	1925-34 KGV 15c on 1½d red-brown Watermark 111 (Block Cypher) in an u/m never hinged SW corner Control A24 Plate 4 block of six. Perf Type 2. SG 204.	£30
447	1925-34 KGV 25c on 2½d blue Watermark 111 (Block Cypher) in a very fine mint SW corner Control E26 Plate 3 block of six. Perf Type 2. SG 205.	£32
448	1925-34 KGV 90c on 9d olive-green Watermark 111 (Block Cypher) in a fine mint SW corner Control X35 Plate 2 block of six. Perf Type 2. SG 209.	£180

NOTE - RESERVES ARE NORMALLY 80%-90% OF THE ESTIMATED PRICES.

MOROCCO AGENCIES - FRENCH CURRENCY

Lot	Description	Est.
449	1925-34 KGV 1f on 10d turquoise-blue Watermark 111 (Block Cypher) in an u/m never hinged SW corner Control A24 Plate 2b block of six. Perf Type 3A. SG 210.	£35
450	1935-37 KGV 25c on 2½d ultramarine in an u/m never hinged SW corner Control Y36 Cylinder 8 no dot block of six. Perf Type 5. Row 18/11 shows the RETOUCHEd PANEL variety. Hinged in margin only. SG 219,219 var.	£45
451	1935-37 KGV 25c on 2½d ultramarine in a very fine used SW corner Control Y36 Cylinder 8 no dot block of six. Perf Type 5. Row 18/11 shows the RETOUCHEd PANEL variety. SG 219,219 var.	£40
452	1935-37 KGV 40c on 4d deep grey-green in an u/m never hinged SW corner Control Y36 Cylinder 11 no dot block of six. Perf Type 5. Very lightly hinged in margin only. SG 220.	£25
453	1935-37 KGV 90c on 9d deep olive-green in an u/m never hinged SW corner Control X35 Cylinder 15 no dot block of six. Perf Type 6. Very lightly hinged in margin only. SG 222.	£30
454	1935-37 KGV 1f.50c on 1s bistre-brown in an u/m never hinged SW corner Control Z36 Cylinder 5 no dot block of six. Perf Type 5. Very lightly hinged in margin only. SG 224.	£30

MOROCCO AGENCIES - GIBRALTAR ISSUES OVPT

Lot	Description	Est.
455	1896 QV 1p bistre. A very fine used copy cancelled by a partial "TANGIER" SG Type A postmark Code 'A'. SG Z149.	£60
456	1898-1900 QV 5c green. A very fine mint copy showing the INVERTED "V" FOR "A" variety. Row 6/6 right-hand pane. SG 1a.	£45
457	1898-1900 QV 10c carmine. A fine used copy showing the INVERTED "V" FOR "A" variety. Row 6/6 right-hand pane. Scarce. SG 2c.	£175
458	1899 QV 10c carmine & 20c olive-green. Both copies very fine mint and showing the HYPHEN BETWEEN "nc" variety. Row 3/5 right-hand pane. SG 10c,11c.	£60
459	1899-1902 QV 20c olive-green. An u/m never hinged pair with the right-hand copy showing the BROAD TOP TO "M" variety. Row 7/3 left-hand pane. SG 11,11b.	£65
460	1899-1902 QV 25c ultramarine in a fine mint NE corner Plate 2 block of four. SG 12.	£50
461	1899-1902 QV 25c ultramarine. A very fine mint pair with the right-hand copy showing the BROAD TOP TO "M" variety. Row 7/3 left-hand pane. SG 12,12b.	£50
462	1899 QV 25c ultramarine. A very fine used copy showing the HYPHEN BETWEEN "nc" variety. Row 3/5 right-hand pane. SG 12c.	£40

MOROCCO AGENCIES - GIBRALTAR ISSUES OVPT

Lot	Description	Est.
463	1903-05 KEVII 5c grey-green & green. A very fine mint pair with the left-hand copy showing the HYPHEN BETWEEN "nc" variety. Row 3/5 right-hand pane. SG 17,17c.	£52
464	1903-05 KEVII 10c dull purple/red. A very fine mint pair with the left-hand copy showing the HYPHEN BETWEEN "nc" variety. Row 3/5 right-hand pane. SG 18,18c.	£52
465	1903-05 KEVII 25c purple & black/blue. A very fine mint right-hand marginal pair with the left-hand copy showing the HYPHEN BETWEEN "NC" variety. Row 3/5 right-hand pane. SG 20,20c.	£50
466	1903-05 KEVII 25c purple & black/blue. A very fine mint pair with the right-hand copy showing the BROAD TOP TO "M" variety. Row 7/3 left-hand pane. SG 20,20b.	£50
467	1905-06 KEVII 10c dull purple/red. A fine mint pair with the right-hand copy showing the BROAD TOP TO "M" variety. Row 7/3 left-hand pane. Short SW Corner perf on non variety stamp. SG 25,25b.	£75

MOROCCO AGENCIES - SPANISH CURRENCY

Lot	Description	Est.
468	1914-25 KGV 5c on ½d green in a very fine mint SW corner Control C13 Plate 9a block of six. Perf Type 2A. SG 129.	£25
469	1914-25 KGV 10c on 1d scarlet in a very fine mint SE corner Control C13 Plate 8b block of six. Perf Type 2. SG 130.	£40
470	1914-25 KGV 10c on 1d scarlet in an u/m never hinged SE corner Control N19 Plate 81 block of six. Perf Type 2. SG 130.	£45
471	1915 KGV 15c on 1½d red-brown. A very fine mint Control C13 Plate 2b 'MADE UP' MINIATURE SHEET of thirty-six. Perf Type 2A. SG 131.	£40
472	1915 KGV 20c on 2d orange (Die I). A very fine mint Control C13 Plate 5a 'MADE UP' MINIATURE SHEET of thirty-six. Perf Type 2A. SG 132.	£40
473	1935 KGV Silver Jubilee complete set of four in u/m never hinged marginal blocks of four. The ½d value is a Control W35 Cylinder 18 dot block. All lightly hinged in the margin only. SG 149-152.	£60
474	1935 KGV Silver Jubilee 10c on 1d scarlet. An u/m never hinged block of nine with the centre copy showing the "CENTIMES" ERROR. Position #18 (Row 5/4). A rare error which occurred on a small second printing made in June 1935 and only distinguishable when in a block with normal stamps. The error was soon discovered and corrected and the number of errors existing is thought to be as few as 25 examples. Slight perf separation at top. SG 150,150a.	£1,300
475	1937 KEVIII 5c on ½d green in a very fine mint SW corner GHOST CONTROL A36 Cylinder 15 no dot block of six. Perf Type 5. SG 160.	£12

ALL LOTS ARE OFFERED ON A 'NO QUIBBLE, FULLY REFUNDABLE BASIS.'

MOROCCO AGENCIES - SPANISH CURRENCY

Lot	Description	Est.
476	1937 KEVIII 10c on 1d scarlet in an u/m never hinged SW corner Control A36 Cylinder 6 no dot block of six. The first & second rows showing Type A (14½mm) & Type B (15¼mm) mixed overprints from the fifth overprinting with untrimmed margins. Perforation Type 5. SG 161,161a x2.	£18
477	1937-52 KGVI 5c-25c in u/m never hinged SW corner Control A37 or B37 Cylinder 2,3 & 22 no dot & 2 dot blocks of six. All Perforation Type 5. SG 165-168.	£60
478	1937-52 KGVI 10c on 1d scarlet in a very fine mint SW corner Control A37 Cylinder 3 no dot block of six. Perforation Type 5. SG 166.	£10
479	1937-52 KGVI 25c on 2½d ultramarine in a very fine mint SW corner Control A37 Cylinder 2 no dot block of six. Perforation Type 5. SG 168.	£16
480	1940 KGVI 'Centenary' 5c on ½d green in an u/m never hinged SW corner Control G40 Cylinder 3 dot block of six. Perf Type 5. SG 172.	£12
481	1940 'Centenary' 10c on 1d scarlet in an u/m never hinged SW corner Control G40 Cylinder 2 dot block of six. Perforation Type 5. SG 173.	£30
482	1940 KGVI 'Centenary' 15c on 1½d red-brown in a very fine mint SW corner Control G40 Cylinder 3 dot block of six. Perf Type 5. SG 174.	£10

MOROCCO AGENCIES - TANGIER ZONE

Lot	Description	Est.
483	1927 KGV ½d green in an u/m never hinged SW corner Control N30 Plate 44 block of four. Perf Type 2. SG 231.	£40
484	1937 KGVI Coronation 1½d maroon in a very fine mint SW corner Control A37 Cylinder 6 no dot block of six. Perf Type 5. Row 19/1 shows the RAY FLAW variety. SG 244,244 var.	£20
485	1937 KGVI ½d green in an u/m never hinged SW corner Control A37 Cylinder 2 dot block of six. Perforation Type 5. SG 245.	£40
486	1937 KGVI ½d green in a very fine mint SW corner Control A37 Cylinder 2 dot block of six. Perforation Type 5. SG 245.	£35
487	1948 KGVI Silver Wedding 2½d ultramarine in an u/m never hinged SW corner Cylinder 1 no dot block of six. SG 255.	£15
488	1953 QEII Coronation complete set of four in very fine mint lightly hinged SW corner Cylinder blocks of six. Very lightly hinged (barely a trace) on one stamp only, otherwise superb u/m never hinged. SG 306-309.	£80
489	1956 QEII 2½d carmine-red in a very fine mint SW corner Cylinder 32 no dot block of six. Perf Type A. SG 318.	£15
490	1956 QEII 3d deep lilac in an u/m never hinged SW corner Cylinder 2 no dot block of six. Perf Type A. SG 319.	£18
491	1956 QEII 4d ultramarine in a very fine mint SW corner Cylinder 1 no dot block of six. Perf Type A. SG 320.	£18

NATAL

Lot	Description	Est.
492	1887-89 QV 2d olive-green Die I. A very fine mint copy overprinted SPECIMEN. Samuel Type D12. SG 106s.	£70
493	1909 KEVII 5s green & red/yellow. A superb used copy cancelled with MUSGRAVE ROAD cds dated 25 JA '09. SG 169.	£40

NAURU

Lot	Description	Est.
494	1916-23 KGV 1d bright scarlet. A superb u/m never hinged copy clearly showing on reverse the OVERPRINT DOUBLE, ONE ALBINO variety. SG 2b.	£250
495	1916-23 KGV 1s bistre-brown. A very fine mint copy overprinted SPECIMEN. Samuel Type GB23. SG 12s.	£110

NEW GUINEA / N.W. PACIFIC IS

Lot	Description	Est.
496	1932 Official 1½d orange-vermilion in a very fine used block of four tied to piece by two "RABAU / NEW GUINEA" postmarks dated 26 AP '32. SG O23.	£60
497	1915-16 "Roo" 1s green in an u/m never hinged vertical strip of three showing the Gibbons 'a, b & c' overprint types. SG 81 var.	£225
498	1925 "Native Village" £1 dull olive-green. An u/m never hinged PANELLI FORGERY. Scarce. SG 136 variety.	£110
499	1932 (24th March) Registered 'IREMONGER' cover to England bearing a 'Bird-of-Paradise' 9d violet (SG 157) cancelled with a violet 'GASMATA' cds dated 24 MR '32 with a further strike to the left and on reverse. Front also has a violet 'GASMATA' handstamped Registration 'label' lower left corner. Backstamped with a black 'RABAU (New Guinea) transit postmark dated 26 AP '32, a Registered Sydney postmark dated 10 MY '32 and a black Registered Adelaide skeleton cds dated 12 MY (no year). 50 days (at least) in transit.	£60

NEW HEBRIDES - FRENCH ISSUES

Lot	Description	Est.
500	1963 'Red Cross Centenary' 15c and 45c multicoloured in u/m never hinged SE corner Plate 1A6 blocks of three with printing date in margin. SG F108-F109.	£50
501	1963 5f blue, deep blue & black in an u/m never hinged SW corner strip of three with date "31.5.66 printed in margin (earliest know use is 24.1.67 so nearly eight months before this value was first used/issued). SG F125.	£60
502	1966 "Inauguration of W.H.O Headquarters" 25c & 60c multicoloured. Both values in an u/m never hinged SE corner Plate 1A or 1B "HARRISON AND SONS" Imprint strip of four. SG F136-F137.	£20

NOTE - THERE IS NO BUYERS PREMIUM OR HANDLING CHARGES.
--

NEW REPUBLIC

Lot	Description	Est.
503	1886-87 2d violet on blue granite paper. A very fine mint block of six dated 2 DEC 86 with FOUR STAMPS EMBOSSED ARMS INVERTED & TWO UPRIGHT ARMS giving TWO TETE-BECHE PAIRS. Rare block. SG 53a x 2 & 53b x2.	£875

NEW ZEALAND

Lot	Description	Est.
504	1936-61 Official 4d black & sepia perf 14. A very fine mint lower marginal Plate 3 block of four. Hinged on top pair only, lower pair u/m never hinged. CP L07c(4) cat \$200. SG O126a.	£80
505	1937 Official 2s olive-green perf 13-14x13½. A very fine mint copy showing the "CAPTAIN COQK" variety. Row 1/4. SG O132a.	£135
506	1940 Official ½d blue-green in an u/m never hinged upper marginal vertical pair with the top copy showing the Row 1/10 "ff" JOINED variety. SG O141, O141a.	£42
507	1940 Official 2d blue-green & chocolate in an u/m never hinged vertical pair with the top copy showing the Row 1/10 "ff" JOINED variety. SG O144, O144a.	£55
508	1940 Official 8d black & red. An u/m never hinged copy showing the Row 1/10 "ff" JOINED variety. SG O149a.	£60
509	1907-11 Official 2d bright reddish purple in a very fine mint block of four. CP EO6b(2). SG O61a.	£50
510	1862-64 QV 6d red-brown. A superb used four margin copy cancelled with distinctive '4 ONEHUNGA A' obliterator - Onehunga was the main port of Manukau Harbour, 8 miles south of Auckland. The earliest known use of this postmark is 10 February 1864. SG 43.	£75
511	1900 "Mount Cook" ½d yellow-green perf 11 in a very fine mint block of four. SG 273.	£50
512	1900 "Mount Cook" ½d deep green perf 11 in an u/m never hinged block of four. SG 273c.	£42
513	1923-25 "Restoration of Penny Postage" 1d carmine on Jones chalk-surfaced paper in an u/m never hinged block of four. SG 461.	£48
514	1935 KGV Silver Jubilee complete set of three all in u/m never hinged lower marginal Plate 1,4 & 5 "BRADBURY WILKINSON" Imprint pairs. ½d Plate 1, 1d Plate 2 and 6d Plate 5. SG 573-575.	£50
515	1936-42 "Mt. Cook" 2½d chocolate & slate Line Perf 14 in an u/m never hinged lower marginal Plate 3 block of four. SG 581b.	£35
516	1936-42 KGV 2s olive-green perf 13-14x13½. A very fine mint example showing the Row 1/4 "CAPTAIN COQK" variety. SG 589a.	£45
517	1938 "Children Playing" 1d + 1d scarlet in an u/m never hinged NW corner Plate H1 block of six. SG 610.	£40

NOTE - RESERVES ARE NORMALLY 80%-90% OF THE ESTIMATED PRICES.

NEW ZEALAND

Lot	Description	Est.
518	1946 'Health Stamp' 2d + 1d chocolate & orange-brown. An u/m never hinged left-hand marginal block of eight with one copy showing the Row 6/1 NO CLOUDS TOP LEFT variety. Listed in CP as T18b(u). SG 679,679 var.	£20
519	1947-52 KGV 5d grey (coarse paper) in a very fine mint SW corner Plate 91 "BRADBURY WILKINSON" Imprint block of six. CP M9b(1)(6). SG 682.	£60
520	1947-52 KGV 9d brown-sepia (fine paper) in a very fine mint SW corner Plate 97 "BRADBURY WILKINSON" Imprint block of six. CP M12a(1)(6). SG 685.	£20
521	1947-52 KGV 1s3d red-brown & blue in an u/m never hinged coil pair machine-printed #6 in black. Frame Plate 1. CW M9. SG 687 var.	£12
522	1947-52 KGV 1s3d red-brown & blue in an u/m never hinged COIL pair machine-printed #10 in black. Frame Plate 1. CW M9. SG 687 var.	£12
523	1955-59 QEII 1d orange in an u/m never hinged SE corner BRADBURY WILKINSON imprint Plate 11 block of six. CP N31a(1)[6]. SG 745.	£15
524	1959 QEII 2d bluish green on cream paper in a very fine mint SE corner BRADBURY WILKINSON imprint Plate 3 (with dot) block of six. CP N33a(1)[6]. One stamp hinged, rest u/m never hinged. SG 747.	£10
525	1959 QEII 4d blue on white opaque paper in an u/m never hinged SE corner BRADBURY WILKINSON imprint Plate 15 block of six. CP N35b(1)[6]. SG 749a.	£28
526	1955-59 QEII 6d purple in an u/m never hinged SE corner BRADBURY WILKINSON imprint Plate 1 block of six. CP N36a(1)[6]. SG 750.	£35

NEW ZEALAND - NIUE

Lot	Description	Est.
527	1935 KGV Silver Jubilee complete set on three First Day Covers. The 1d shows the NARROW "K" IN "KING" variety. The 6d is used on a Registered cover and has Registration Label lower left. SG 69a-71.	£50

NIGERIA

Lot	Description	Est.
528	1914-29 KGV 1d (Die I) Watermark Crown 'CA' in the two listed shades, carmine-red and scarlet, both copies u/m never hinged. SG 2,2a.	£22
529	1935 KGV Silver Jubilee 2d green & indigo. A very fine used copy showing the KITE & VERTICAL LOG variety. Row 10/6 Plate 2A. SG 31k.	£70
530	1935 KGV Silver Jubilee 1s slate & purple. An u/m never hinged complete sheet of sixty from Plate 5. Row 3/1 shows the DIAGONAL LINE FROM RIGHT SIDE OF CURFEW TOWER INTO COLLAR OF ORDER OF THE GARTER and Row 8/3 shows DOT HIGH ABOVE TO RIGHT OF FLAGPOLE, both varieties consistent with Plate 5. Sheet Number "5887" in top margin. SG 33,33 var.	£475

PLEASE POST YOUR BIDS EARLY - ON A TIED BID THE FIRST ONE RECEIVED WILL WIN.

NIGERIA

Lot	Description	Est.
531	1953-58 QEII 2d in the two listed shades, black & yellow-ochre and black & ochre, both in u/m never hinged lower marginal WATERLOW & SONS Imprint blocks of four. SG 72,72a.	£45

NIGERIA - NIGER COAST / OIL RIVERS

Lot	Description	Est.
532	1893 QV ½d on 2½d purple/blue. A very fine mint example of the scarce Old Calabar provisional with SG Type 4 surcharge in green. Ex Dale Lichtenstein. SG 11.	£225
533	1895 QV 1d vermilion. A superb used copy cancelled with a complete 'BAKANA' cds postmark dated JU 28 '95. SG 52a.	£30
534	1895 QV 2½d ultramarine. A very fine used copy cancelled with the scarce 'QUA IBOE RIVER' cds in violet dated DE 10 '95. SG 54.	£40
535	1894 QV ½d on 2½d blue Old Calabar provisional. A very fine used copy cancelled by a partial squared OLD CALABAR postmark in black dated AU 16 '94 code C. Position # 6 from the setting of 8. BPA Certificate (1930). SG 65.	£195

NIGERIA - NORTHERN NIGERIA

Lot	Description	Est.
536	1912 KEVII 5s green & red/yellow. A very fine used copy on piece cancelled with a superb 'ZUNGERU' double-ring postmark dated OC 4 1912. SG 38.	£65

NORTH BORNEO / SABAH

Lot	Description	Est.
537	1909-23 16c 'Rhinoceros Hornbill' (Gibbons Type 60 design) COLOUR TRIAL printed in unissued black & blue in an u/m never hinged complete sheet of nine. Each stamp on the sheet is additionally overprinted "WATERLOW & SONS LTD / SPECIMEN" diagonally in black. No gum as issued. SG 174 var.	£300

NYASALAND / BCA / MALAWI

Lot	Description	Est.
538	1908-11 KEVII 3d purple/yellow. A very fine used copy showing the WATERMARK INVERTED. Scarce. SG 75w.	£325
539	1938-44 KGVII complete set of eighteen mint lightly hinged perforated SPECIMEN. Samuel Types W8, W8a, D20. SG 130s-143s.	£800

OMNIBUS ISSUES

Lot	Description	Est.
540	Box containing six albums issued for the Queen's 2002 Golden Jubilee.	£150

ORANGE FREE STATE

Lot	Description	Est.
541	1877 4d on 6d rose surcharged with Type C. A very fine used copy showing the SURCHARGE INVERTED. SG 12a.	£260
542	1900 "British Occupation" 3d on 3d ultramarine. A very fine mint copy showing SLIGHT TRACES OF ADDITIONAL OVERPRINT. Philatelic Foundation Certificate (1983). SG 106 var.	£20
543	1900 "British Occupation" 6d on 6d ultramarine. A very fine mint copy showing "6" OMITTED variety. Row 7/5. SG 109b.	£65
544	1900 "British Occupation" 1s on 1s brown. A very fine mint copy showing "1" OMITTED variety. Row 4/6. SG 110c.	£110

PAPUA

Lot	Description	Est.
545	1931 (29th July) Registered Airmail Cover posted from Samarai to England, 'Via Brisbane, Perth' bearing three colour franking 'Lakatoi' stamps - a NE corner marginal pair 3d 'AIRMAIL' black & bright blue-green (Cooke Printing - SG 112), 1d grey-black & red (SG 94b) and 4d brown & orange (SG 99), all tied with large 'SAMARAI E D' postmarks dated 29 JY '31 with a further strike on reverse. Front also has a red Samarai Registration label '257' lower right. Backstamped with a Registered Brisbane transit dated 11 AU '31, a Registered Perth transit dated 17 AUG '31 and a oval Registered Liverpool receiver dated 13 SP '31.	£100
546	1916-31 "Lakatoi" 1½d cobalt & light brown. A fine used copy from the Mullett printing showing the Row 1/1 shows the "POSTAGE" variety. SG 95d.	£34
547	1931 "Lakatoi" 2d on 1½d bright blue & bright brown in an u/m never hinged lower marginal JOHN ASH imprint block of ten. SG 122.	£30
548	1936 (13th July) Registered Airmail cover sent from Port Moresby to England (via Australia) bearing three colour franking 'Lakatoi' stamps, ½d black & yellow-green, 9d lilac & violet (SG 127) and 1s3d lilac & pale greenish blue (SG 128), all individually tied with a Port Moresby postmark dated 13 JY '36. Lower left corner has red Port Moresby Registration label. Backstamped with a Port Moresby postmark dated 13 JY '36, a Registered Brisbane postmark dated 22 JY '36 and a Southend-on-Sea receiver cds dated 6 AU '36.	£75
549	1933 (10th October) Registered 'IREMONGER' cover to England bearing a 6d bistre-brown (SG 137) cancelled with a large violet 'BWAGAOIA' cds dated 10 OC '33 with a further strike to the left and on reverse. Front also has a red 'BWAGAOIA' Registration label lower left Number '63'. Backstamped with a Registered Melbourne postmark dated 26 OC '33.	£60

PAPUA & NEW GUINEA

Lot	Description	Est.
550	1958-60 'Klinki Plymill' 7d bronze-green in an u/m never hinged SW corner COMMONWEALTH OF AUSTRALIA Imprint block of four. SG 20.	£15
551	1961-62 'Female Dancer' 1s bronze-green in an u/m never hinged SW corner COMMONWEALTH OF AUSTRALIA Imprint block of four. SG 30.	£10

ALL LOTS ARE OFFERED ON A 'NO QUIBBLE, FULLY REFUNDABLE BASIS.'

RHODESIA / ZIMBABWE

Lot	Description	Est.
552	1905 'Victoria Falls' 1d red P14. A superb used SE corner copy on piece with Sheet Number "49" cancelled with a large complete 'BRITISH ASSOCIATION / SEP 13 1905 / VICTORIA FALLS.' postmark. In August-September 1905, the British Association for the Advancement of Science met in South Africa, only the third time since its inception in 1831. SG 94.	£60

SARAWAK

Lot	Description	Est.
553	1888-97 'Sir Charles Brooke' \$2 green & blue, \$5 green & violet and \$10 green & carmine all superb u/m never hinged. All three values were PREPARED FOR USE BUT NOT ISSUED. BPA Certificate (2020). Scarce. SG 21a,21b,21c.	£2,750
554	1945 \$1 scarlet & sepia overprinted "B.M.A." in an u/m never hinged lower marginal strip of three showing partial BRADBURY WILKINSON imprint in margin. Left-hand stamp with tiny tone spot. SG 140.	£18

SEYCHELLES

Lot	Description	Est.
555	1951 Postage Due 2c scarlet & carmine Watermark Multi Script 'CA' in an u/m never hinged lower marginal BRADBURY WILKINSON Imprint Plate 1 block of twelve. SG D1.	£15
556	1901 QV 3c on 16c chestnut & ultramarine. A very fine mint copy showing the SURCHARGE DOUBLE variety. BPA Certificate (2022). SG 38b.	£400
557	1901 QV 6c on 8c brown-purple & ultramarine. A very fine mint copy showing the SURCHARGE INVERTED variety. BPA Certificate (2022). SG 40a.	£525
558	1902 QV 45c on 2r25c bright mauve & green. A very fine used copy showing the Row 4/1 NARROW "5" variety. SG 45a.	£300
559	1903 KEVII 3c on 15c ultramarine. A very fine used copy showing the DENTED FRAME variety. Row 1/6 left pane. SG 57a.	£250
560	1921-32 KGV 6c carmine. A very fine mint copy showing the WATERMARK INVERTED. Light pencil annotation on reverse. Scarce. SG 104w.	£185
561	1938-49 KGVI 6c greyish green. An u/m never hinged copy showing the WATERMARK INVERTED. A rare KGVI error. SG 137aw.	£1,125
562	1938-49 KGVI 6c green in an u/m never hinged SE corner Plate 1 block of four. SG 137c.	£95
563	1952 KGVI 2c lilac "Sail Fish" in a superb u/m never hinged SE corner Plate 1 block of six. SG 158.	£10
564	1952 KGVI 15c deep yellow-green in a superb u/m never hinged left-hand marginal block of six (3x2) with the top right-hand copy showing the ST. EDWARD'S CROWN WATERMARK ERROR. SG 161,161b.	£250

SEYCHELLES

Lot	Description	Est.
565	1952 KGV 45c purple-brown. A very fine mint copy showing the error CROWN MISSING IN WATERMARK variety. Scarce. BPA Certificate (2022). SG 166a.	£1,125

SIERRA LEONE

Lot	Description	Est.
566	1897 QV 2½d on 6d dull purple & green. An u/m never hinged SE corner Plate 1 horizontal strip of four showing the FOUR SURCHARGE TYPES SE-TENANT. Gibbons Types 8, 10, 11 & 12. Hinged in the margin only. SG 59,60,61,62.	£600
567	1935 KGV Silver Jubilee complete set of four in u/m never hinged marginal blocks of four. Lightly hinged in the margin only. SG 181-184.	£150
568	1935 KGV Silver Jubilee 1d ultramarine & grey-black. A very fine used copy showing the EXTRA FLAGSTAFF variety. Row 9/1 Plate 1. SG 181a.	£90
569	1937 KGV Coronation set of three very fine mint perforated SPECIMEN. Samuel Type B9. SG 185s-187s.	£95
570	1963 QEII 2s6d black & chestnut '2nd Year of Independence' in an u/m never hinged SE corner Plate 1 block of four. SG 265.	£15
571	1964 World's Trade Fair Issue 1d & 5s Postage + 9d & 2s6d Airmail each overprinted with italic "SPECIMEN" in red on the Postage values and black on the Airmail values. These were sent out to Bridger & Kay by Walsall printers at the time to promote this issue and are unlisted. SG 285, 291, 293, 295.	£40

SOLOMON ISLANDS

Lot	Description	Est.
572	1908 "Large Canoe" ½d ultramarine in a very fine used NW corner block of four showing various minor flaws. SG 1.	£40
573	1909 "Large Canoe" 2½d orange-yellow in a superb used block of four and is cancelled with a central single circle "TULAGI / BRITISH SOLOMON ISLANDS" postmark dated AP 28 1909. SG 4.	£140
574	1908 "Large Canoe" 6d chocolate in a very fine used block of four cancelled with four weak strikes of the single circle "BRITISH SOLOMON ISLANDS / GIZO" postmark dated DE 3 1908. Gizo Post Office opened in 1907. SG 6.	£195
575	1908 "Large Canoe" 1s bright purple in a superb used block of four. Each stamp is cancelled with a single circle "TULAGI / BRITISH SOLOMON ISLANDS" postmark dated 17 MR 1908. SG 7.	£250
576	1917 KGV ½d yellow-green in an u/m never hinged SW corner Plate 1 block of nine. SG 23.	£60
577	1956-63 QEII ½d orange & purple in an u/m never hinged SE corner BRADBURY WILKINSON Imprint Plate 1 block of eight. SG 82.	£10

NOTE - THERE IS NO BUYERS PREMIUM OR HANDLING CHARGES.

SOLOMON ISLANDS

Lot	Description	Est.
578	1956-63 QEII 5d black & blue in an u/m never hinged SE corner Plate 1a block of four. SG 88.	£12
579	1956-63 QEII 6d black & turquoise-green in an u/m never hinged SE corner Plate 1 block of four. SG 89.	£12
580	1963-64 QEII 6d black & turquoise in an u/m never hinged SE corner Plate 1 block of four. SG 107.	£12
581	1965 QEII 1s3d black & rose-red 'Orchid' in an u/m never hinged SE corner Plate 1B block of four. SG 121.	£22

SOMALILAND

Lot	Description	Est.
582	1904-05 KEVII Official 1a grey-black & carmine. A very fine mint copy overprinted SPECIMEN and shows the NO STOP AFTER "M" variety. A rarity with only 3 or 4 copies possible. SG O11as.	£450
583	1903 KEVII 2a violet SERVICE stamp. A very fine mint copy showing the MISSING SECOND "I" in "BRITISH" variety. Row 7/12 upper pane. SG O8a.	£110
584	1903 QV 2a pale violet in an u/m never hinged left-hand marginal block of fifteen with the fourth stamp on the lower row showing "BRITISH" variety. Row 6/4 upper pane. SG 3,3b.	£400
585	1903 QV 6a olive-bistre in a very fine mint pair with the right-hand copy showing the "SOMAL.LAND" overprint variety. Row 7/5 lower pane. SG 19,19b.	£175
586	1903 KEVII ½a green. A very fine mint horizontal pair with the right-hand copy showing the "SOMAL.LAND" overprint variety. Rows 6/7 & 7/5 lower left pane. SG 25,25d.	£60
587	1903 KEVII ½a green. A very fine mint copy showing the "SOMAL.LAND" overprint variety. Rows 6/7 & 7/5 lower left pane. SG 25d.	£55
588	1903 KEVII 1a carmine. A very fine mint lightly hinged copy showing the "SOMAL.LAND" error. Row 6/7 and 7/5 lower left pane. SG 26d.	£45
589	1911 KEVII 3a orange-brown. A very fine mint horizontal pair with the right-hand copy showing "BRITISH" variety. Row 6/4 upper pane. SG 28,28a.	£200
590	1912-19 KGV ½a green. An u/m never hinged copy with the WATERMARK INVERTED. SG 60w.	£16
591	1935 KGV Silver Jubilee 1r slate & purple. A very fine used copy showing the KITE & HORIZONTAL LOG variety. Row 10/6 Plate 2B. SG 89l.	£260
592	1938 KGV complete set of twelve all u/m never hinged perforated SPECIMEN. Samuel Type W8a. Certified as genuine. SG 93s-104s.	£275

SOUTH AFRICA

Lot	Description	Est.
593	1967-71 Postage Due 4c deep myrtle-green & emerald Type D6 Watermark 127. An u/m never hinged example. A scarce Postage Due. PFSA Certificate (1990). SG D62c.	£300

SOUTH AFRICA

Lot	Description	Est.
594	1931 Official 1s brown & deep blue in a very fine mint SW corner BRADBURY WILKINSON Imprint block (four pairs) with the corner copy showing STOP AFTER "OFFICIAL" variety. Row 10/1. The bottom two pairs including the variety u/m never hinged. SG O10,O10a.	£225
595	1944-50 Official 1½d blue-green & yellow buff overprinted with Type O2 (reading downwards with 'OFFICIAL' at right). A very fine mint lightly hinged block (two pairs) - lower pair u/m never hinged - with all four stamps all showing DIAERESIS OVER SECOND "E" IN 'OFFISEEL' variety - overprinted using the first Forme. The top left stamp also shows RAISED "OFFICIAL" variety and the lower right-hand copy also shows LONG "OFFICIAL" variety. A scarce block as the majority of these stamps were overprinted with the second Forme (the latter having no diaeresis at all). See footnote in Gibbons under SG O35. SG O33a x2.	£1,000
596	1913-24 KGV 10s deep blue & olive-green. A very fine used copy with the WATERMARK INVERTED. Rare! SG 16w.	£1,500
597	1930-45 'Black & blue Wildebeest' 1s brown & deep blue. A very fine used bilingual pair showing the TWISTED HORN variety and WATERMARK INVERTED. Row 1/5 Cylinder dot 7020. SG 48cw.	£240
598	1937 KGV1 Coronation 1s red-brown & turquoise-blue. A superb u/m never hinged upper marginal block (two bilingual pairs) with the lower left-hand copy showing the HYPHEN ON AFRIKAANS STAMP OMITTED variety. Row 2/13. SG 75,75a.	£60
599	1949 UPU 3d bright blue in an u/m never hinged NW corner block of four (two bilingual pairs), one copy showing the SERIF ON "C" variety. Row 1/1. SG 130,130a.	£40
600	1949 UPU 3d bright blue. A very fine used bilingual pair with one copy showing the SERIF ON "C" variety. Row 1/1. UNPRICED USED in Gibbons. SG 130a.	£42

SOUTH WEST AFRICA / NAMIBIA

Lot	Description	Est.
601	1923 Postage Due 6d black & slate in a very fine mint right-hand marginal block of four with the top right-hand copy showing "WES" FOR "WEST" variety. Row 8/6. Lower left copy u/m never hinged. SG D5, D5a.	£300
602	1951-52 Official 6d blue & brown. An u/m never hinged right-hand marginal block of four (2 pairs) with the lower pair showing the OVERPRINTS TRANSPOSED. SG O27,O27a.	£24
603	1943-44 'War Effort' 1s brown. An u/m never hinged marginal bilingual pair, the top copy showing the "BURSTING SHELL" flaw. Cylinder 46 Row 11/20. Hinged in margin only. SG 130b.	£170
604	1947 KGV1 Royal Visit 3d blue in a u/m never hinged SW corner block of eight (four pairs), Row 19/2 shows the "BLACK-EYED PRINCESS" variety. CW S40a. SG 136,136a.	£12

NOTE - RESERVES ARE NORMALLY 80%-90% OF THE ESTIMATED PRICES.

SOUTH WEST AFRICA / NAMIBIA

Lot	Description	Est.
605	1949 UPU set of three very fine used on illustrated FIRST DAY COVER sent Registered to New Zealand with each pair cancelled by a "WINDHOEK" postmark dated 1 X '49. Front shows a straight-line "WINDHOEK" Registration handstamp lower left in violet with manuscript Registration Number in red crayon below. Reverse backstamped with a 'Registered Perth / West Australia' receiver postmark dated 24 NOV '49. Almost two months in transit! SG 138-140.	£15

ST HELENA

Lot	Description	Est.
606	1922-37 KGV 5s grey & green/yellow "Badge" issue. A very fine mint example showing the Row 4/6 TORN FLAG variety. SG 95b.	£725
607	1922-37 KGV ½d grey & black "Badge" issue in a very fine mint lower marginal block of four with the top right-hand copy showing the Row 4/6 TORN FLAG variety. SG 97,97b.	£200
608	1936 KGV ½d grey-black & black shade "Badge" issue. An u/m never hinged SW corner pair copy from the 1936 Printing showing the Row 5/1 CLEFT ROCK variety. Only the top part of Plate Slug showing. Hinged in margin only. SG 97h,97hc.	£240
609	1922-1937 KGV 1d grey & green "Badge" issue. A very fine mint copy showing the Row 5/1 CLEFT ROCK variety. SG 98c.	£56
610	1922-37 KGV 8d grey & bright violet "Badge" issue. A fine used example showing the Row 5/1 CLEFT ROCK variety. Few short perfs at left. SG 105c cat £450.	£160
611	1927 KGV 5s grey & green/yellow "Badge" issue. A very fine mint lightly hinged SW corner copy showing the Row 5/1 CLEFT ROCK variety. SG 110c.	£560
612	1935 KGV Silver Jubilee 1½d deep blue & carmine. An u/m never hinged lower marginal copy showing the DIAGONAL LINE BY TURRET variety. Row 10/1 & 10/2 Plate 2A. SG 124f.	£80
613	1979 QEII 20p multicoloured. A superb u/m never hinged copy showing the WATERMARK CROWN TO RIGHT OF 'CA'. SG 353w.	£12
614	1979 QEII 32p multicoloured. A superb u/m never hinged copy showing the WATERMARK CROWN TO RIGHT OF 'CA'. SG 354w.	£14

ST KITTS-NEVIS

Lot	Description	Est.
615	1938-50 KGVI 5s bluish green & scarlet. A very fine mint very lightly hinged copy showing the BREAK IN OVAL AT LEFT variety. Row 7/1 and only found on printings between 1941 and 1945. SG 77bd.	£175
616	1946 KGVI Victory set of two very fine mint perforated SPECIMEN. Samuel Type D21. SG 78s-79s.	£60

PLEASE POST YOUR BIDS EARLY - ON A TIED BID THE FIRST ONE RECEIVED WILL WIN.
--

ST KITTS-NEVIS

Lot	Description	Est.
617	1954-63 QEII ½c deep olive in an u/m never hinged SE corner WATERLOW & SONS Imprint Plate 1 block of eight. SG 106a.	£10
618	1954-63 QEII 1c deep green & orange-ochre in an u/m never hinged SE corner DE LA RUE Imprint Plate 1 block of six. SG 107a.	£15
619	1954-63 QEII 2c green in an u/m never hinged SE corner Plate 1 block of four. SG 108.	£10
620	1954-63 QEII 2c green in an u/m never hinged SE corner WATERLOW & SONS Imprint Plate 1 block of eight. SG 108.	£15

ST KITTS-NEVIS - ST CHRISTOPHER

Lot	Description	Est.
621	1870-79 QV 4d blue. A very fine used example with WATERMARK INVERTED. SG 8w.	£48

ST LUCIA

Lot	Description	Est.
622	1943 KGVI ½d green perf 12½ in an u/m never hinged vertical COIL JOIN strip of four. SG 128a.	£15
623	1953-63 QEII 5c in the two listed shades, violet and slate violet, both shades in u/m never hinged blocks of four. SG 176,176a.	£80

ST VINCENT

Lot	Description	Est.
624	1938 KGVI 3d violet on cream stationery Registered Envelope Size G overprinted SPECIMEN very fine unused. H&G C6.	£40
625	1938-47 / 1949-52 KGVI lot of mainly Imprint pairs and blocks (plus one Plate pair) all mainly mounted mint except for the ½d to 3½d values which are u/m never hinged. SG 149, 150, 153a, 154a, 156, 164, 164a, 167, 167a, 168, 169, 169a, 170a.	£50
626	1938-47 KGVI "Pictorials" complete set of fifteen very fine mint perforated SPECIMEN. Samuel Type B9. Certified as genuine. SG 149s-159s.	£260
627	1955 QEII \$2.50 in the two listed shades, deep blue and indigo blue, both u/m never hinged blocks of four. SG 200,200a.	£200

SUDAN

Lot	Description	Est.
628	1936-46 Official 1m black & orange in a very fine used block of four with all copies showing the OVERPRINT DOUBLE variety. Each stamp with Charles Hass handstamp on reverse. A rare multiple. SG O32a.	£675

ALL LOTS ARE OFFERED ON A 'NO QUIBBLE, FULLY REFUNDABLE BASIS.'

SUDAN

Lot	Description	Est.
629	1936-46 Official 5p chestnut & green on chalky paper in an u/m never hinged lower marginal block of four. SG O40.	£50
630	1948 Official complete set of sixteen in u/m never hinged / very fine mint SE corner Plate 1 strips of four. The 1m-15m values are hinged once in the margin only and the 2p-50p values are hinged on one stamp and margin only, rest u/m never hinged. SG O43-O58.	£475
631	1948 Official 2m orange & chocolate in an u/m never hinged upper marginal Frame Plate 1 Vignette Plate 1 block of four. SG O44.	£12
632	1948 Official 10m rose-red & black. An u/m never hinged example showing the Row 2/3 "NUN" FLAW variety. O48a.	£18
633	1921-23 'Camel' complete u/m never hinged set of seven. All values are marginal Plate 1 copies. SG 30-36.	£45
634	1941 'Camel' 4m green & chocolate on ordinary paper. A very fine mint copy with INVERTED WATERMARK. SG 40aw.	£60
635	1950 'Air' complete set of eight in u/m never hinged blocks of ten from the bottom two rows of the sheet neatly written up across three album pages. Hinged in the margins only (to album page) and the right pair (all blocks) are folded under in order to neatly fit on the pages. Ex William Frazer Collection. SG 115-122.	£300
636	1951-61 "Weaving" 4p in the two listed shades, ultramarine & black and deep blue & black, both shades in superb u/m never hinged corner Frame Plate 1 Vignette Plate 1 blocks of four. SG 133,133a.	£80
637	1951-61 "Saluka Farming" 5p in two contrasting shades, orange-brown & yellow-green and pale orange-brown & pale yellow-green, both shades in superb u/m never hinged corner Frame Plate 1 Vignette Plate 1 blocks of four. SG 134,134 var.	£40
638	1951-61 "Weaving" 6p in the two listed shades, blue & black and deep blue & black, both shades in superb u/m never hinged NE corner Frame Plate 1 Vignette Plate 1 blocks of four. SG 135,135a.	£110
639	1951-61 "Darfur Chief" 8p in the two listed shades, blue & brown and deep blue & brown, both shades in superb u/m never hinged corner Frame Plate 1 Vignette Plate 1 blocks of four. SG 136,136a.	£130
640	1951-61 "Stack Laboratory" 10p in two contrasting shades, black & green and black & pale green, both shades in superb u/m never hinged corner Frame Plate 1 Vignette Plate 1 blocks of four. SG 137,137 var.	£25
641	1951-61 "Nile Lechwe" 20p in two contrasting shades, blue-green & black and deep green & black, both shades in superb u/m never hinged corner Frame Plate 1 Vignette Plate 1 blocks of four. SG 138,138 var.	£100
642	1951-61 "Camel Postman" 50p in two contrasting shades, carmine & black and pale carmine & black, both shades in superb u/m never hinged corner Frame Plate 1 Vignette Plate 1 blocks of four. SG 139,139 var.	£180

SWAZILAND / ESWATINI

Lot	Description	Est.
643	1932 KGV 4d red on cream stationery Registered Envelope Size G overprinted SPECIMEN very fine unused. H&G C1.	£45
644	1938 KGVI 4d dark red on cream stationery Registered Envelope Size G overprinted SPECIMEN very fine unused. H&G C2.	£45
645	1935 KGV Silver Jubilee 1d deep blue & scarlet. An u/m never hinged complete sheet of sixty from Plate 10. Row 8/2 shows CLOSE PARALLEL LINES HIGH ABOVE & TO RIGHT-HAND SPIRE OF ST. GEORGE'S CHAPEL and Row 9/1 shows HAIRLINE MARK VERY CLOSE TO LEFT FRAME BORDER ARISING FROM HOME PARK, both varieties consistent with Plate 10. SG 21,21 var.	£25
646	1935 KGV Silver Jubilee complete set of four in very fine mint SW corner blocks of four all showing the EXTRA FLAGSTAFF variety. Row 9/1 Plate 1. Most of the stamps including all the varieties u/m never hinged. SG 21-24,21a-24a.	£525
647	1935 KGV Silver Jubilee complete set of four in u/m never hinged marginal blocks of four. Lightly hinged in the margin only. SG 21-24.	£40
648	1935 KGV Silver Jubilee 3d brown & deep blue. A very fine mint copy showing the EXTRA FLAGSTAFF variety. Row 9/1 Plate 1. SG 23a.	£80
649	1935 KGV Silver Jubilee 6d slate & purple. An u/m never hinged complete sheet of sixty with one copy showing the SHORT EXTRA FLAGSTAFF variety. Row 2/1 Plate 2. SG 24,24b.	£350
650	1938-54 KGVI 6d deep magenta perf 13½x13 in a very fine mint lower marginal DE LA RUE imprint strip of four. Hinged on one stamp only, rest u/m never hinged. SG 34.	£95
651	1961 QEII ½c on ½d black & orange Perf 13x13½. A superb u/m never hinged example showing the error SURCHARGE INVERTED variety. RPSL Certificate (2019). SG 65a.	£1,450
652	1961 QEII 1c on 1d black & emerald. An u/m never hinged right-hand marginal vertical pair (from positions 35 & 40) both showing the error SURCHARGE DOUBLE variety. Only one sheet discovered. Ex Stanley Gibbons. BPA Certificate (2017). Rare. SG 66a x2.	£3,600
653	1961 QEII 2r on £1 black & turquoise-blue. A superb u/m never hinged SW corner block of four showing the scarce Type II surcharge with the value at the bottom. SG 77b.	£450

TANGANYIKA / GERMAN E.A.

Lot	Description	Est.
654	1927-31 KGV 1s to £1 "Keyplate" (the top six values in the set) all very fine mint. Two short 'sets' of six, one 'set' from the First Printing and the other from the Second Printing showing a lovely range of shades when placed side by side. Twelve stamps in total - IE: two stamps each of the top six values. SG 102-107.	£750
655	1961-64 'Pictorials' complete set in superb u/m never hinged SE corner Cylinder 1A or 1B blocks of four. SG 108-119.	£100

NOTE - THERE IS NO BUYERS PREMIUM OR HANDLING CHARGES.
--

TOGO

Lot	Description	Est.
656	1915 KGV ½d green in an u/m never hinged left-hand marginal block of twelve (6x2) - Stamps 25-36. The top left-hand copy shows the SMALL "F" IN "FRENCH" variety (Position #25) and one stamp on the lower row shows the "CUPATION" FOR "OCCUPATION" variety (Position #33). SG H34,H34a, H34e.	£115
657	1915 KGV ½d green. An u/m never hinged copy showing the "CCUPATION" FOR "OCCUPATION" variety (stamp #57). SG H34f.	£65
658	1915 KGV 1d red. A very fine mint copy showing the "CCUPATION" FOR "OCCUPATION" variety (stamp #57). SG H35f.	£180
659	1915 KGV 2½d bright blue. A very fine mint copy showing the "CCUPATION" FOR "OCCUPATION" variety (stamp #57). SG H37f.	£150
660	1915 KGV 1s black/green. A very fine mint copy showing the "CCUPATION" FOR "OCCUPATION" ERROR variety. Stamp # 57. This variety was noticed by postal officials at the time and many copies were cut from sheets and destroyed. Usual clipped perfs at top where cut from sheet. Very scarce - it was stated in 1921 that only 82 copies of the variety existed. SG H41f.	£160

TONGA

Lot	Description	Est.
661	1892 6d red on white wove paper with linin inside & pointed flap stationery Registered Envelope Size G very fine unused. H&G C3.	£45
662	1894 'King George I' ½d on 1s brown. A very fine mint pair with the right-hand copy showing the "SURCHARCE" variety. SG 22,22a.	£10
663	1897 'King George II' 2½d black & blue. A fine used copy with WATERMARK SIDEWAYS showing the NO FRACTION BAR IN "½" variety. Row 2/10. SG 43ba.	£42
664	1951 "50th Anniversary Treaty of Friedship" complete set of six in superb u/m never hinged SE corner Plate 1 blocks of four. SG 95-100.	£60

TRANSJORDAN / JORDAN

Lot	Description	Est.
665	1925 Postage Due 13m ultramarine in an u/m never hinged left marginal block of four. SG D163.	£30
666	1942 Postage Due set of three in very fine mint blocks of four. Mounted on the top pair only, lower pair u/m never hinged. SG D230-D232.	£80
667	1920 1m sepia Perf 14. A very fine mint copy showing the OVERPRINT INVERTED. Holcombe Certificate (1988). Scarce - four sheets were discovered in Jan 1921 but most were destroyed. Ex Gibbons. SG 9a.	£190
668	1924 'Visit of King Hussein' 1½p lilac with gold overprint in a very fine mint marginal block of four showing DOUBLE ROW OF PERFORATIONS on lower pair. SG 119d var.	£20
669	1924 ¼p green. A fine mint pair, one copy showing the "1242" ARABIC DATE ERROR. SG 126,126e.	£18

NOTE - RESERVES ARE NORMALLY 80%-90% OF THE ESTIMATED PRICES.

TRANSJORDAN / JORDAN

Lot	Description	Est.
670	1924 ¼p green. An u/m never hinged copy showing the INVERTED OVERPRINT variety. Scarce. SG 126b.	£60
671	1924 1½p lilac. An u/m never hinged horizontal pair, one copy showing the "1343" DATE ERROR. Row 4/2. SG 130,130a.	£45
672	1925 ½p carmine. A very fine mint right marginal IMPERF copy. Ex Ledger. SG 137 var.	£20
673	1925 2p blue. An u/m never hinged NE corner IMPERF copy. Hinged in margin only. Ex Ledger. SG 140 var.	£20

TRANSVAAL

Lot	Description	Est.
674	1902 KEVII 4d black & brown. A very fine mint copy overprinted SPECIMEN showing the broken "M" in "SPECIMEN variety. Samuel Type D12 - listed in Samuel's book p43. Position 41 in the setting. Only 6 or 7 examples can possibly exist. Scarce. SG 249s var.	£120

TRINIDAD & TOBAGO

Lot	Description	Est.
675	1937 KGVI 1c green on white stationery Post Card overprinted SPECIMEN very fine unused. H&G 4.	£45
676	1937 KGVI 6c blue on creamy white stationery Registered Envelope Size G overprinted SPECIMEN very fine unused. H&G C5.	£40
677	1955 Postage Due 10c black on Chalk-surfaced paper in an u/m never hinged SW corner Pate 1 block of six. SG D30a.	£60
678	1955 Postage Due 10c black on Chalk-surfaced paper in an u/m never hinged SE corner Pate 1 block of six. SG D30a.	£60

TRISTAN DA CUNHA

Lot	Description	Est.
679	1965-67 QEII ½d black & ultramarine in an u/m never hinged SE corner BRADBURY WILKINSON Imprint Plate 1a block of eight. SG 71.	£10
680	1965-67 QEII 10s deep blue & carmine in an u/m never hinged SE corner Plate 1 block of four. SG 84.	£12
681	1965-67 QEII 10s deep blue & carmine in an u/m never hinged SE corner Plate 1a block of four. SG 84.	£12
682	1985 QEII 10p multicoloured 'Queen Mother & Prince Charles' in an u/m never hinged SE corner Cylinder 1D block of four showing the WATERMARK INVERTED. SG 390w.	£20
683	1988 QEII 15p multicoloured. A superb u/m never hinged copy showing the WATERMARK CROWN TO RIGHT OF 'CA'. SG 449w.	£26

TURKS & CAICOS ISLANDS

Lot	Description	Est.
684	1935 KGV Silver Jubilee complete set of four in superb u/m never hinged blocks of four. SG 187-190.	£50
685	1938-45 KGV complete set all very fine used including all listed shades. Eighteen stamps in total. SG 194-205.	£85
686	1948 KGV Silver Wedding set in superb u/m never hinged marginal blocks of four. SG 208-209.	£48
687	1948 KGV Centenary ½d blue-green in an u/m never hinged SE corner Plate 1 block of four. SG 210.	£10
688	1949 UPU set of four very fine used on illustrated FIRST DAY COVER to England cancelled with two "GRAND TURK" postmarks dated 10 OC '49. SG 217-220.	£20
689	1950 KGV 4d black & rose 'Map' in an u/m never hinged lower marginal WATERLOW & SONS Imprint block of four. SG 227.	£15
690	1950 KGV 6d black & blue 'Grand Turk Light' in an u/m never hinged lower marginal WATERLOW & SONS Imprint block of four. SG 228.	£12

UGANDA

Lot	Description	Est.
691	1895 10(c), 15(c) and 20(c) black (Narrow stamp with Narrow letters) type-written on thin laid paper in an u/m never hinged vertical SE-TENANT strip with no gum as issued. Very scarce. Ex Samos Collection. SG 27,28,29.	£4,750
692	1896 1a black. An u/m never hinged copy showing the THIN "1" variety. No gum as issued. SG 54 var.	£95
693	1902 QV 2½a deep blue. Two very fine used copies on piece each neatly tied by "BUDDU" cds dated NO 23 '02. SG 93.	£20

ZANZIBAR

Lot	Description	Est.
694	1926-30 Postage Due 20c black/orange. A very fine mint copy showing the "CENT.S" for "CENTS" variety. SG D11a.	£40
695	1895-96 QV 2½ on 1a6p sepia. A very fine used copy on piece showing the "ZANIZBAR" ERROR variety. Row 1/9. BPA Certificate (2000). Scarce. SG 22k.	£1,425
696	1895-98 QV 2½ on 2a pale blue. A very fine mint copy showing the INVERTED "1" in "½" variety. Light pencil notation on reverse. Scarce. SG 26j.	£350
697	1944 "Sultan's Dhow" complete set of four in u/m never hinged SE corner Plate 1 blocks of four. SG 327-330.	£25
698	1949 KGV Silver Wedding set in u/m never hinged SE corner Plate 1 pairs. SG 333-334.	£55
699	1952-55 "Sultan Khalifa" and "Seyyid Khalifa Schools" complete set including all listed shades all very fine used. Eighteen stamps in total. SG 339-352.	£60

ALL LOTS ARE OFFERED ON A 'NO QUIBBLE, FULLY REFUNDABLE BASIS.'



210



287



278



284



352



238



399



235



474



418



615



552



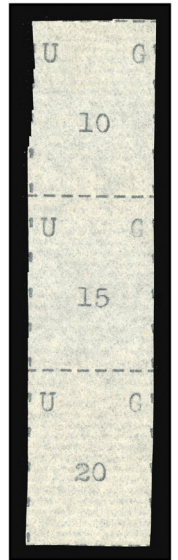
Ex 539



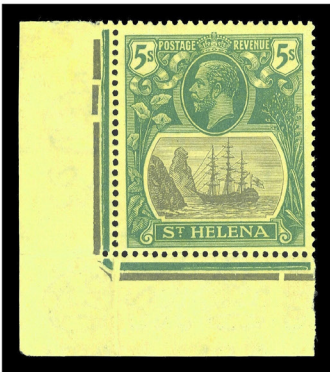
651



344



691



611



556



593



600



652



695